

Benchmark: Chiseled box on Northeast corner of Northeast Wingwall over Little Calumet River
 Bridge Westbound I-80 mile marker 0.4. Elevation = 191.662
 Existing Structure: Remove Existing Mechanically Stabilized Earth Wall
 All dimensions in millimeters (mm) except as noted.

ROUTE NO.	SECTION	COUNTY	SHEETS	SHEET	SHEET NO. S-1
180/94	2626.2-R-2	LAKE COUNTY, INDIANA	1207	1018	25 SHEETS

CONTRACT NO. 62114 INDOT DES. NO. 0100987

LOADING

Wind Load on Future Noise Wall = 1.7 kPa

DESIGN STRESSES

FIELD UNITS

$f'_c = 24 \text{ MPa}$
 $f_y = 400 \text{ MPa (Reinf.)}$
 Maximum Applied Soil Bearing Pressure = 160 kPa

DESIGN SPECIFICATIONS

AASHTO 2002 Standard Specifications for Highway Bridges

AASHTO 1989 Guide Specifications for Structural Design of Sound Barriers and 1992 Interims

APPROVED
 FOR STRUCTURAL ADEQUACY ONLY

Ralph E. Anderson
 ENGINEER OF BRIDGES AND STRUCTURES

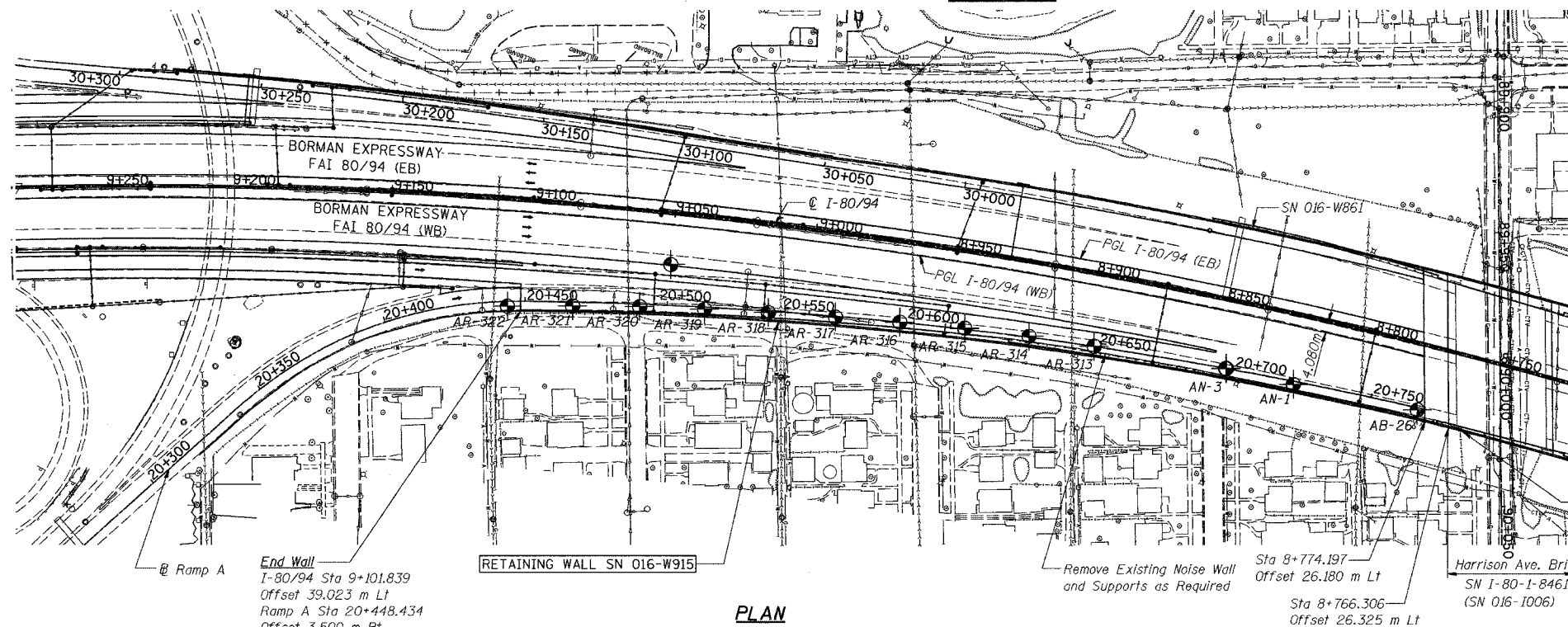
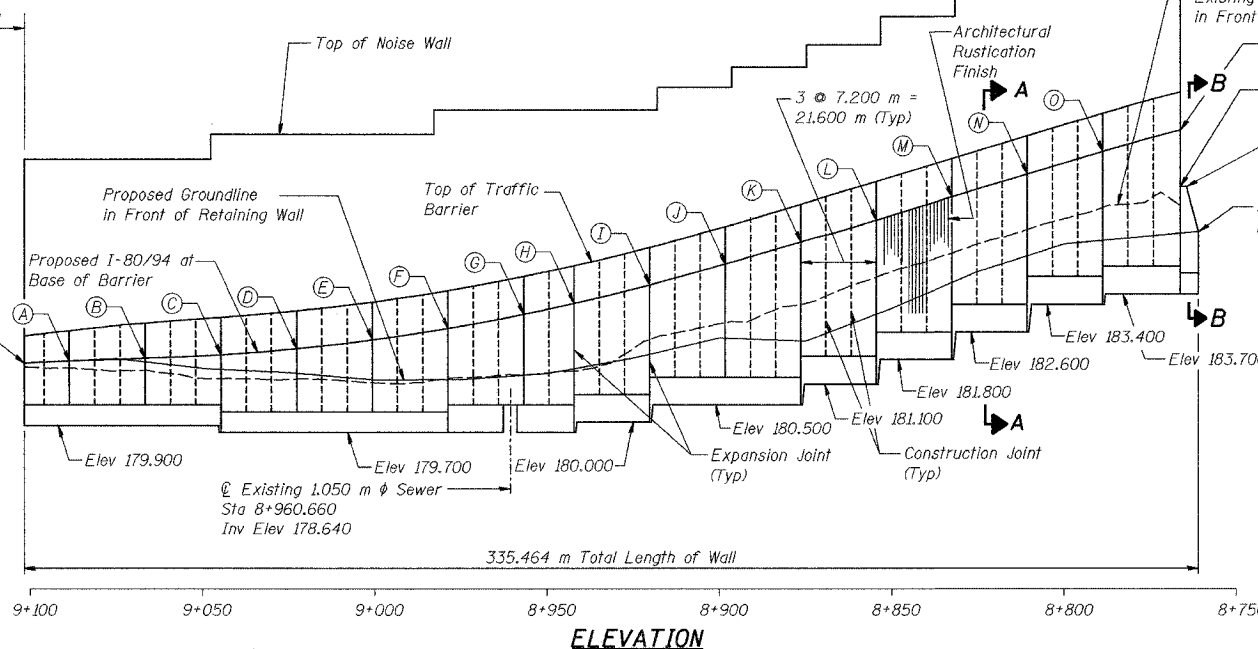
CURVE DATA I-80/94

$\Delta = 20^\circ-51'-41"$
 $R = 1,864.600 \text{ m}$
 $T = 343.250 \text{ m}$
 $L = 678.899 \text{ m}$
 $E = 31.331 \text{ m}$
 $P.C. \text{ Sta} = 8+603.684$
 $P.I. \text{ Sta} = 8+946.934$
 $P.T. \text{ Sta} = 9+282.583$
 $S.E. = 3.0 \%$

CURVE DATA RAMP A

$\Delta = 12^\circ-33'-26"$
 $R = 1,466.000 \text{ m}$
 $T = 161.294 \text{ m}$
 $L = 321.295 \text{ m}$
 $E = 8.846 \text{ m}$
 $P.C. \text{ Sta} = 20+448.434$
 $P.I. \text{ Sta} = 20+609.727$
 $P.T. \text{ Sta} = 20+769.729$
 $S.E. = 3.0 \%$

- LEGEND**
- ⊕ - Soil Boring Location
 - - Existing Roadway/Structure
 - - Proposed Roadway/Structure
 - ⊙ - Tree
 - - Shrubs/Brush
 - - Proposed Storm Sewer
 - - Existing Sanitary Sewer
 - - Existing Storm Sewer
 - - Existing Water Main
 - - Electrical Aerial Cable
 - - Existing Gas Line
 - - Existing Cable TV
 - - Existing Fiberoptics



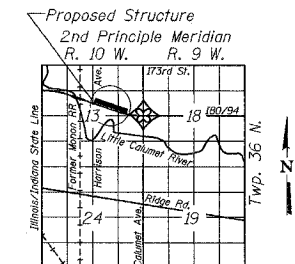
Note: Retaining Wall is built in straight line segments between Expansion and Construction Joints. Back Face of the Retaining Wall is aligned with the outside edge of shoulder at joints.

DESIGNED	KFA
CHECKED	BPS
DRAWN	MJB
CHECKED	GSP



Gary S. Powell
 GARY S. POWELL, S.E.
 IL. LIC. NO. 081-004771
 EXP 11-30-2006
 DATE 09-12-2005

Gary S. Powell
 GARY S. POWELL, P. E.
 IN. LIC. NO. 10403944
 EXP 07-31-2006
 DATE 09-12-2005



ILLINOIS DEPARTMENT OF TRANSPORTATION
 1-80/94/US 6
 KINGERY-BORMAN EXPRESSWAY
 BURNHAM ROAD TO US 41

GENERAL PLAN
 SECTION 2626.2-R-2
 LAKE COUNTY, INDIANA
 STATION 8+762.750 TO STATION 9+101.839
 STRUCTURE NO. 016-W915
 DATE 09/05

AMERICAN
 CONSULTING ENGINEERS