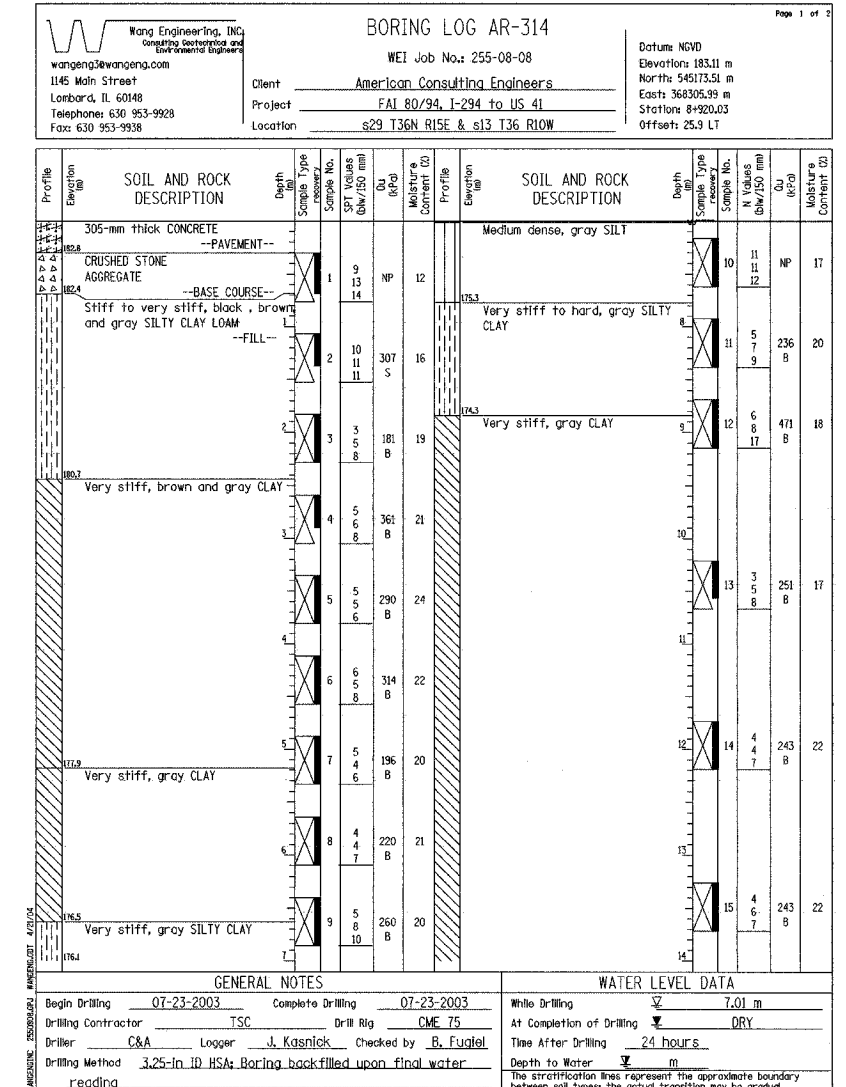
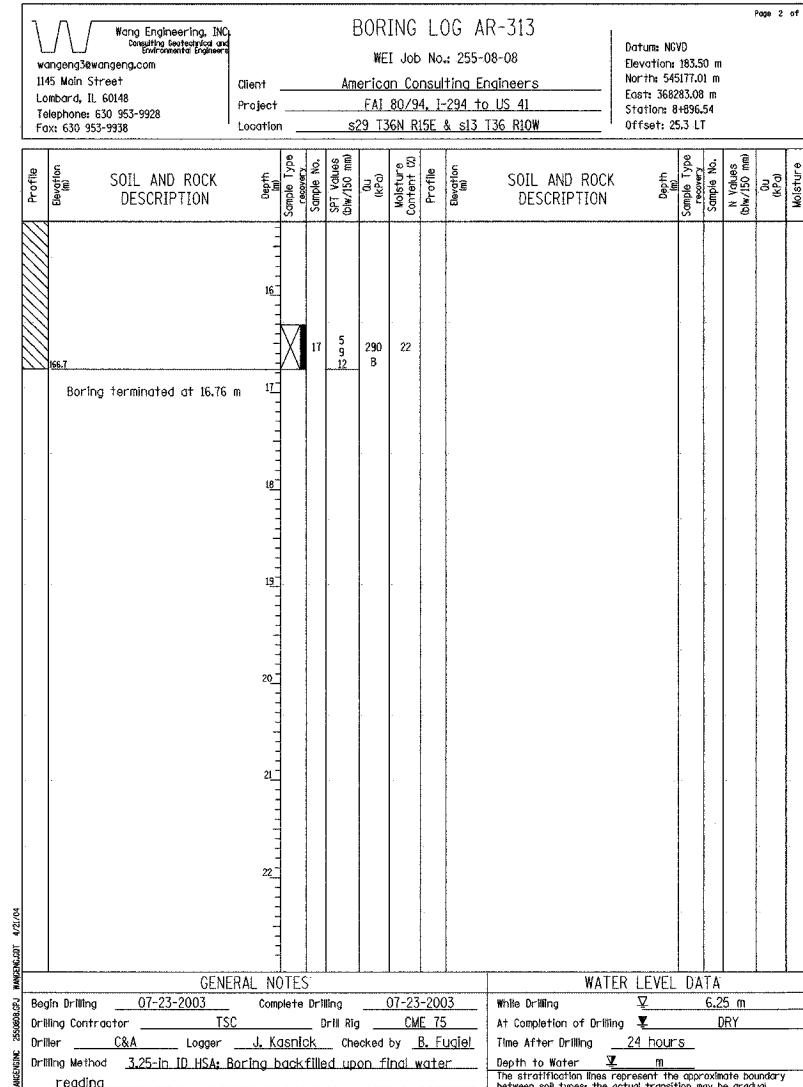
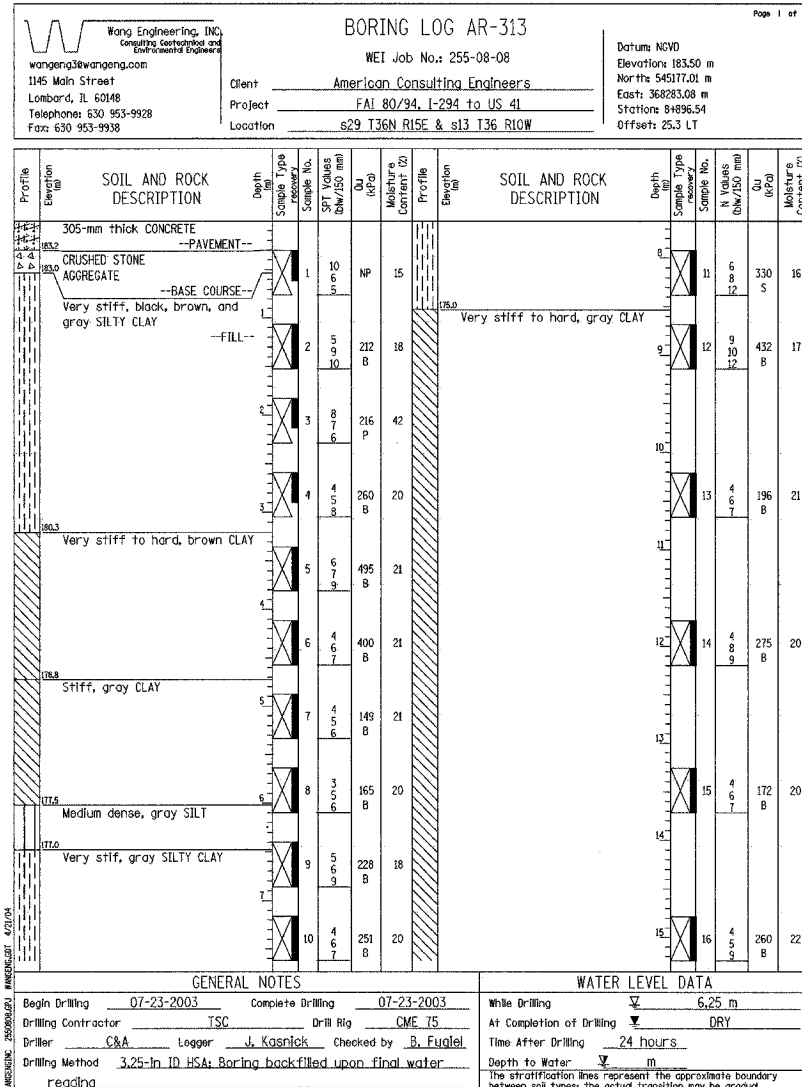


**BORING NO. AR-313 (1 OF 2)**

**BORING NO. AR-313 (2 OF 2)**

**BORING NO. AR-314 (1 OF 2)**



DESIGNED	KFA
CHECKED	BPS
DRAWN	MJB
CHECKED	GSP

ILLINOIS DEPARTMENT OF TRANSPORTATION  
I-80/94/US 6  
KINGERY-BORMAN EXPRESSWAY  
BURNHAM ROAD TO US 41

**BORING LOGS (3 OF 7)**  
SECTION 2626.2-R-2  
LAKE COUNTY, INDIANA  
STATION 8+762.750 TO STATION 9+101.839  
STRUCTURE NO. 016-W915  
DATE 09/05

**AMERICAN**  
CONSULTING ENGINEERS