

GENERAL NOTES

Plan dimensions and details relative to existing structure have been taken from existing plans and are subject to nominal construction variations. It shall be the Contractor's responsibility to verify such dimensions and details in the field and make necessary approved adjustments prior to construction or ordering of materials. Such variations shall not be cause for additional compensation for a change in the scope of the work, however, the Contractor will be paid for the quantity actually furnished at the unit price bid for the work.

Any damage done to the bridge during beam removal shall be repaired by the Contractor. Cost to be included in the cost of "Removal of Existing P.P.C. Deck Beams".

Reinforcement bars shall conform to the requirements of AASHTO M 31 or M 322 Grade 60.

The top surface of the beams shall be finished in accordance with Article 504.06 of the Standard Specifications except that the surface shall not be roughened by brooming. The finished surface shall be free of depressions or high spots with sharp corners, and the top edge of keys shall be rounded or chamfered a minimum of 1/4".

Temporary concrete barrier shall only be anchored into the overlay and not the PPC Deck Beams.

All structural steel shall be shop painted with the inorganic zinc rich primer per AASHTO M300, Type 1. Cost included with Furnishing and Erecting Structural Steel.

Existing reinforcement extending into the removal area shall be cleaned, straightened and incorporated into the new construction. Any reinforcement bars that are damaged during concrete removal shall be replaced with an approved bar splicer or anchorage system. Cost shall be included with Concrete Removal.

For stage construction details see Roadway Plans.

TOTAL BILL OF MATERIAL

ITEM	UNIT	QUANTITY
Bituminous Concrete Surface Removal	Sq. Yd.	100
Waterproofing Membrane System	Sq. Yd.	305
Removal of Existing PPC Deck Beams	Sq. Ft.	2221
Bituminous Concrete Surface Course, Superpave Mix "D", N 50	Tons	34.3
PC Mortar Fairing Course	Foot	1219
PPC Deck Beams (27" Depth)	Sq. Ft.	2169
Concrete Removal	Cu. Yd.	16.8
Concrete Superstructure	Cu. Yd.	18.7
Protective Coat	Sq. Yd.	72.6
Furnishing and Erecting Structural Steel	Pound	1260
Asbestos Bearing Pad Removal	Each	28
Reinforcement Bars, Epoxy Coated	Pound	2150

**DESIGN STRESSES
PRESTRESS UNITS**

(New Construction)

$f'_c = 5000$ psi

$f'_{ci} = 4000$ psi

$f'_s = 270,000$ (1/2" low relaxation strands)

$f'_{si} = 201,960$ (1/2" low relaxation strands)



Expires: November 30, 2006

DESIGNED	Victor H. Veize
CHECKED	Alan T. Hallaway
DRAWN	[Signature]
CHECKED	VHV ATH

EXAMINED	John A. Morris
PASSED	Ralph E. Anderson

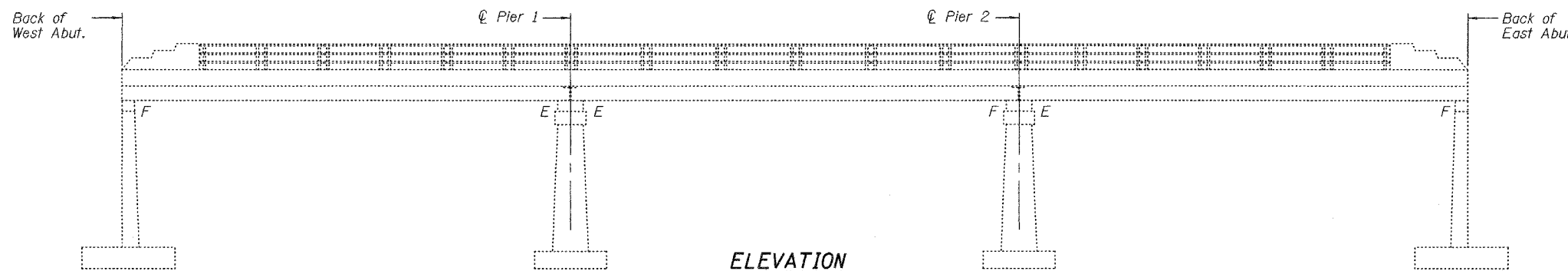
STATE OF ILLINOIS
DEPARTMENT OF TRANSPORTATION

ROUTE NO.	SECTION	COUNTY	TOTAL SHEETS	SHEET NO.
		DuPage	11	1
FED. ROAD DIST. NO. 7	ILLINOIS	FED. AID PROJECT-		

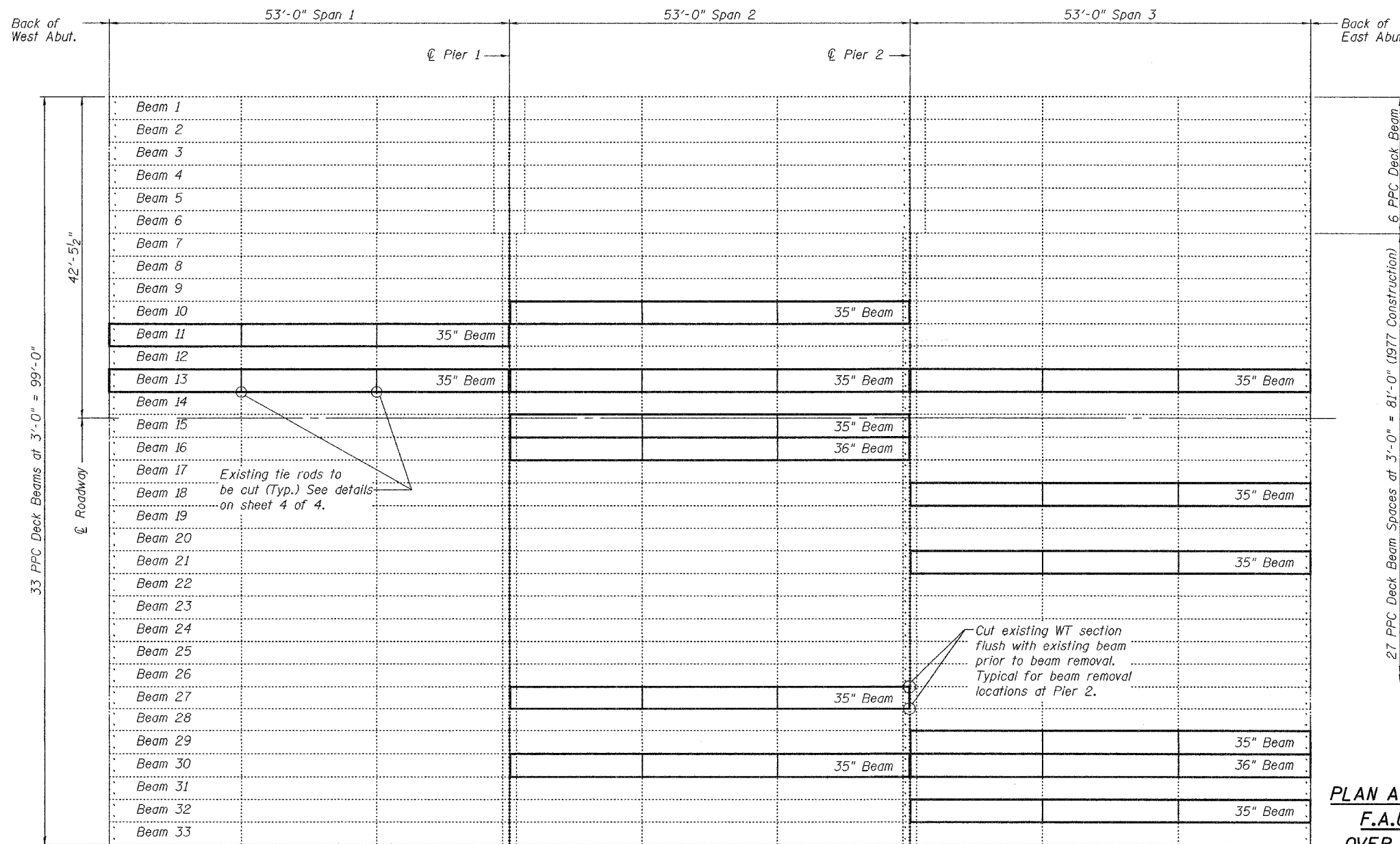
SHEET NO. 1

4 SHEETS

Contract Number: 62912



ELEVATION



PLAN

**PLAN AND ELEVATION
F.A.U. RT. 9877
OVER SALT CREEK
DUPAGE COUNTY
SN 022-0084**

