


F.A.J. RTE.	SECTION	COUNTY	TOTAL SHEETS	SHEET NO.
1313	0606.J BR-2	COOK	10	2
STA. _____		TO STA. _____		
FED. ROAD DIST. NO. _____		ILLINOIS FED. AID PROJECT		

INDEX OF SHEETS

- 1. TITLE SHEET
- 2. INDEX OF SHEETS, GENERAL NOTES, STATE STANDARDS
- 3. SUMMARY OF QUANTITIES
- 4. TYPICAL SECTION, TRAFFIC CONTROL DETAILS
- 5.-9. BRIDGE PLANS
- 10. PARTIAL RAMP AND SHOULDER CLOSURE DETAILS

STATE STANDARDS

- 701301-02 LANE CLOSURE, 2L, 2W, SHORT TIME OPERATIONS
- 701400-02 APPROACH TO LANE CLOSURE, FREEWAY/EXPRESSWAY
- 701401-03 LANE CLOSURE, FREEWAY/EXPRESSWAY
- 701446 TWO LANE CLOSURE, FREEWAY/EXPRESSWAY
- 701502-01 URBAN LANE CLOSURE, 2L, 2W WITH BIDIRECTIONAL LEFT TURN LANE
- ~~701606-04 URBAN LANE CLOSURE, MULTILANE, 2W WITH MOUNTABLE MEDIAN~~ 
- 701801-03 LANE CLOSURE, MULTILANE 1W OR 2W CROSSWALK OR SIDEWALK CLOSURE
- 702001-05 TRAFFIC CONTROL DEVICES
- 704001-02 TEMPORARY CONCRETE BARRIER

GENERAL NOTES

BEFORE STARTING ANY WORK THE CONTRACTOR SHALL CALL "J.U.L.I.E" AT (800) 892-0123 FOR FIELD LOCATIONS OF BURIED ELECTRIC, TELEPHONE AND GAS UTILITIES. 48 HOUR NOTIFICATION IS REQUIRED

THE CONTRACTOR WILL NOT BE ALLOWED TO SET UP A YARD OR FIELD OFFICE ON STATE PROPERTY WITHOUT WRITTEN PERMISSION FROM THE DEPARTMENT.

WHEN ARTIFICIAL LIGHTING IS UTILIZED IN NIGHT OPERATIONS, THE CONTRACTOR SHALL EXERCISE THE UTMOST PRECAUTIONS IN PREVENTING ADVERSE VISIBILITY TO THE MOTORING PUBLIC AND ADJOINING RESIDENTIAL AREAS.

THE DAMAGE TO EXISTING PAVEMENT MARKINGS OR RAISED REFLECTIVE PAVEMENT MARKERS OUTSIDE THE REMOVAL LINE SHOWN ON THE PLANS SHALL BE REPLACED AT THE CONTRACTORS EXPENSE.

BEFORE BEGINNING ANY WORK, THE CONTRACTOR SHALL RETAIN AND RECORD FOR ALL FUTURE REFERENCE, ALL EXISTING PAVEMENT MARKING LINES AND RAISED REFLECTIVE PAVEMENT MARKERS IN ORDER THAT THESE LOCATIONS CAN BE RE-ESTABLISHED FOR STRIPING. EXACT LOCATIONS FOR ALL PAVEMENT MARKINGS SHALL BE AS DIRECTED BY THE ENGINEER.

IT SHALL BE THE CONTRACTOR'S RESPONSIBILITY TO VERIFY ALL DIMENSIONS AND CONDITIONS EXISTING IN THE FIELD PRIOR TO CONSTRUCTION AND ORDERING OF MATERIALS.

THE CONTRACTOR SHALL CONTACT THE DISTRICT ONE TRAFFIC CONTROL SUPERVISOR AT (847) 705-4151 FOR EXPRESSWAYS AND (847) 705-4470 FOR ARTERIALS A MINIMUM OF 72 HOURS IN ADVANCE OF BEGINNING WORK.

THESE PLANS HAVE BEEN PREPARED FROM NOTES RECEIVED FROM BRIDGE INSPECTORS.

DO NOT SCALE PLANS FOR CONSTRUCTION DIMENSIONS.

THE CONTRACTOR SHALL COORDINATE CONSTRUCTION ACTIVITIES WITH UTILITY COMPANIES.

THE "ADVANCED WARNING SIGN DETAIL FOR ARTERIAL TRAFFIC" LOCATED IN THE SPECIAL PROVISIONS FOR "TEMPORARY INFORMATION SIGNING FOR LANE CLOSURES" IS APPLICABLE ONLY TO ARTERIAL ROADS AND SHALL NOT BE APPLIED TO EXPRESSWAYS.

THE CONTRACTOR SHALL SALVAGE AND RETURN THE EXISTING STEEL CARRIER BEAM (W33 X 141, 61'-0") TO:

DISTRICT BRIDGE OFFICE
1101 BIESTERFIELD RD.
ELK GROVE VILLAGE, IL 60007
CONTACT SHAKER ASFOUR AT (847) 956-1501

THIS WORK SHALL BE INCLUDED IN THE COST OF "STRUCTURAL STEEL REMOVAL", WHICH COST SHALL INCLUDE REMOVING, TRANSPORTING AND UNLOADING THE EXISTING BEAM TO THE ABOVE YARD.

WHEN REMOVING THE EXISTING DAMAGED STEEL BEAM THE CONTRACTOR SHALL TAKE APPROPRIATE PRECAUTIONS TO ENSURE THAT THE DECK AND BEAM ARE PROPERLY SUPPORTED DURING THE ENTIRE REMOVAL OPERATION SO AS TO PROTECT THE TRAFFIC AND PAVEMENT BELOW THE BRIDGE. THE CONTRACTOR SHALL SUBMIT THE REMOVAL SEQUENCE AND PROCEDURE TO THE ENGINEER FOR APPROVAL PRIOR TO ANY REMOVAL OF THE EXISTING CONCRETE DECK, STEEL CARRIER BEAM OR DAMAGED STEEL BEAM. COST IS INCLUDED IN THE COST OF "STRUCTURAL STEEL REMOVAL".


REVISIONS	
NAME	DATE

ILLINOIS DEPARTMENT OF TRANSPORTATION

GENERAL NOTES, INDEX OF SHEETS
STATE STANDARDS

SCALE: VERT.
HORIZ.
DATE

DRAWN BY
CHECKED BY

 Rev. 1-3-06 Rev.

F.A.U. RTE.	SECTION	COUNTY	TOTAL SHEETS	SHEET NO.
1313	0606.1 BR-2	COOK	10	3
FED. ROAD DIST. NO. 1		ILLINOIS	HIGHWAY PROJECT	

MCHD CLAIM # 712697

SUMMARY OF QUANTITIES			CONSTRUCTION TYPE CODE							
CODE NO	ITEM	UNIT	MCHD TOTAL QUANTITIES	SFTY-2A						
				URBAN 016-0825	SFTY-3N					
50102400	CONCRETE REMOVAL	CU YD	3.1	3.1						
50300255	CONCRETE SUPERSTRUCTURE	CU YD	3.1	3.1						
50500405	FURNISHING AND ERECTING STRUCTURAL STEEL	POUND	11290	11290						
50501110	STRUCTURAL STEEL REMOVAL	POUND	11290	11290						
50501130	STRUCTURAL STEEL REPAIR	POUND	2550	2550						
50800205	REINFORCEMENT BARS, EPOXY COATED	POUND	120	120						
67000400	ENGINEER'S FIELD OFFICE, TYPE A	CAL MO	2	2						
67100100	MOBILIZATION	L SUM	1	1						
70102625	TRAFFIC CONTROL AND PROTECTION, STANDARD 701606	L SUM	1	1						⚠
70102640	TRAFFIC CONTROL AND PROTECTION, STANDARD 701801	L SUM	1	1						
70400100	TEMPORARY CONCRETE BARRIER	FOOT	160	160						
X0322467	TEMPORARY INFORMATION SIGNING FOR LANE CLOSURE	SQ FT	48	48						
X7011015	TRAFFIC CONTROL AND PROTECTION (EXPRESSWAYS)	L SUM	1	1						
Z0003600	BEAM STRAIGHTENING	L SUM	1	1						
Z0030240	IMPACT ATTENUATORS, TEMPORARY (NON-REDIRECTIVE), TEST LEVEL 2	EACH	2						2	
Z0073300	TEMPORARY SHORING AND CRIBBING	L SUM	1	1						
Z0073351	TEMPORARY SLAB SUPPORT SYSTEM	L SUM	1	1						
70102622	TRAFFIC CONTROL AND PROTECTION STANDARD 701502	L SUM	1	1						

Ⓢ SFTY-3N

⚠ Rev. 1-3-06

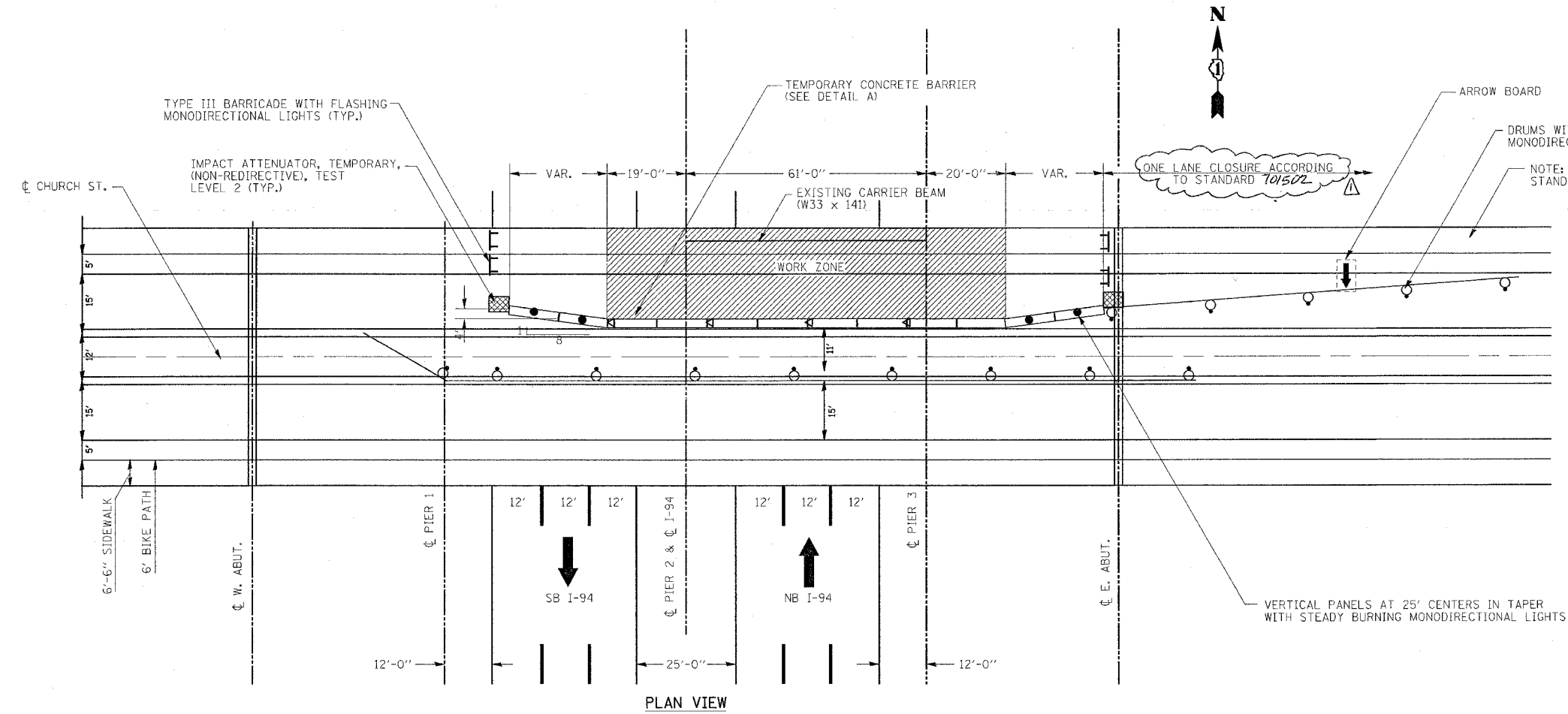
Rev.

REVISIONS	
NAME	DATE

ILLINOIS DEPARTMENT OF TRANSPORTATION
SUMMARY OF QUANTITIES

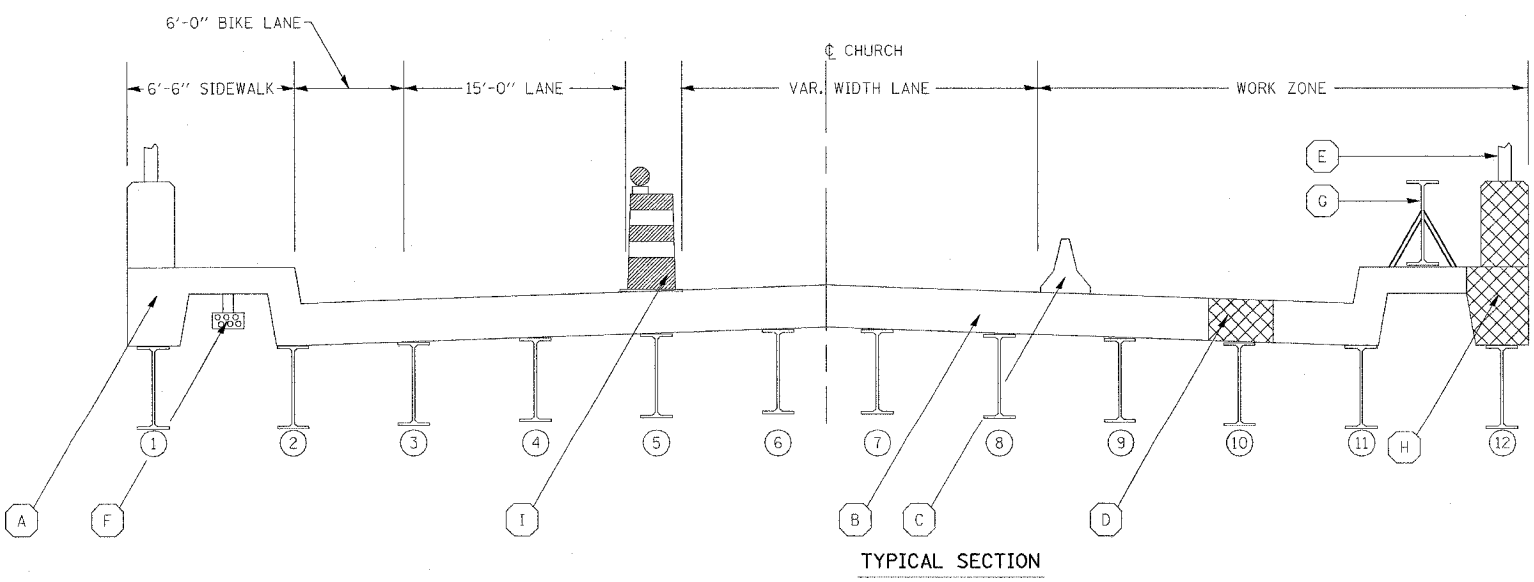
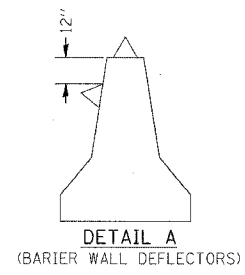
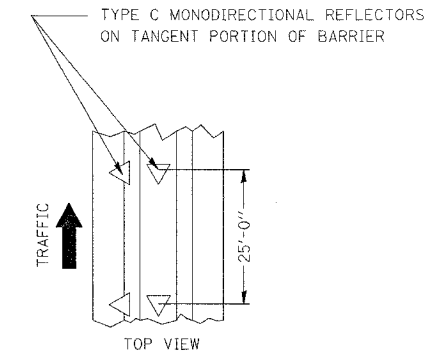
10/27/2005 10:27:05 AM C:\projects\102697\102697.dwg

F.A. RTE.	SECTION	COUNTY	TOTAL SHEETS	SHEET NO.
1313	0606.1 BR-2	COOK	10	4
STA. _____		TO STA. _____		
FED. ROAD DIST. NO. _____		ILLINOIS FED. AID PROJECT		



NOTE: BLACK PAVEMENT MARKING TAPE, TYPE III, SHALL BE USED TO COVER ALL CONFLICTING STRIPING. THE COST OF REMOVAL SHALL BE INCLUDED IN THE COST OF TRAFFIC CONTROL AND PROTECTION, STANDARD 701502

NOTE: TRAFFIC CONTROL AND SIGNING SHOULD FOLLOW STANDARD 701502 WHEN NOT SPECIFIED HERE.



- (A) EXISTING SIDEWALK
- (B) EXISTING CONCRETE BRIDGE DECK
- (C) TEMPORARY CONCRETE BARRIER (SEE STD. 701401)
- (D) CONCRETE BRIDGE DECK TO BE REMOVED AND REPLACED
- (E) PEDESTRIAN RAILING TO BE REMOVED AND REINSTALLED
- (F) EXISTING UTILITY CONDUITS (UNDER SOUTH SIDEWALK ONLY)
- (G) EXISTING CARRIER BEAM TO BE SALVAGED
- (H) EXISTING SIDEWALK AND PARAPET TO BE REMOVED AND REPLACED
- (I) DRUM WITH STEADY BURNING MONODIRECTIONAL LIGHT

REVISIONS	
NAME	DATE

ILLINOIS DEPARTMENT OF TRANSPORTATION

TRAFFIC CONTROL DETAILS

SCALE: VERT. _____
HORIZ. _____

DATE _____ DRAWN BY _____
CHECKED BY _____

PLOT DATE = 10/28/2005
 PLOT SCALE = 1/8" = 1'-0"
 PLOT SCALE = 1/8" = 1'-0"
 USER NAME = mstojayr