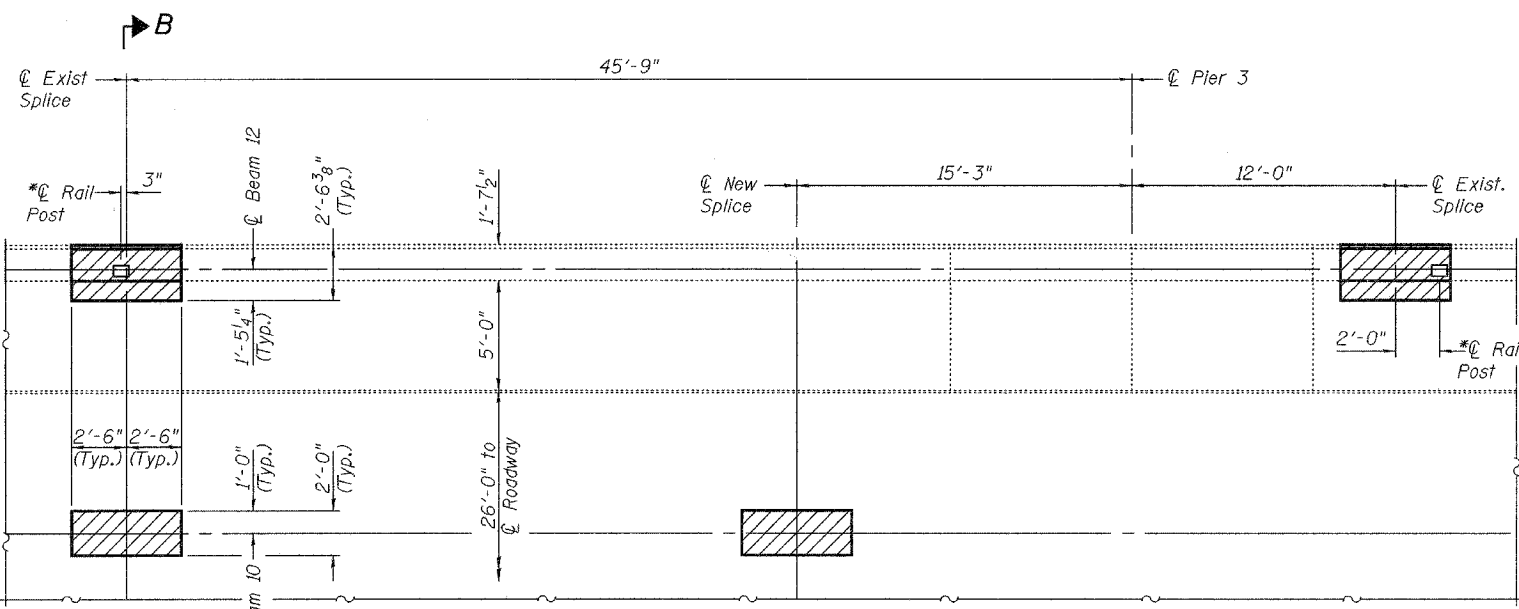
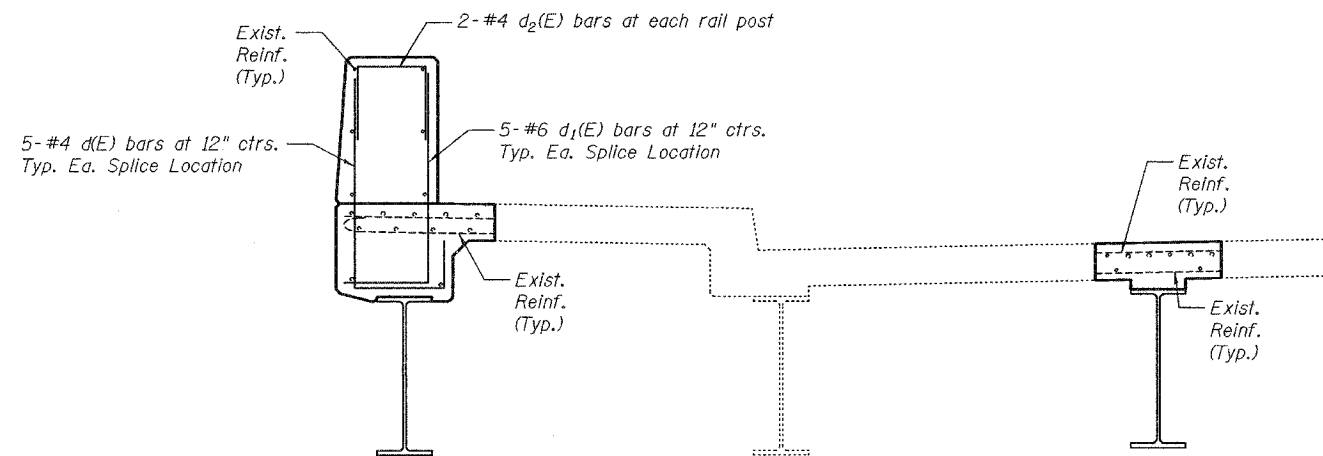
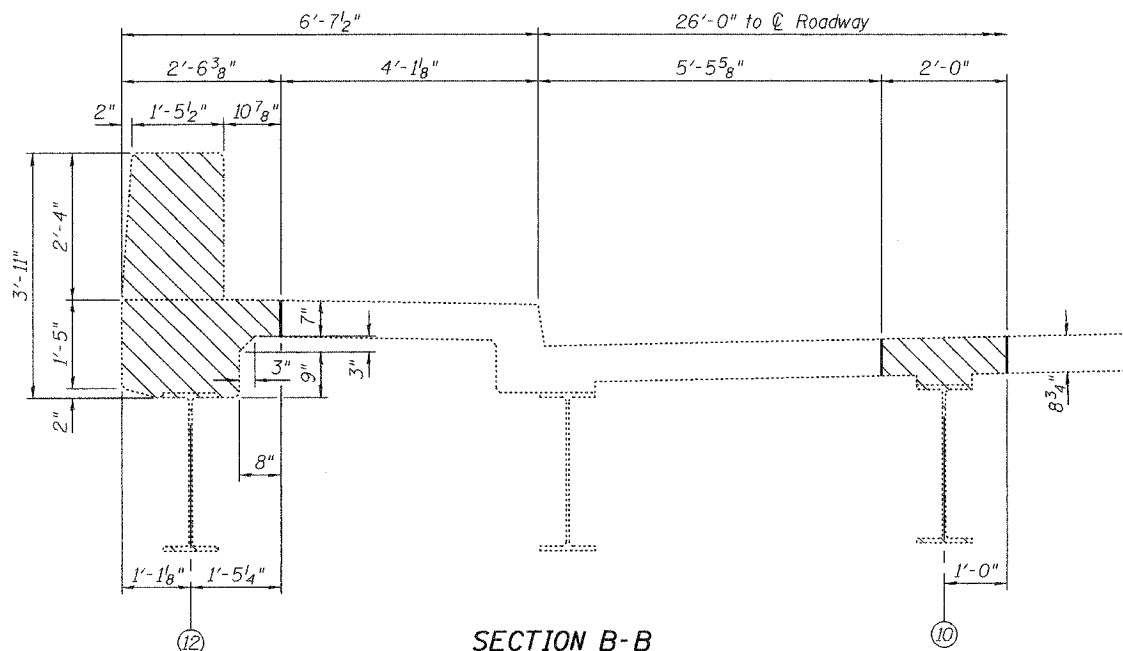


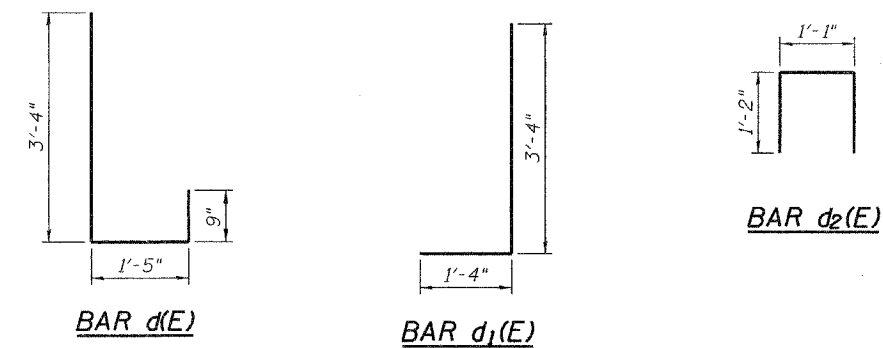
STATE OF ILLINOIS
DEPARTMENT OF TRANSPORTATION

ROUTE NO.	SECTION	COUNTY	ISSUE SHEETS	SHEET NO.
		Cook	10	8
SHEET NO. 4 5 SHEETS				
Contract Number: 62957				



Hatched areas indicate concrete sections to be removed and replaced. Perimeters of concrete removal area shall be sawcut.

*Remove, store and re-install existing post and railing, if necessary. Replace existing rail post anchors. Cost included with Concrete Removal.



BILL OF MATERIAL

Bar	No.	Size	Length	Shape
d(E)	10	#4	5'-6"	L
d ₁ (E)	10	#6	4'-8"	J
d ₂ (E)	4	#4	3'-5"	□
Concrete Removal			Cu. Yd.	3.1
Concrete Superstructure			Cu. Yd.	3.1
Reinforcement Bars, Epoxy Coated			Lbs.	120

Reinforcement bars designated (E) shall be epoxy coated.

DESIGNED	P.S.J.	November 9, 2005
CHECKED	A.T.H.	EXAMINED <i>John A. Morris</i> ENGINEER OF STRUCTURAL SERVICES
DRAWN	Drew Christopher	PASSED <i>Ralph E. Anderson</i> ENGINEER OF BRIDGES AND STRUCTURES
CHECKED	P.S.J. / A.T.H.	

Existing reinforcement extending into the removal area shall be cleaned, straightened and incorporated into the new construction. Any reinforcement bars that are damaged during concrete removal shall be replaced with an approved bar splicer or anchorage system. Cost shall be included with Concrete Removal.

CONCRETE DETAILS
CHURCH STREET / I-94
COOK COUNTY
SN 016-0825