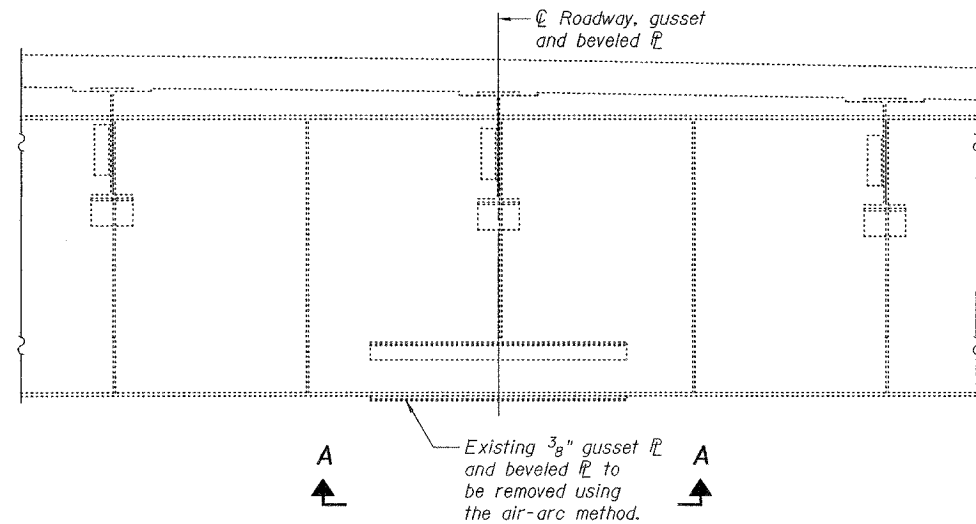
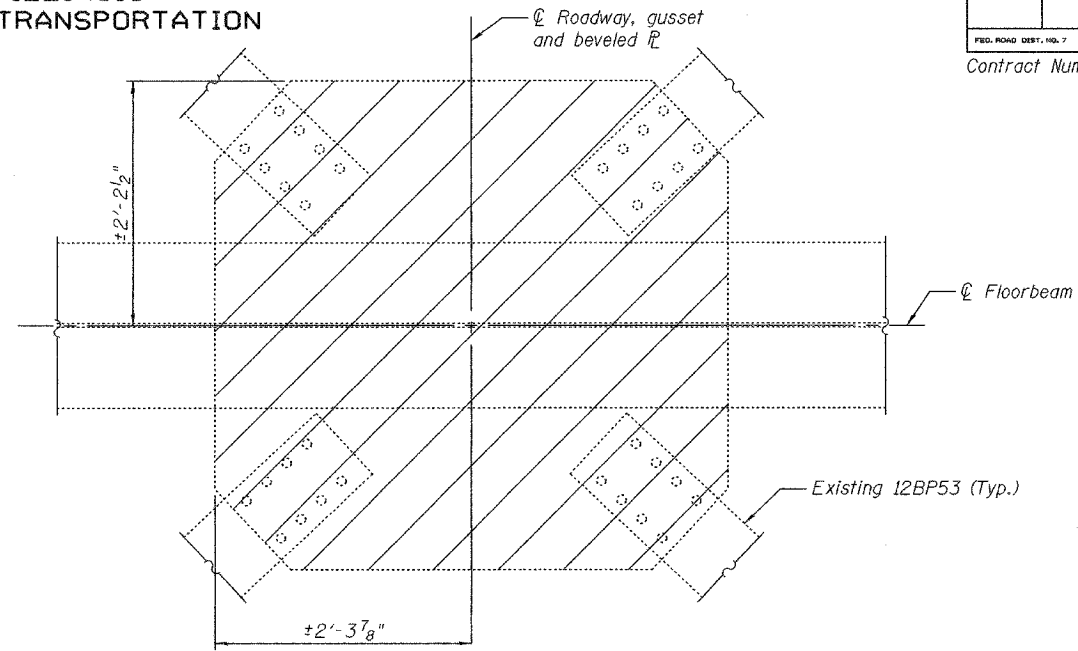


STATE OF ILLINOIS
DEPARTMENT OF TRANSPORTATION

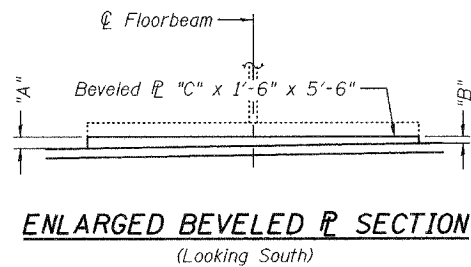
ROUTE NO.	SECTION	COUNTY	LISTED SHEETS	SHEET NO.	SHEET NO. 2 2 SHEETS
		Will	6	5	
FED. ROAD DIST. NO. 7		ILLINOIS		FED. AID PROJECT-	
Contract Number: 62967					



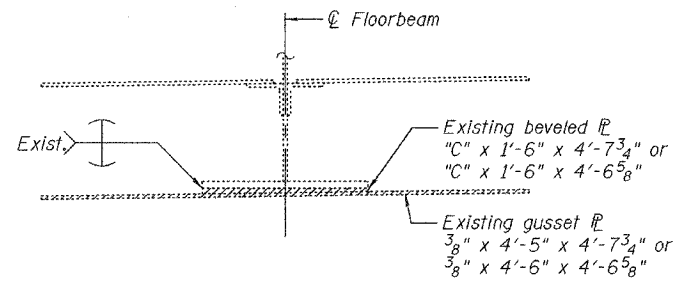
TYPICAL FLOORBEAM ELEVATION
(Looking East)



VIEW A-A
SHOWING REMOVAL



ENLARGED BEVELED FLANGE SECTION
(Looking South)



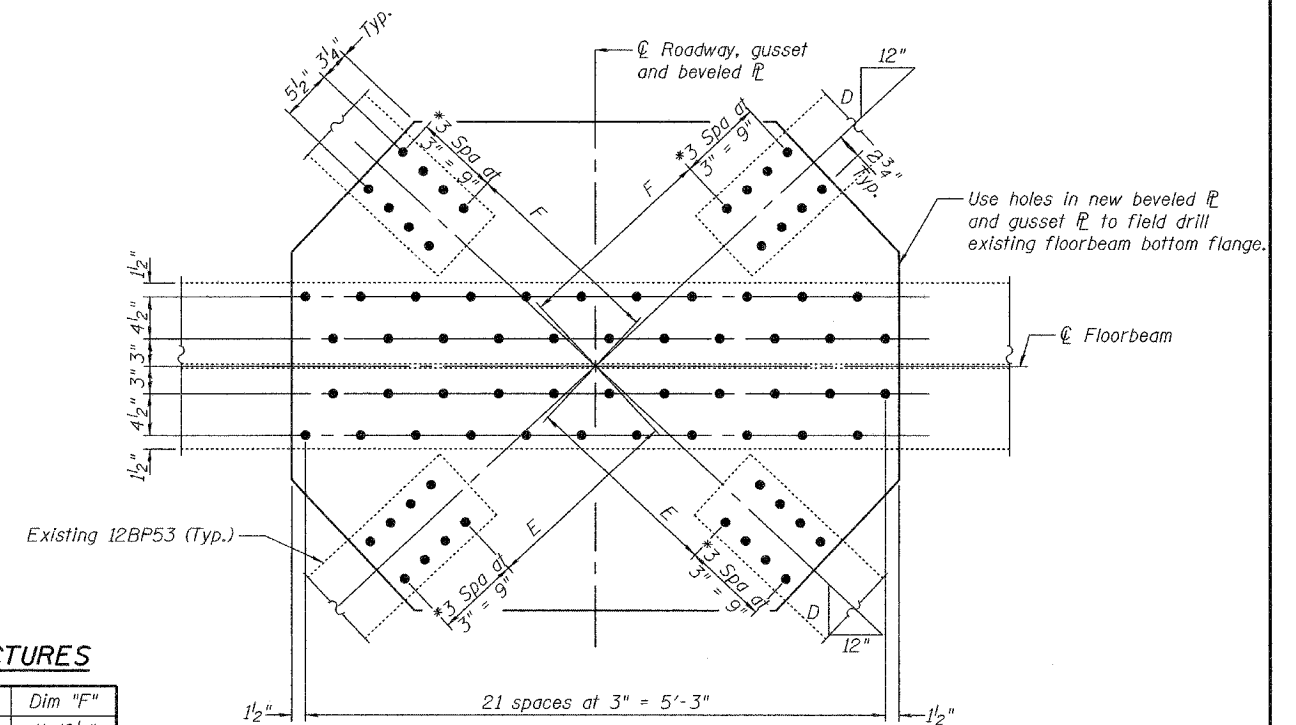
TYPICAL SECTION
SHOWING GUSSET REMOVAL

BEVELED FLANGE DIMENSIONS FOR EASTBOUND AND WESTBOUND STRUCTURES

Location	Dim "A"	Dim "B"	Dim "C"
L1 thru L9	5/8"	3/8"	5/8"
L11	9/16"	7/16"	9/16"
L15	9/16"	1/2"	9/16"
L17 and L19	1/2"	1/2"	1/2"
L21	1/2"	9/16"	9/16"
L25	7/16"	9/16"	9/16"
L27 thru L33	3/8"	5/8"	5/8"

GUSSET FLANGE DIMENSIONS FOR EASTBOUND AND WESTBOUND STRUCTURES

Location	Flange Size	Dim "D"	Dim "E"	Dim "F"
L1 thru L7	3/8" x 4'-5" x 5'-6"	11 3/16"	1'-9 7/8"	1'-10 1/8"
L9	3/8" x 4'-5" x 5'-6"	11 1/4"	1'-9 7/8"	1'-10 1/8"
L11 and L25	3/8" x 4'-5" x 5'-6"	11 1/4"	1'-10"	1'-10"
L15 thru L21	3/8" x 4'-5" x 5'-6"	11 3/16"	1'-10"	1'-10"
L27 thru L33	3/8" x 4'-6" x 5'-6"	11 7/8"	1'-10 1/8"	1'-9 7/8"



NEW GUSSET PLATE DETAIL

*Use holes in 12BP53 as a template to field drill holes in new gusset flange.

DESIGNED	S.J.B.
CHECKED	V.H.V.
DRAWN	Drew Christopher
CHECKED	S.J.B. V.H.V.

EXAMINED	November 9, 2005
PASSED	John A. Morris ENGINEER OF STRUCTURAL SERVICES
	Ralph E. Anderson ENGINEER OF BRIDGES AND STRUCTURES

STRUCTURAL STEEL REPAIRS
F.A.I. RT. 80 OVER
DES PLAINES RIVER
WILL COUNTY
SN 099-0056 (EB) & 0057 (WB)