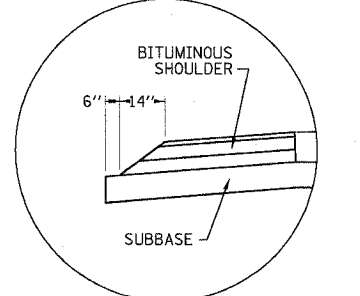
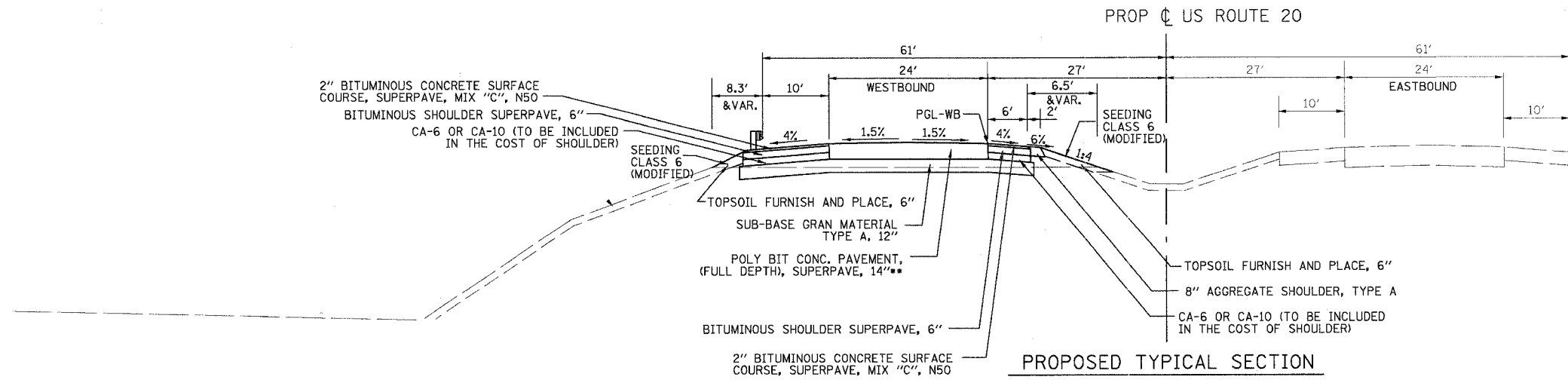
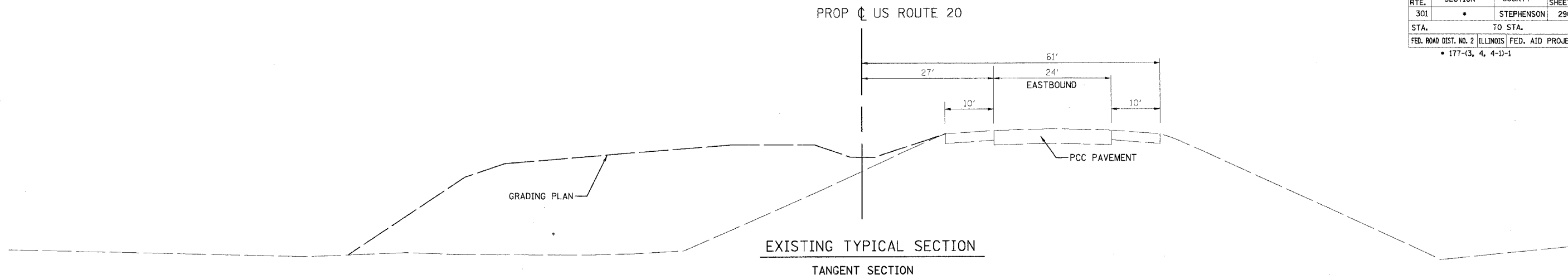


CONTRACT NO. 64577				
F.A.P. RTE.	SECTION	COUNTY	TOTAL SHEETS	SHEET NO.
301	*	STEPHENSON	290	10
STA. TO STA.		FED. ROAD DIST. NO. 2 ILLINOIS FED. AID PROJECT		
• 177-3, 4, 4-1-1				

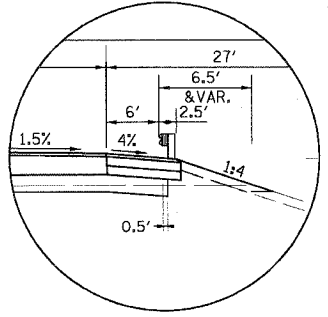


SUBBASE DETAIL UNDER BITUMINOUS SHOULDER

- NOTES:
1. THE CA-16 BACKFILL MATERIAL IN THE PIPE UNDERDRAIN TRENCH SHALL BE INCLUDED IN THE COST OF PIPE UNDERDRAIN AND PIPE UNDERDRAIN (SPECIAL)
 2. STANDARD DITCH IS 3' DEEP.
 3. FORESLOPE SHALL BREAK TO 1:3 WHEN IT EXTENDS MORE THAN 35' FROM PROPOSED EDGE OF PAVEMENT.
 4. SEE CROSS SECTIONS FOR AREAS OF TOPSOIL EXCAVATION AND PLACEMENT.
 5. IN AREAS OF ROCK CUT PLACE 12" OF TOPSOIL.
 6. THE FOLLOWING UNIT WEIGHTS WERE USED IN CALCULATING THE BITUMINOUS QUANTITIES:
112/LBS/SY/IN - SURFACE COURSE
112/LBS/SY/IN - BINDER COURSE
115/LBS/SY/IN - SUB-BASE GRANULAR MATERIAL

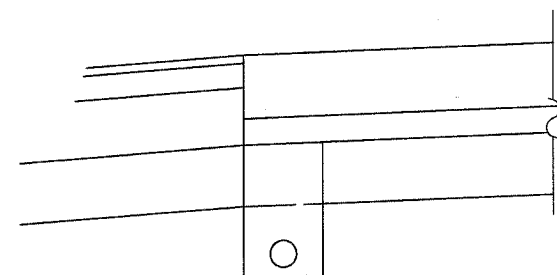
** POLY BIT CONC. PAVEMENT, (FULL DEPTH), SUPERPAVE, 14" SHALL BE COMPOSED OF THE FOLLOWING TWO MIXES:

- 12" POLYMERIZED BITUMINOUS CONCRETE BINDER CSE, SUPERPAVE, IL-19, N90
- 2" POLYMERIZED BITUMINOUS CONCRETE SURFACE COURSE, SUPERPAVE, MIX "D", N90



PROPOSED TYPICAL SECTION

STATION 1914+50.00 TO STATION 1927+00.00
GUARDRAIL STATION 1914+41.97 RT TO STATION 1917+66.97 RT



PIPE UNDERDRAINS DETAIL

SEE STANDARD 601001, SUB-SURFACE DRAINS FOR DIMENSIONS

STATION 1914+50 TO STATION 1942+50 BOTH SIDES OF WB PAVEMENT
STATION 1942+50 TO STATION 1969+41 LEFT SIDE ONLY OF WB PAVEMENT
STATION 1969+41 TO STATION 1982+00 BOTH SIDES OF WB PAVEMENT
STATION 1982+00 TO STATION 1969+50 LEFT SIDE ONLY OF EB PAVEMENT

STRUCTURAL DESIGN INFORMATION (FLEXIBLE PAVEMENT)	
DESIGN PERIOD:	20 YEARS
STRUCTURAL DESIGN TRAFFIC: YEAR	2024
PV =	1.795
SU =	325
MU =	1205
ROAD/STREET CLASSIFICATION:	CLASS I
PERCENT OF STRUCTURAL TRAFFIC IN DESIGN LANE:	
P =	32%
S =	45%
M =	45%
TRAFFIC FACTOR:	TF = 1.11
MINIMUM SOIL SUPPORT:	
IBR =	3.1 (STA. 1711+00 TO 1904+91.14)

REVISIONS	
NAME	DATE
PRE-FINAL	5/24/05

ILLINOIS DEPARTMENT OF TRANSPORTATION

TYPICAL SECTIONS
US ROUTE 20

SCALE: VERT. N/A
HORIZ. N/A
DATE 10/28/05

DRAWN BY DTF
CHECKED BY TVN