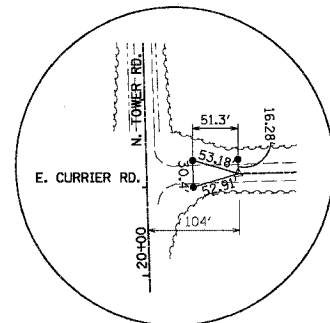
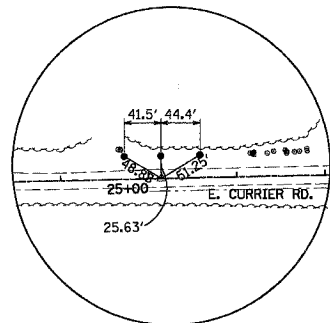


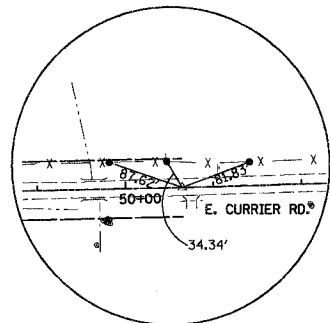
F.A.P. RTE.	SECTION	COUNTY	TOTAL SHEETS	SHEET NO.
301		STEPHENSON	290	18
STA.		TO STA.		
FED. ROAD DIST. NO. 2		ILLINOIS FED. AID PROJECT		



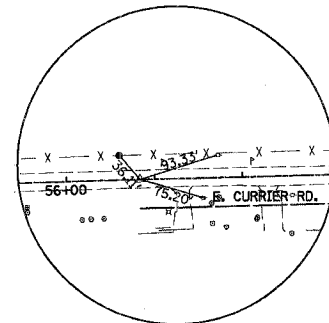
PK NAIL  
 POT 16+14.31  
 N=2058324.831  
 E=2452105.149  
 ELEV.=817.052  
 ALL TIES SET 5/8" REBAR



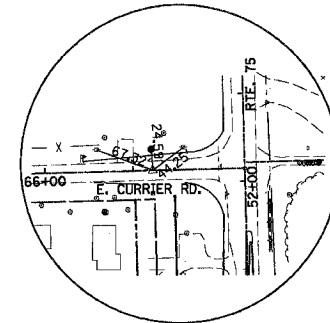
PK NAIL  
 POT 25+14.48  
 N=2058346.023  
 E=2453005.066  
 ELEV.=821.106  
 ALL TIES SET 5/8" REBAR



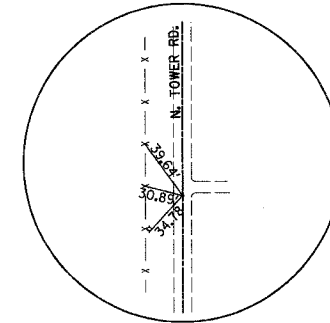
PK NAIL  
 POT 50+64.48  
 N=2058400.663  
 E=2455554.480  
 ELEV.=804.278  
 ALL TIES ARE NAIL AND WASHER



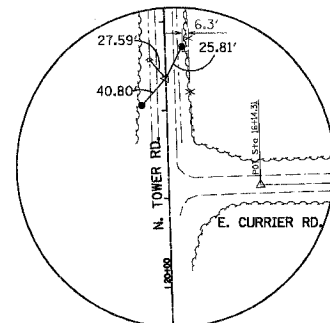
PK NAIL  
 POT 56+83.81  
 N=2058417.836  
 E=2456173.570  
 ELEV.=843.111  
 ALL TIES ARE NAIL AND WASHER



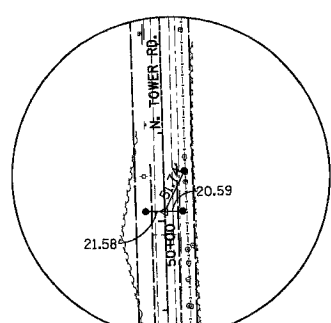
PK NAIL  
 POT 67+22.23  
 N=2058439.833  
 E=2457210.507  
 ALL TIES SET 5/8" REBAR  
 AND NAIL AND WASHER



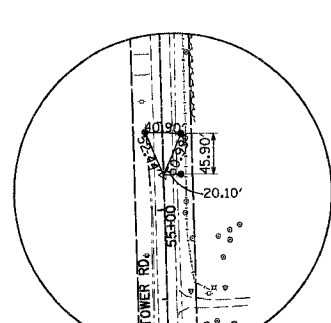
PK NAIL  
 13+62.55  
 ALL TIES ARE NAIL AND WASHER



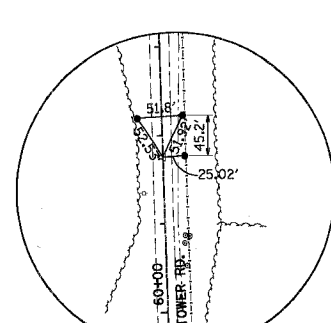
PK NAIL  
 22+36.10  
 N=2058445.238  
 E=2451997.612  
 ELEV.=824.792  
 TIES ARE SET 5/8" REBAR  
 AND NAIL AND WASHER



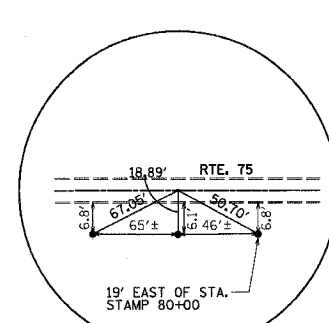
PK NAIL  
 50+10.94  
 N=2061219.4136  
 E=2451934.0873  
 ELEV.=825.032  
 ALL TIES ARE SET 5/8" REBAR



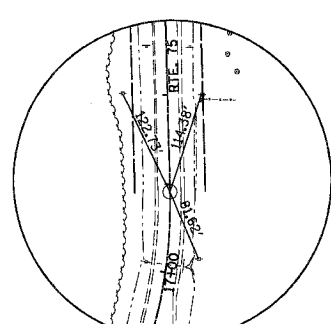
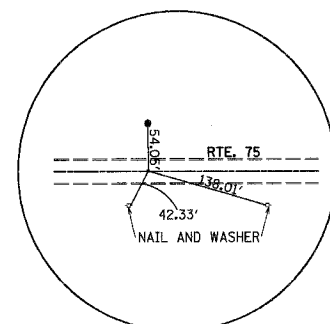
PK NAIL  
 55+40.20  
 N=2061748.1552  
 E=2451919.2744  
 ELEV.=847.192  
 ALL TIES ARE SET 5/8" REBAR



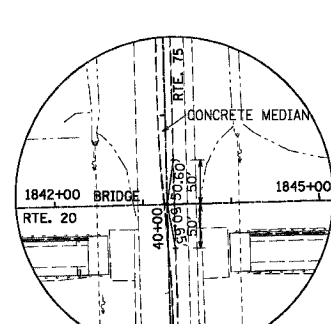
PK NAIL  
 61+76.49  
 N=2062384.4603  
 E=2451899.8872  
 ELEV.=839.274  
 ALL TIES ARE SET 5/8" REBAR



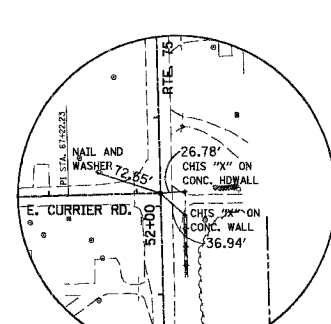
PK NAIL  
 POT 0+00.00  
 N=2054452.3569  
 E=2455923.2301  
 ALL TIES SET 5/8" REBAR



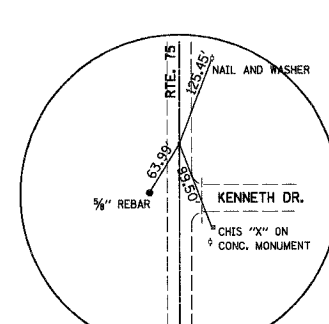
PK NAIL  
 PT 17+91.09  
 N=2055020.4632  
 E=2457398.8316  
 ELEV.=761.636  
 ALL TIES ARE NAIL AND WASHER



PK NAIL  
 40+00.00  
 N=2057228.7256  
 E=2457345.5285  
 ELEV.=810.321  
 ALL TIES ARE CHIS. "X"  
 OM TOP OF CURB



PK NAIL  
 52+14.50  
 N=2058442.8710  
 E=2457316.2210  
 ELEV.=844.486  
 TIES ARE CHIS. "X" ON  
 TOP OF CURB AND NAIL AND WASHER



PK NAIL  
 POT 77+21.97  
 N=2060949.614  
 E=2457255.7130  
 TIES ARE CHIS. "X" ON  
 TOP OF CONC. MON.  
 NAIL AND WASHER  
 AND 5/8" REBAR

REVISIONS	
NAME	DATE

ILLINOIS DEPARTMENT OF TRANSPORTATION

ALIGNMENT, TIES AND  
 BENCHMARKS

SCALE: VERT.  
 HORIZ. NTS  
 DATE 7/15/05

DRAWN BY MBT  
 CHECKED BY JLC