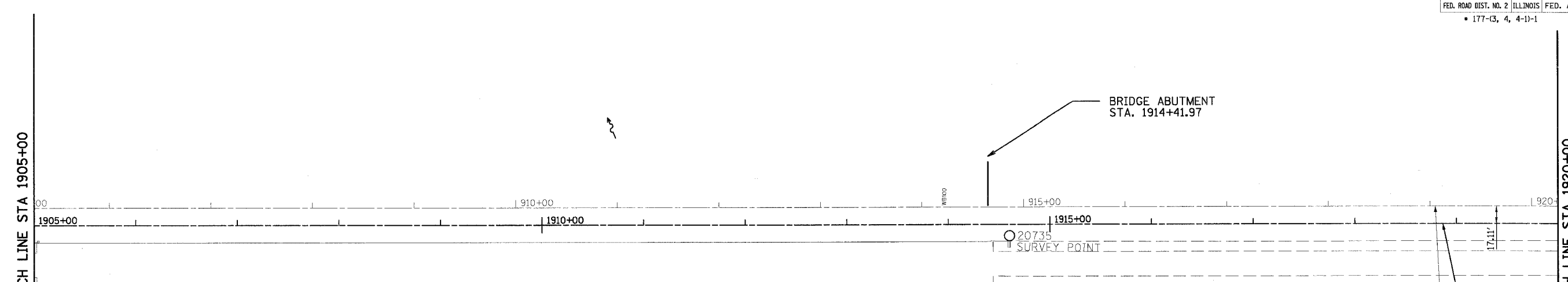
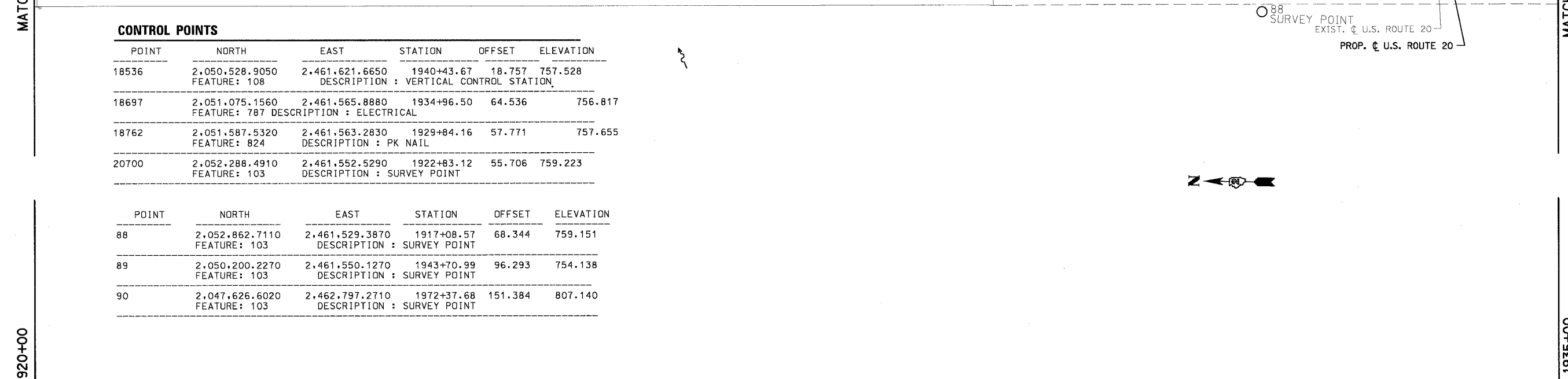


CONTRACT NO. 64577				
F.A.P. RTE.	SECTION	COUNTY	TOTAL SHEETS	SHEET NO.
301	*	STEPHENSON	290	24
STA. 1915+00		TO STA. 1935+00		
FED. ROAD DIST. NO. 2 ILLINOIS FED. AID PROJECT				
* 177-(3, 4, 4-1)-1				



CONTROL POINTS

POINT	NORTH	EAST	STATION	OFFSET	ELEVATION
18536	2,050,528.9050 FEATURE: 108	2,461,621.6650 DESCRIPTION: VERTICAL CONTROL STATION	1940+43.67	18.757	757.528
18697	2,051,075.1560 FEATURE: 787	2,461,565.8880 DESCRIPTION: ELECTRICAL	1934+96.50	64.536	756.817
18762	2,051,587.5320 FEATURE: 824	2,461,563.2830 DESCRIPTION: PK NAIL	1929+84.16	57.771	757.655
20700	2,052,288.4910 FEATURE: 103	2,461,552.5290 DESCRIPTION: SURVEY POINT	1922+83.12	55.706	759.223



POINT	NORTH	EAST	STATION	OFFSET	ELEVATION
88	2,052,862.7110 FEATURE: 103	2,461,529.3870 DESCRIPTION: SURVEY POINT	1917+08.57	68.344	759.151
89	2,050,200.2270 FEATURE: 103	2,461,550.1270 DESCRIPTION: SURVEY POINT	1943+70.99	96.293	754.138
90	2,047,626.6020 FEATURE: 103	2,462,797.2710 DESCRIPTION: SURVEY POINT	1972+37.68	151.384	807.140

POINT	NORTH	EAST	STATION	OFFSET	ELEVATION
637	2,048,363.1640 FEATURE: 821	2,462,465.0310 DESCRIPTION: PIN	1964+75.63	-140.535	777.099
638	2,048,215.5950 FEATURE: 824	2,462,332.5460 DESCRIPTION: PK NAIL	1964+99.13	56.4259	777.821
639	2,048,245.8950 FEATURE: 824	2,462,306.5950 DESCRIPTION: PK NAIL	1964+60.00	55.9771	777.223
640	2,048,176.8450 FEATURE: 821	2,462,245.3370 DESCRIPTION: PIN	1964+71.59	147.4997	776.423

POINT	NORTH	EAST	STATION	OFFSET	ELEVATION
646	2,047,422.3690 FEATURE: 824	2,463,261.3850 DESCRIPTION: PK NAIL	1977+14.33	-21.5795	792.763
647	2,047,391.9930 FEATURE: 824	2,463,227.2430 DESCRIPTION: PK NAIL	1977+10.63	23.9692	792.641
648	2,047,350.2820 FEATURE: 824	2,463,270.4660 DESCRIPTION: PK NAIL	1977+70.69	24.2668	792.719
649	2,045,661.4870 FEATURE: 824	2,465,037.9550 DESCRIPTION: PK NAIL	2002+15.29	24.2428	789.952
650	2,045,619.6590 FEATURE: 824	2,465,082.1760 DESCRIPTION: PK NAIL	2002+76.16	23.9356	789.533
651	2,045,652.9250 FEATURE: 824	2,465,113.3510 DESCRIPTION: PK NAIL	2002+75.72	-21.6529	789.638
652	2,045,695.9690 FEATURE: 824	2,465,068.2580 DESCRIPTION: PK NAIL	2002+13.38	-21.6224	789.912

REVISIONS	
NAME	DATE
PRE-FINAL	05/24/05

ILLINOIS DEPARTMENT OF TRANSPORTATION
ALIGNMENT AND TIES
US ROUTE 20
 SCALE: VERT. _____
 HORIZ. _____
 DATE 10/28/05
 DRAWN BY MKP
 CHECKED BY TVN