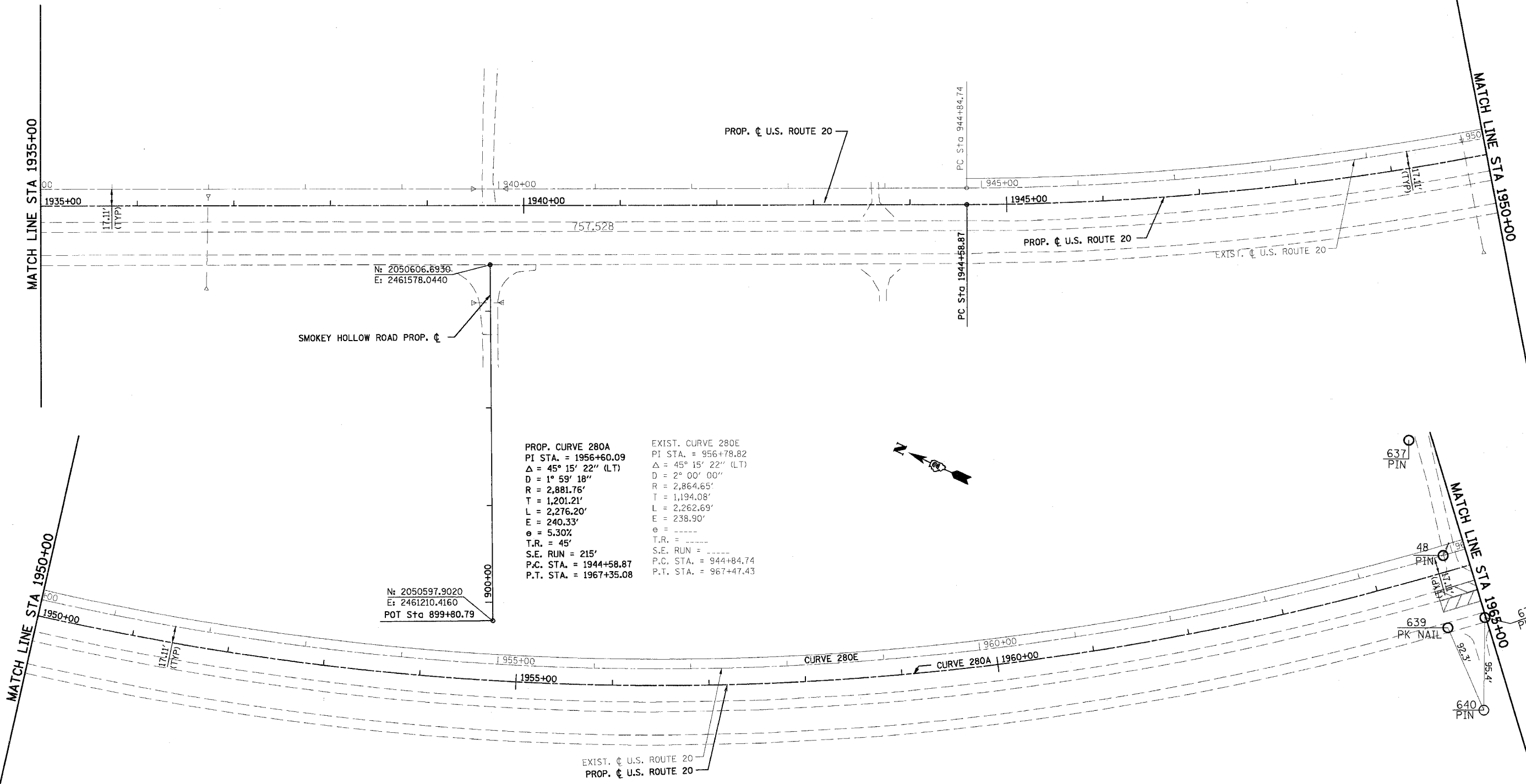


CONTRACT NO. 64577				
F.A.P. RTE.	SECTION	COUNTY	TOTAL SHEETS	SHEET NO.
301	*	STEPHENSON	290	25
STA. 1935+00		TO STA. 1965+00		
FED. ROAD DIST. NO. 2 ILLINOIS FED. AID PROJECT				
* 177-3, 4, 4-1-1				



**PROP. CURVE 280A**  
 PI STA. = 1956+60.09  
 $\Delta = 45^\circ 15' 22''$  (LT)  
 $D = 1^\circ 59' 18''$   
 $R = 2,881.76'$   
 $T = 1,201.21'$   
 $L = 2,276.20'$   
 $E = 240.33'$   
 $e = 5.30\%$   
 $T.R. = 45'$   
 $S.E. RUN = 215'$   
 $P.C. STA. = 1944+58.87$   
 $P.T. STA. = 1967+35.08$

**EXIST. CURVE 280E**  
 PI STA. = 956+78.82  
 $\Delta = 45^\circ 15' 22''$  (LT)  
 $D = 2^\circ 00' 00''$   
 $R = 2,864.65'$   
 $T = 1,194.08'$   
 $L = 2,262.69'$   
 $E = 238.90'$   
 $e =$   
 $T.R. =$   
 $S.E. RUN =$   
 $P.C. STA. = 944+84.74$   
 $P.T. STA. = 967+47.43$

N: 2050606.6936  
 E: 2461578.0440

N: 2050597.9020  
 E: 2461210.4160  
 POT Sta 899+80.79

CURVE NO.	CONTROL POINT	STATION	COORDINATES		$\Delta$	T	L	R
			NORTH	EAST				
280A	CC		2,050,166.8128	2,464,529.2847				
	PC	1944+58.87	2,050,114.1178	2,461,648.0107				
	PI	1956+60.09	2,461,669.9757	2,461,669.9757	$45^\circ 15' 22''$ LT	1,201.212'	2,276.201'	2,881.756'
	PT	1967+35.08	2,048,083.2679	2,462,538.4665				

REVISIONS	
NAME	DATE
PRE-FINAL	05/24/05

ILLINOIS DEPARTMENT OF TRANSPORTATION

ALIGNMENT AND TIES  
US ROUTE 20

SCALE: VERT.  
HORIZ.  
DATE 10/28/05

DRAWN BY MKP  
CHECKED BY TVN