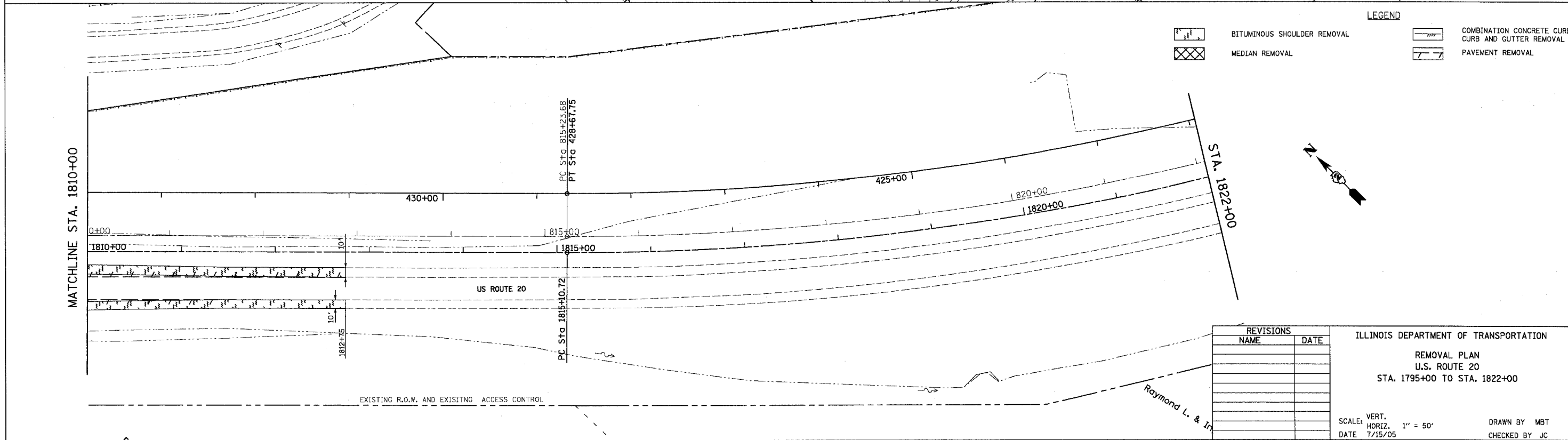
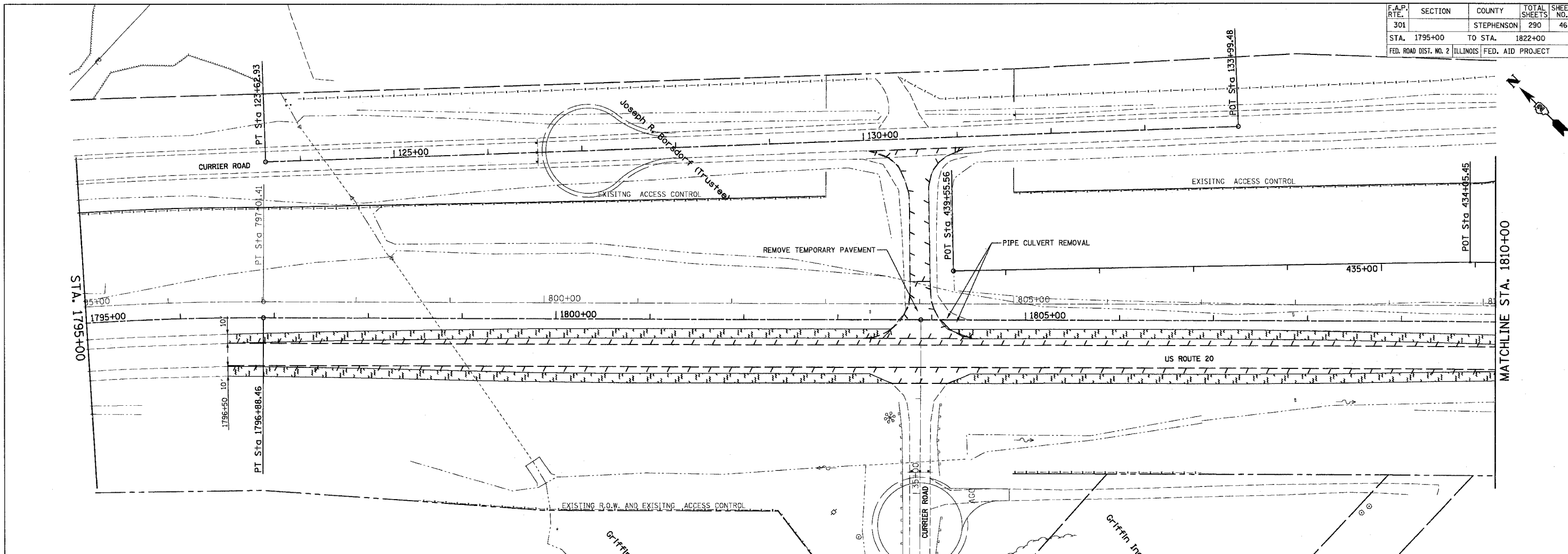


CONTRACT NO. 64577

F.A.P. RTE.	SECTION	COUNTY	TOTAL SHEETS	SHEET NO.
301		STEPHENSON	290	46
STA. 1795+00		TO STA. 1822+00		
FED. ROAD DIST. NO. 2		ILLINOIS FED. AID PROJECT		



LEGEND

-  BITUMINOUS SHOULDER REMOVAL
-  MEDIAN REMOVAL
-  COMBINATION CONCRETE CURB CURB AND GUTTER REMOVAL
-  PAVEMENT REMOVAL

REVISIONS	
NAME	DATE

ILLINOIS DEPARTMENT OF TRANSPORTATION
 REMOVAL PLAN
 U.S. ROUTE 20
 STA. 1795+00 TO STA. 1822+00

SCALE: VERT. 1" = 50'
 HORIZ. 1" = 50'
 DATE 7/15/05
 DRAWN BY MBT
 CHECKED BY JC