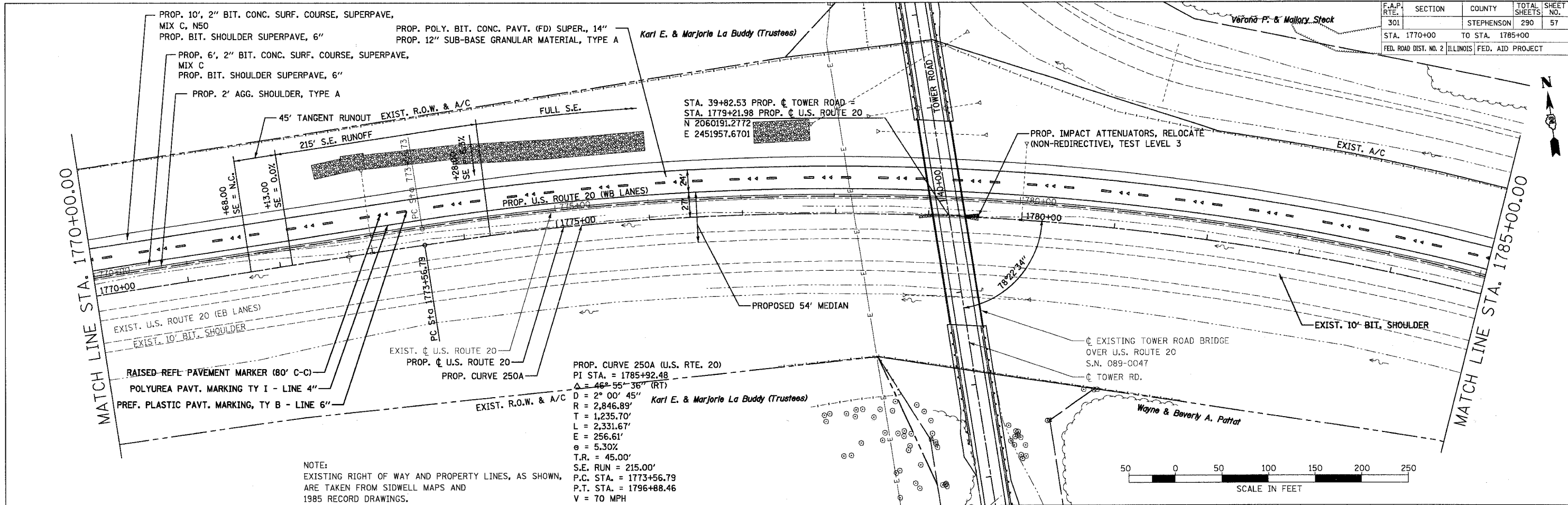


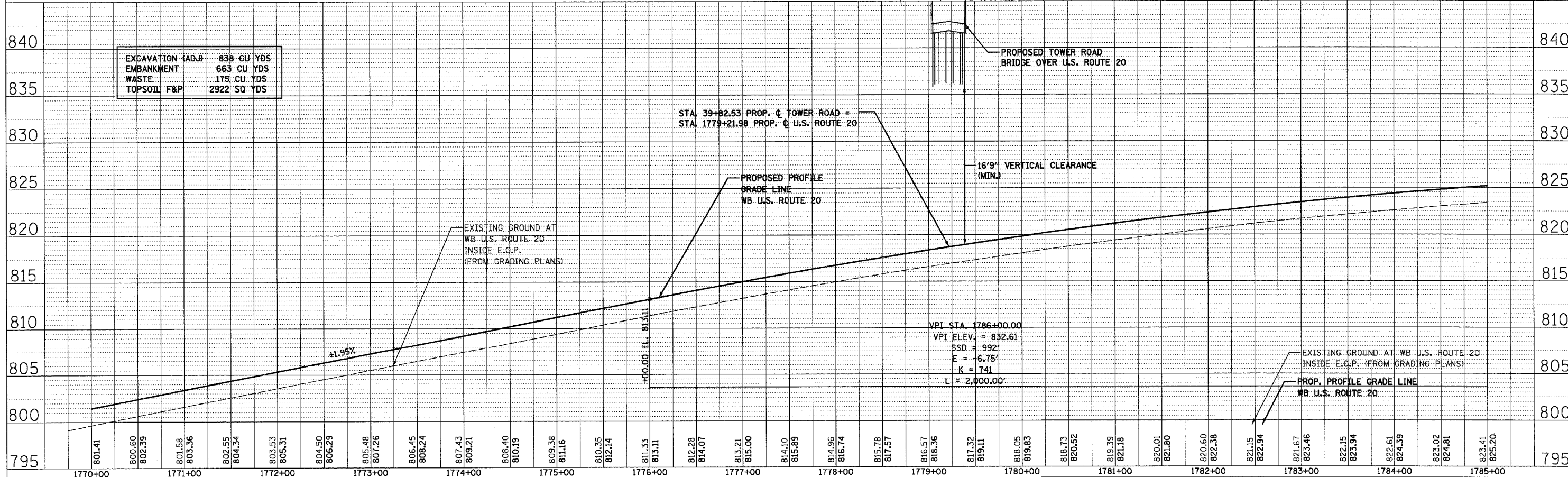
F.A.P. RTE.	SECTION	COUNTY	TOTAL SHEETS	SHEET NO.
301		STEPHENSON	290	57
STA. 1770+00		TO STA. 1785+00		
FED. ROAD DIST. NO. 2 ILLINOIS FED. AID PROJECT				

PLAN	DATE	BY
SURVEYED		
ALIGNED		
CHECKED		
NOTE BOOK		
NO.		

PROFILE	DATE	BY
SURVEYED		
GRADES		
CHECKED		
NOTE BOOK		
NO.		



PROP. CURVE 250A (U.S. RTE. 20)
 PI STA. = 1785+92.48
 $\Delta = 46^{\circ} 55' 36''$ (RT)
 $D = 2^{\circ} 00' 45''$
 $R = 2,846.89'$
 $T = 1,235.70'$
 $L = 2,331.67'$
 $E = 256.61'$
 $\theta = 5.30\%$
 $T.R. = 45.00'$
 $S.E. RUN = 215.00'$
 $P.C. STA. = 1773+56.79$
 $P.T. STA. = 1796+88.46$
 $V = 70$ MPH
 Karl E. & Marjorie La Buddy (Trustees)



\\s01\us20_pav\us20\07.dgn 10/26/2006 11:45:24 AM