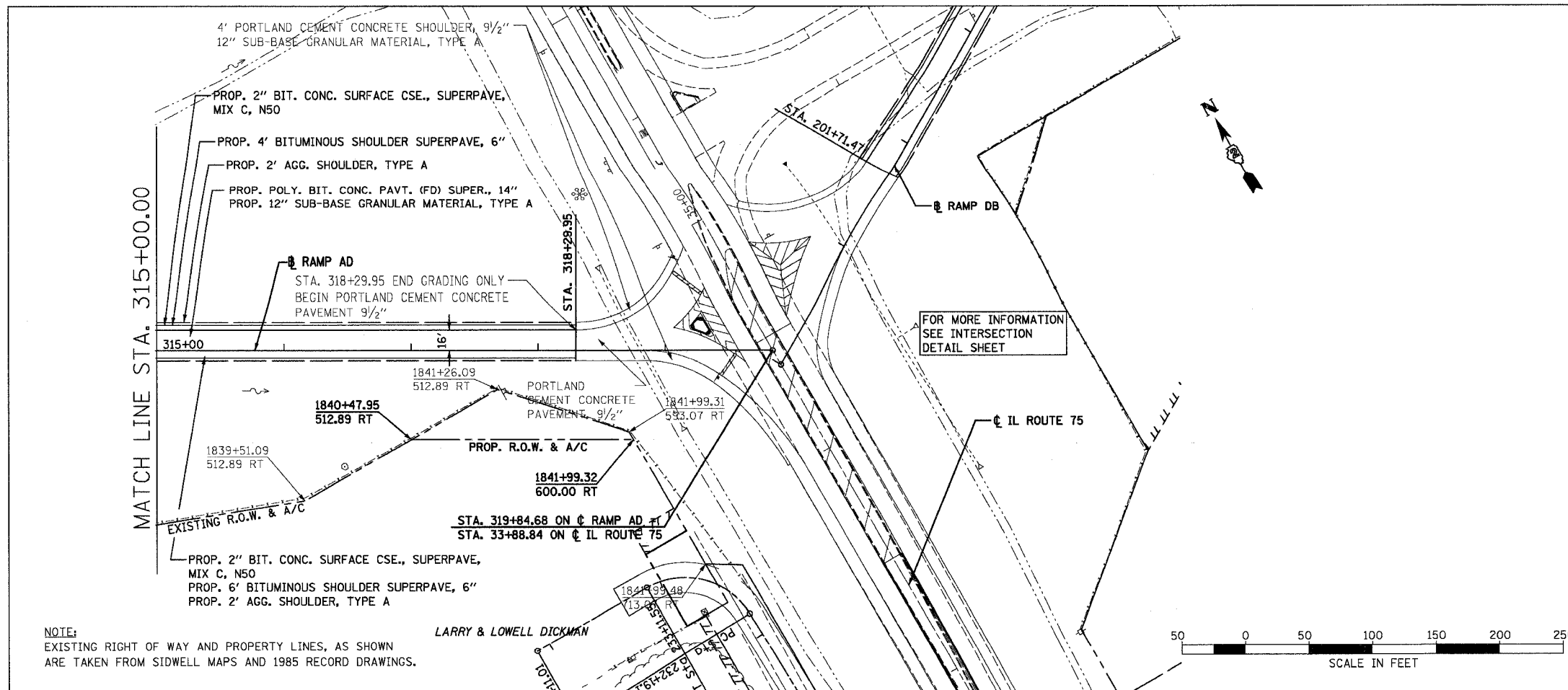


F.A.P. RTE.	SECTION	COUNTY	TOTAL SHEETS	SHEET NO.
301		STEPHENSON	290	79
STA. 315+00 TO STA. 319+84.68				
FED. ROAD DIST. NO. 2 ILLINOIS FED. AID PROJECT				

PLAN	DATE	BY
DESIGNED		
CHECKED		
APPROVED		
DATE		

PROFILE	DATE	BY
DESIGNED		
CHECKED		
APPROVED		
DATE		



NOTE:
EXISTING RIGHT OF WAY AND PROPERTY LINES, AS SHOWN
ARE TAKEN FROM SIDWELL MAPS AND 1985 RECORD DRAWINGS.

