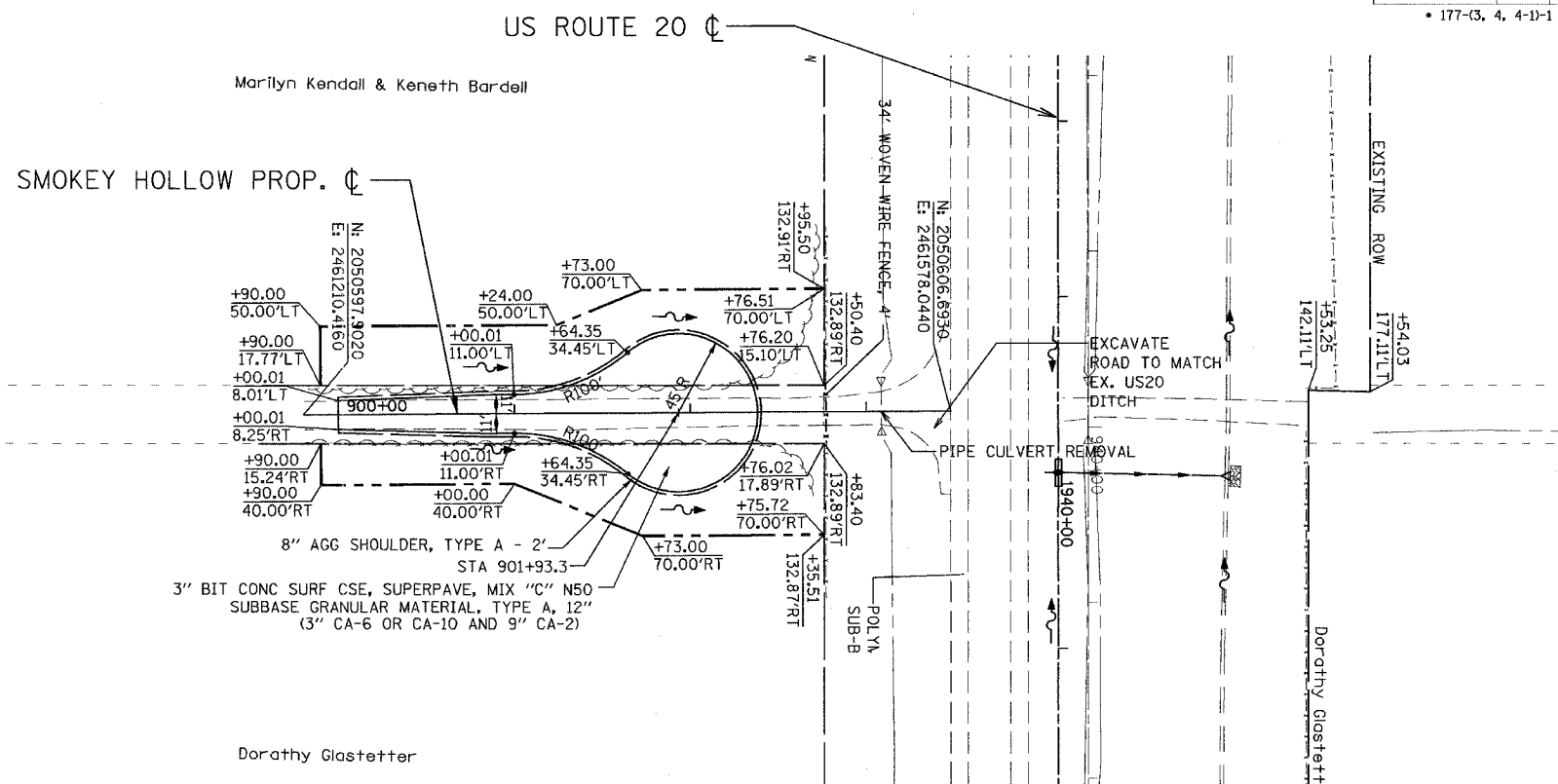


CONTRACT NO. 64577				
F.A.P. RTE.	SECTION	COUNTY	TOTAL SHEETS	SHEET NO.
301	*	STEPHENSON	290	86
STA. 899+80.00		TO STA. 903+00.00		
FED. ROAD DIST. NO. 2 ILLINOIS FED. AID PROJECT				
* 177-(3, 4, 4-1)-1				

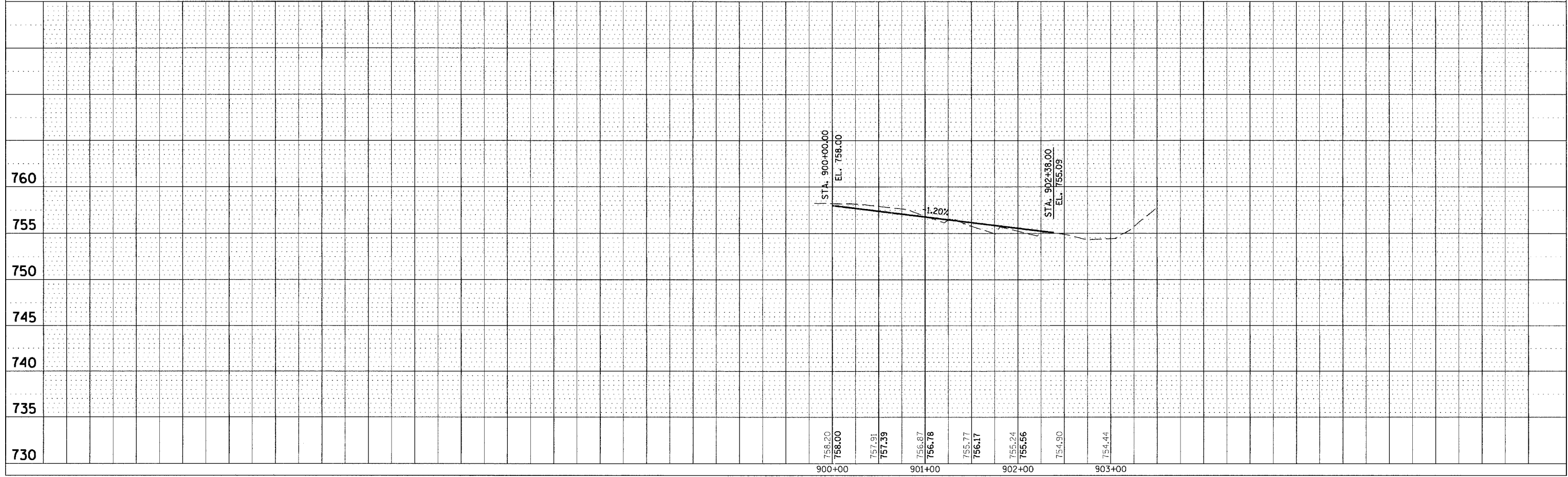
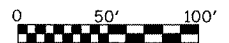
PLAN	REVISIONS	DATE
NO.	BY	
	DATE	
	BY	
	DATE	
	BY	
	DATE	

PROFILE	REVISIONS	DATE
NO.	BY	
	DATE	
	BY	
	DATE	
	BY	
	DATE	



NOTES:  
SIGNING AND DELINEATORS PER DISTRICT STANDARD 89.2

8" AGG SHOULDER, TYPE A - 2'  
STA 901+93.3  
3" BIT CONC SURF CSE, SUPERPAVE, MIX "C" N50  
SUBBASE GRANULAR MATERIAL, TYPE A, 12"  
(3" CA-6 OR CA-10 AND 9" CA-2)



**SMOKEY HOLLOW ROAD PLAN & PROFILE**