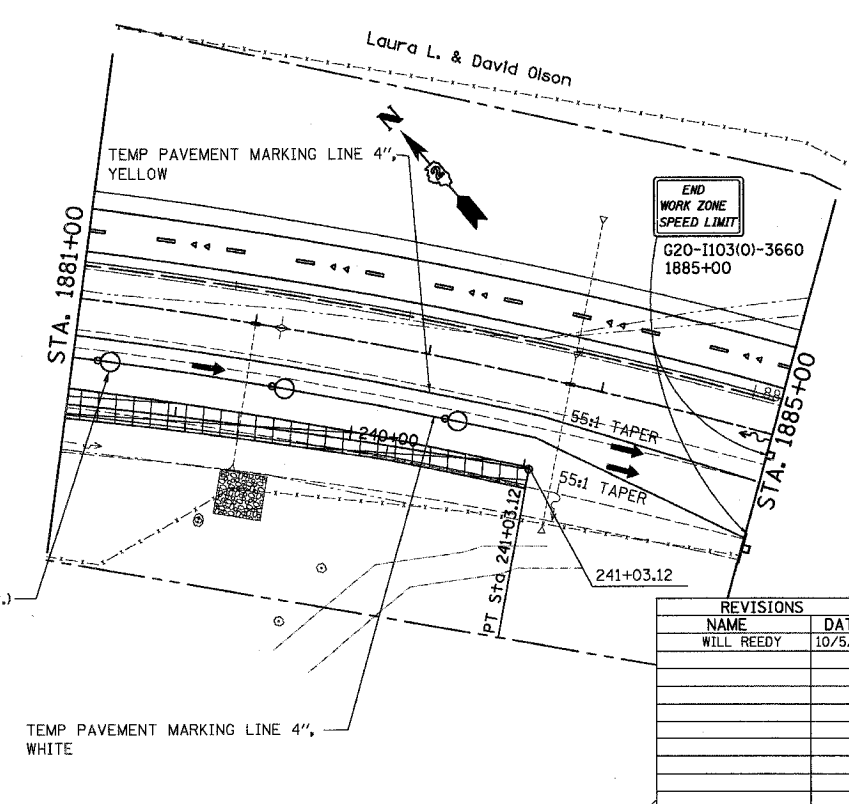
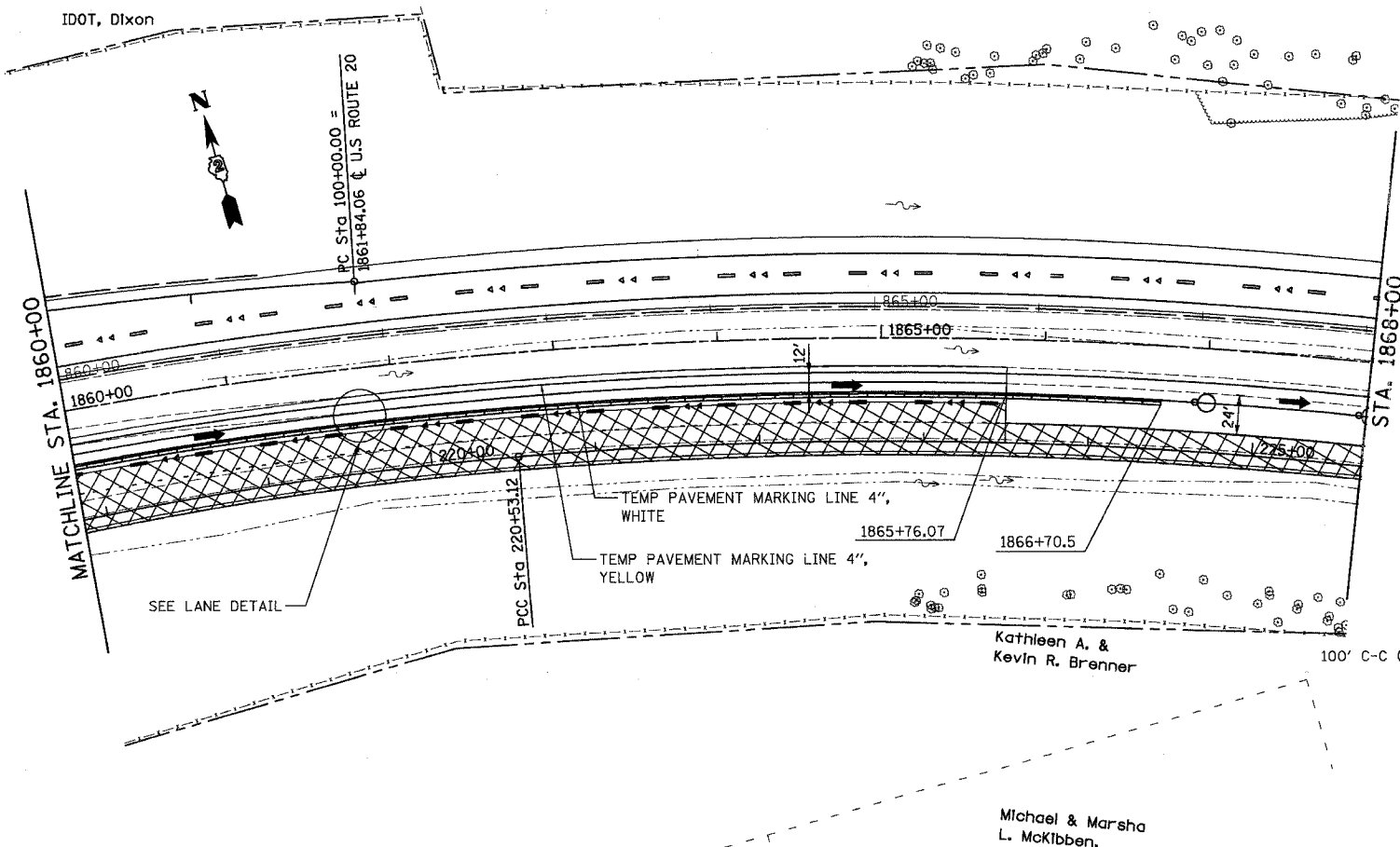
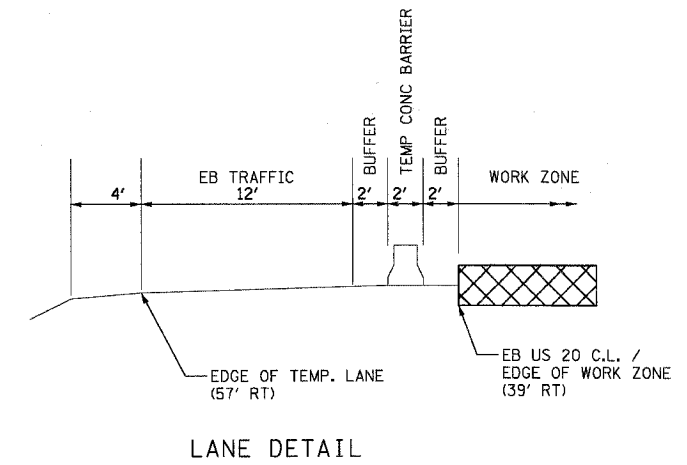
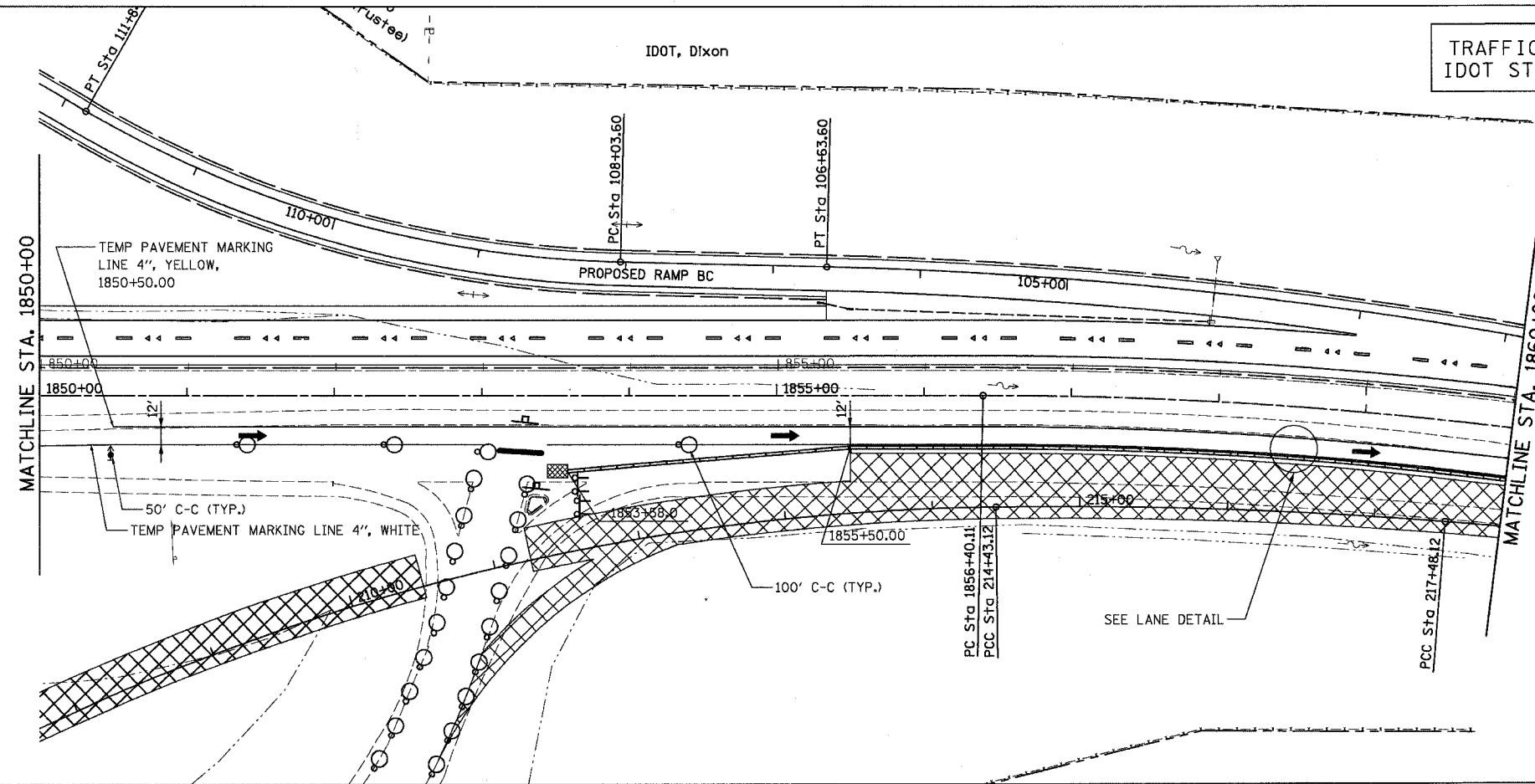


CONTRACT NO. 64577

F.A.P. RTE.	SECTION	COUNTY	TOTAL SHEETS	SHEET NO.
301		STEPHENSON	290	93
STA. 1850+00		TO STA. 1870+00		
FED. ROAD DIST. NO. 2 ILLINOIS FED. AID PROJECT				

TRAFFIC CONTROL AS PER IDOT STANDARD 701402-05



LEGEND

- WORK AREA
- TEMP. PAVEMENT
- BARRICADE TY III WITH FLASHING LIGHTS
- BARRICADE TY II
- SIGN
- VERTICAL PANEL
- BARRICADE OR DRUM WITH STEADY BURN LIGHTS
- TRAFFIC FLOW
- FLASHING LIGHTS
- DIRECTION INDICATOR BARRICADE WITH STEADY BURN MONODIRECTIONAL LIGHT
- IMPACT ATTENUATOR
- TEMPORARY CONCRETE BARRIER

REVISIONS	
NAME	DATE
WILL REEDY	10/5/05

ILLINOIS DEPARTMENT OF TRANSPORTATION
 CONSTRUCTION STAGING
 STAGE II
 U.S. ROUTE 20
 STA. 1850+00 TO STA. 1870+00
 SCALE: VERT. 1"=50'
 HORIZ. 1"=50'
 DATE 7/15/05
 DRAWN BY MBT
 CHECKED BY JC

Michael & Marsha L. McKibben.

Kathleen A. & Kevin R. Brenner