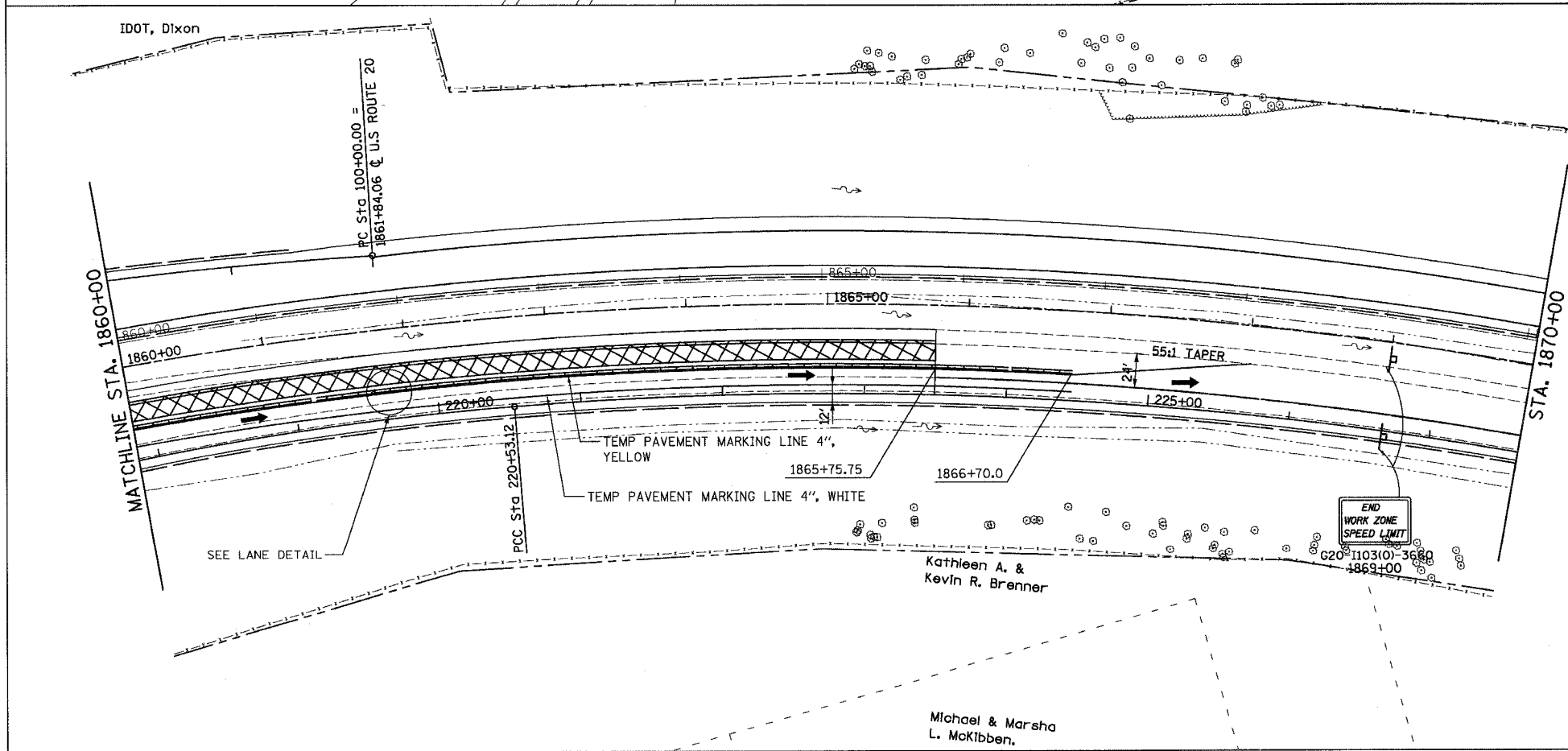
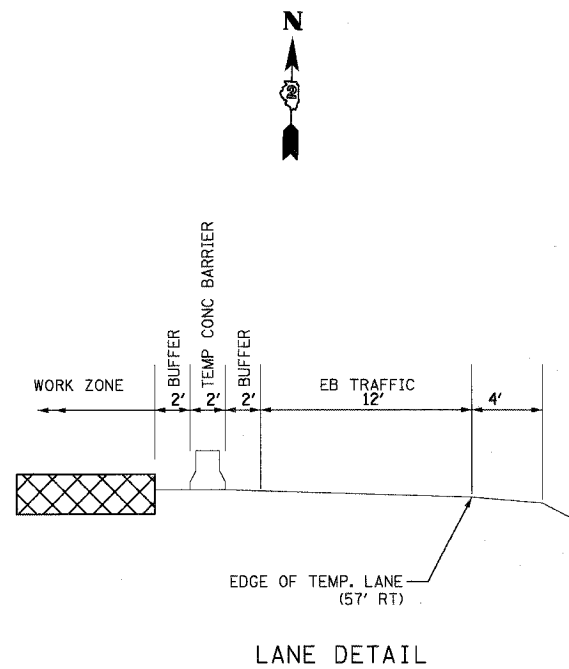
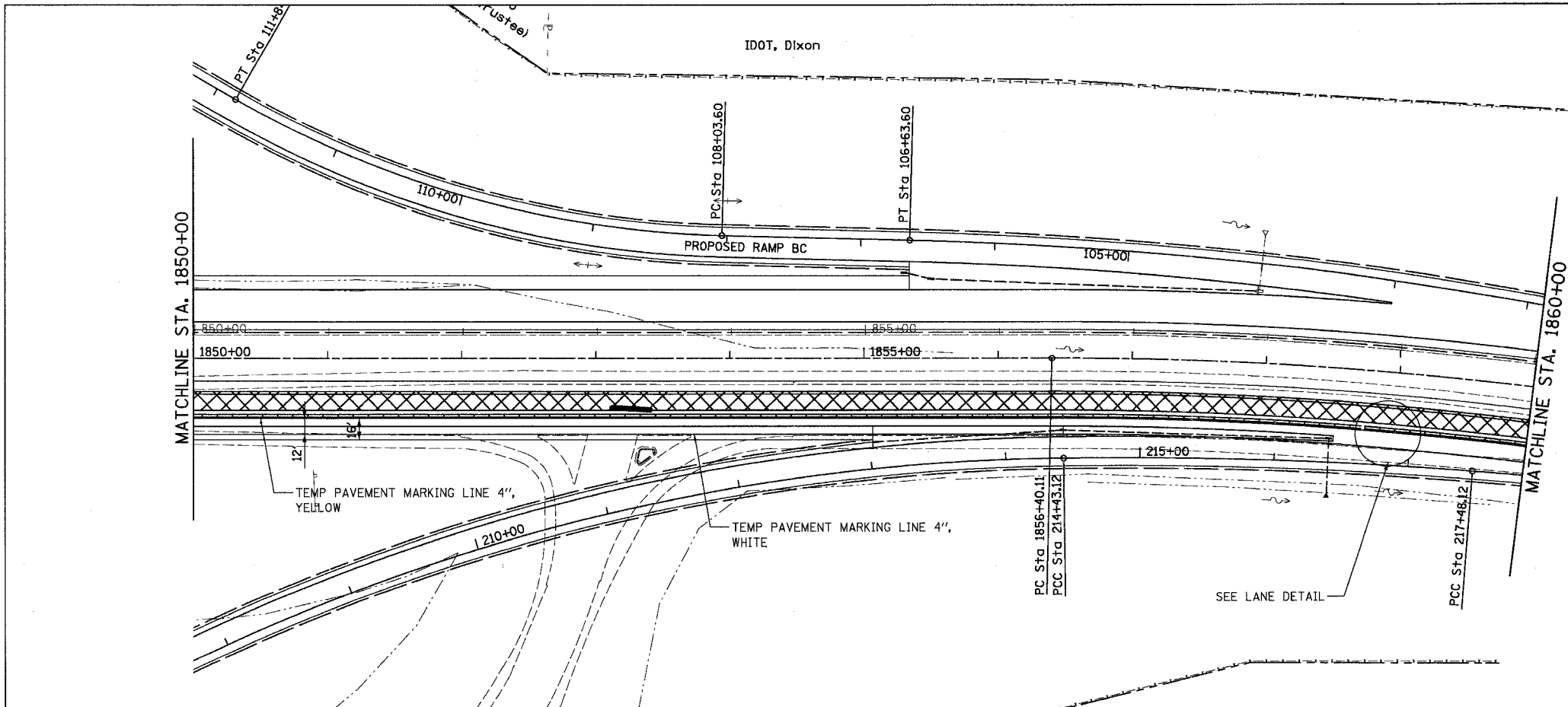


F.A.P. RTE.	SECTION	COUNTY	TOTAL SHEETS	SHEET NO.
301		STEPHENSON	290	97
STA. 1850+00 TO STA. 1870+00				
FED. ROAD DIST. NO. 2 ILLINOIS FED. AID PROJECT				



LEGEND

- WORK AREA
- TEMP. PAVEMENT
- BARRICADE TY III WITH FLASHING LIGHTS
- BARRICADE TY II
- SIGN
- VERTICAL PANEL
- BARRICADE OR DRUM WITH STEADY BURN LIGHTS
- TRAFFIC FLOW
- FLASHING LIGHTS
- DIRECTION INDICATOR BARRICADE WITH STEADY BURN MONODIRECTIONAL LIGHT
- IMPACT ATTENUATOR
- TEMPORARY CONCRETE BARRIER

REVISIONS	
NAME	DATE
WILL REEDY	10/5/05

ILLINOIS DEPARTMENT OF TRANSPORTATION
 CONSTRUCTION STAGING
 STAGE IV
 U.S. ROUTE 20
 STA. 1850+00 TO STA. 1870+00

SCALE: VERT. 1"=50'
 HORIZ. 1"=50'
 DATE 7/15/05
 DRAWN BY MBT
 CHECKED BY JC

Kathleen A. & Kevin R. Brenner

Michael & Marsha L. McKibben