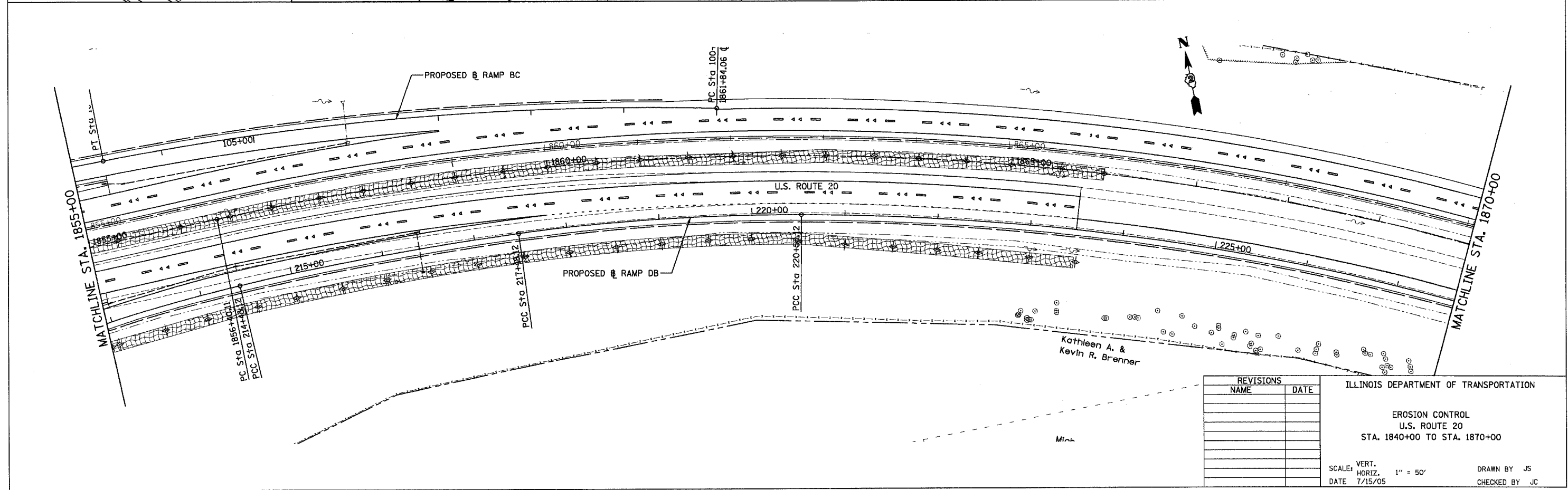
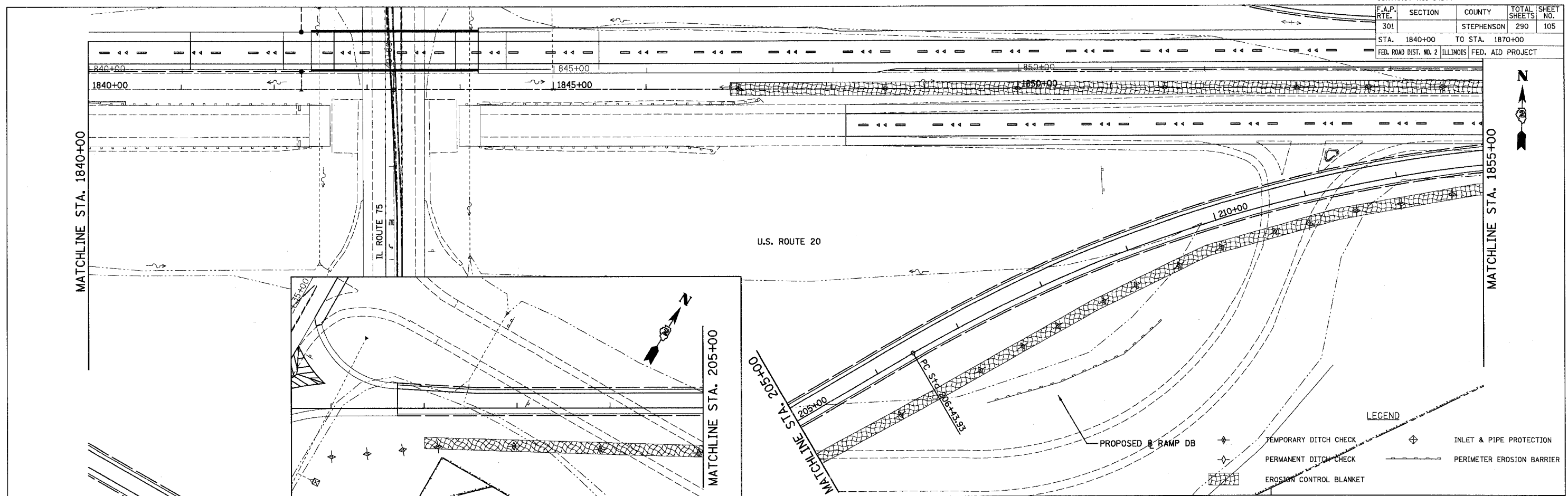


CONTRACT NO. 64577			
F.A.P. RTE.	SECTION	COUNTY	TOTAL SHEETS
301		STEPHENSON	290
STA. 1840+00		TO STA. 1870+00	
FED. ROAD DIST. NO. 2 ILLINOIS FED. AID PROJECT			



REVISIONS	
NAME	DATE

ILLINOIS DEPARTMENT OF TRANSPORTATION

EROSION CONTROL  
U.S. ROUTE 20  
STA. 1840+00 TO STA. 1870+00

SCALE: VERT. 1" = 50'  
HORIZ. 1" = 50'  
DATE 7/15/05

DRAWN BY JS  
CHECKED BY JC