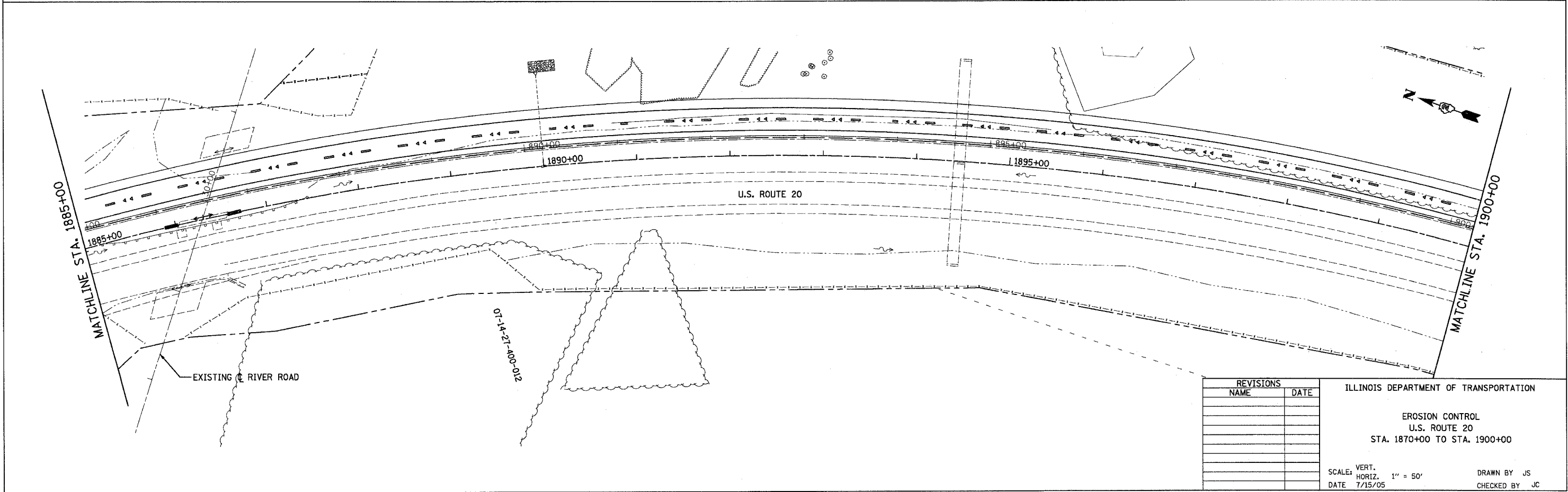
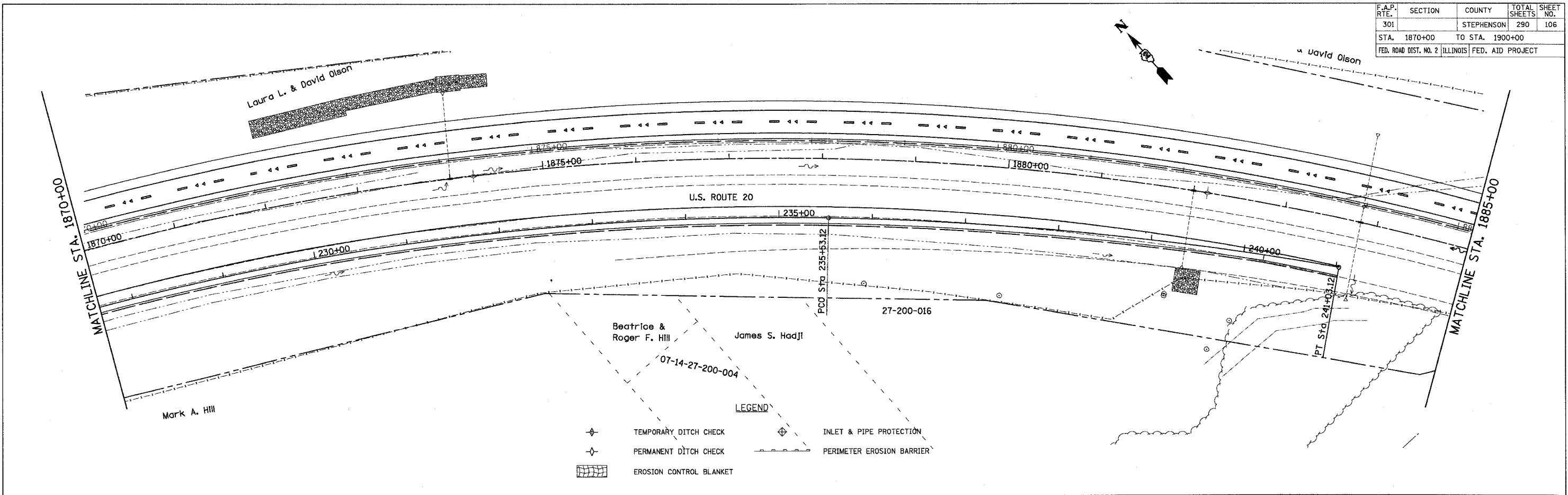


CONTRACT NO. 64577

F.A.P. RTE.	SECTION	COUNTY	TOTAL SHEETS	SHEET NO.
301		STEPHENSON	290	106
STA. 1870+00	TO STA. 1900+00			
FED. ROAD DIST. NO. 2 ILLINOIS FED. AID PROJECT				



REVISIONS	
NAME	DATE

ILLINOIS DEPARTMENT OF TRANSPORTATION

EROSION CONTROL
U.S. ROUTE 20
STA. 1870+00 TO STA. 1900+00

SCALE: VERT. 1" = 50'
HORIZ. 1" = 50'
DATE 7/15/05

DRAWN BY JS
CHECKED BY JC