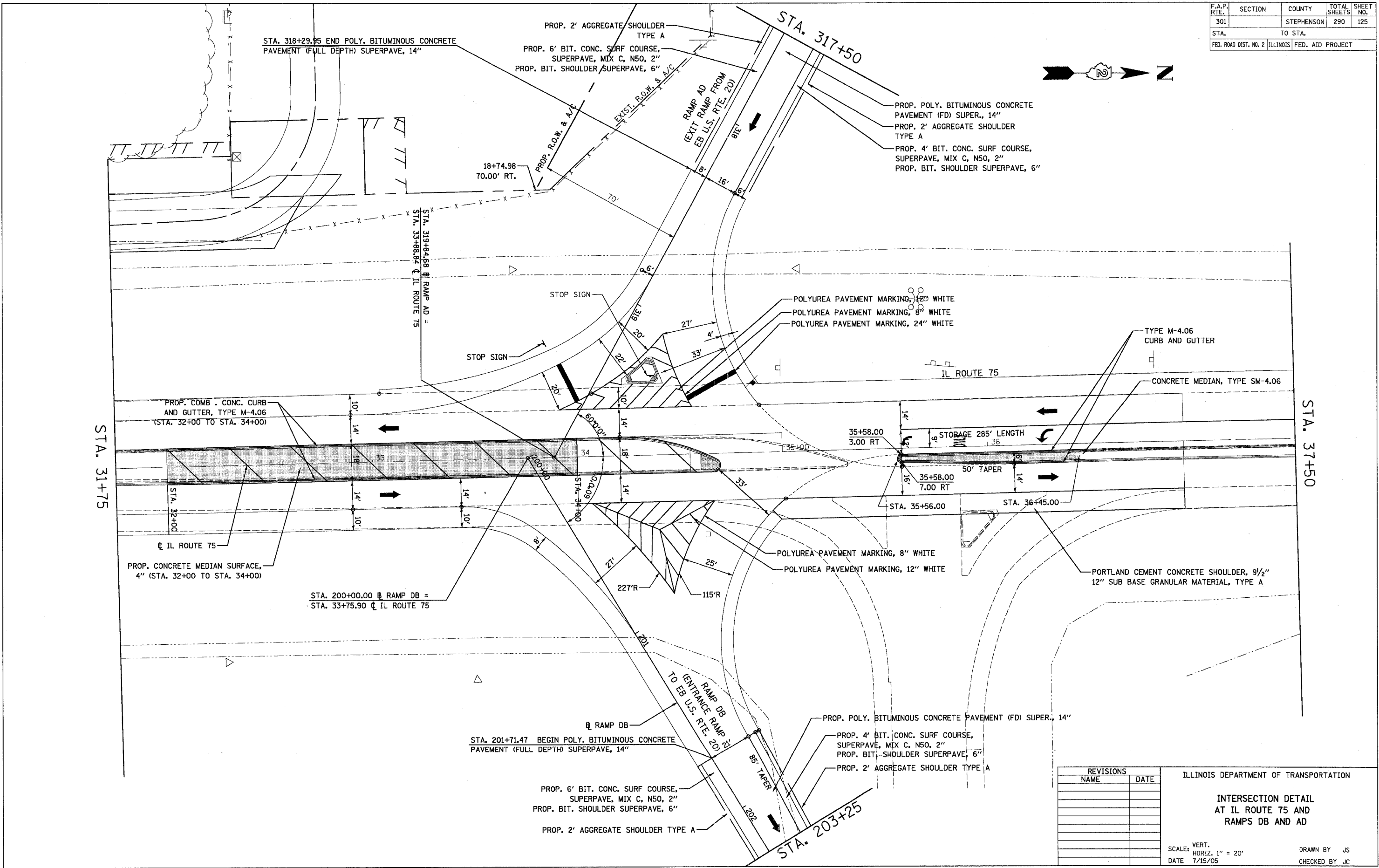
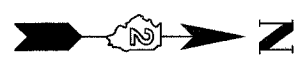


F.A.P. RTE.	SECTION	COUNTY	TOTAL SHEETS	SHEET NO.
301		STEPHENSON	290	125
STA. TO STA.			FED. ROAD DIST. NO. 2 ILLINOIS FED. AID PROJECT	



REVISIONS	
NAME	DATE

ILLINOIS DEPARTMENT OF TRANSPORTATION

**INTERSECTION DETAIL  
AT IL ROUTE 75 AND  
RAMPS DB AND AD**

SCALE: VERT. 1" = 20'  
HORIZ. 1" = 20'

DATE 7/15/05

DRAWN BY JS  
CHECKED BY JC