

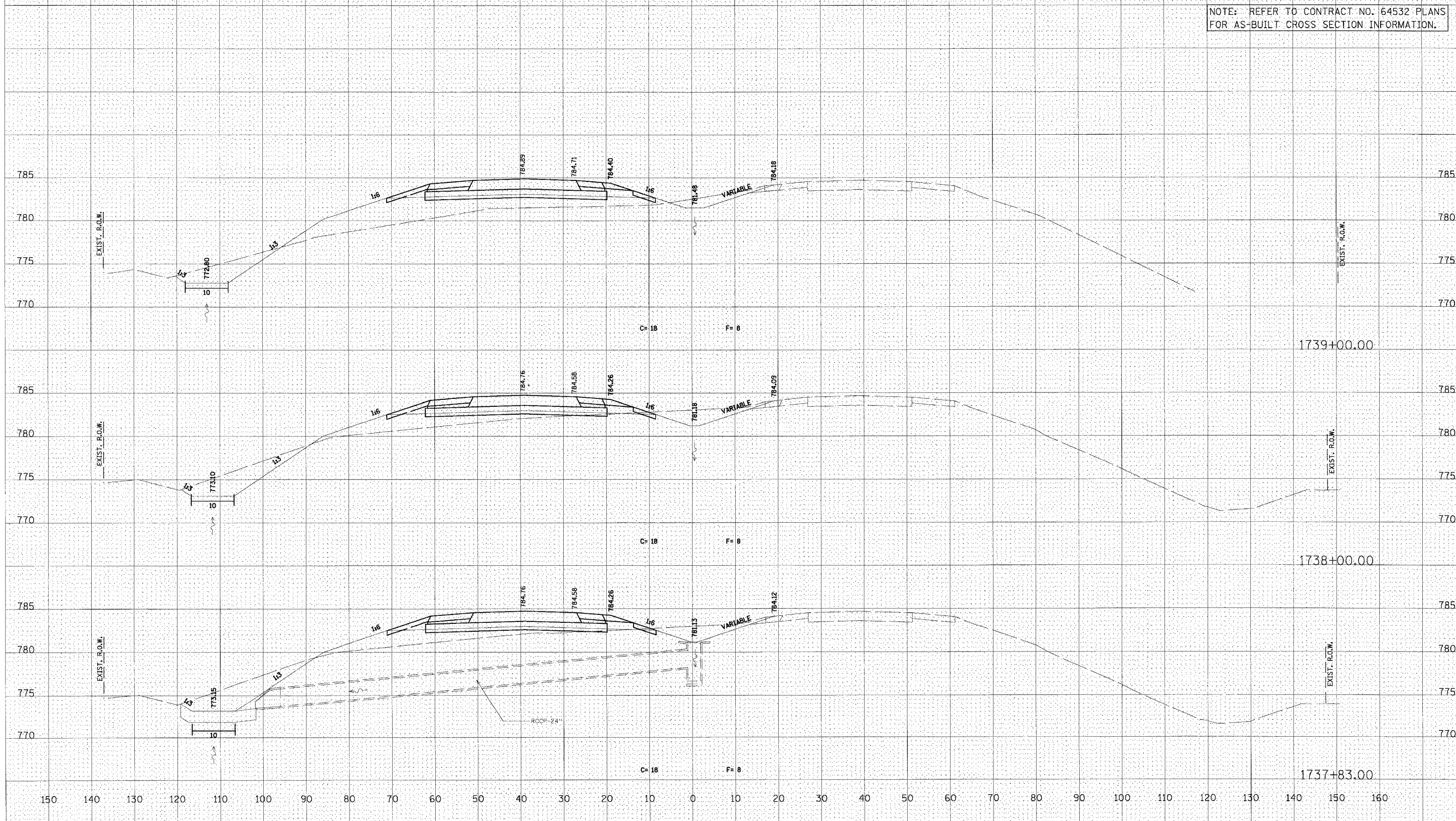
P.A. #	SECTION	COUNTY	TOTAL SHEETS	SHEET NO
301		**	290	158
STA.	TO STA.			
FED. ROAD DIST. NO.	ILLINOIS	FED. AID PROJECT		

150 140 130 120 110 100 90 80 70 60 50 40 30 20 10 0 10 20 30 40 50 60 70 80 90 100 110 120 130 140 150 160 STEPHENSON

NOTE: REFER TO CONTRACT NO. 64532 PLANS FOR AS-BUILT CROSS SECTION INFORMATION.

FINAL SURVEY	SURVEYED	DATE
NOTE BOOK	PLOTTED	BY
NO.	TEMPLATE	
	AREAS CHECKED	

ORIGINAL SURVEY	SURVEYED	DATE
NOTE BOOK	PLOTTED	BY
NO.	TEMPLATE	
	AREAS CHECKED	



U.S. ROUTE 20