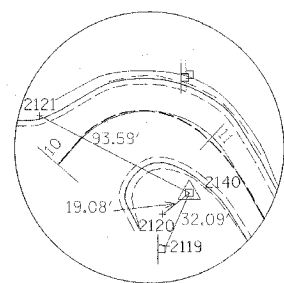
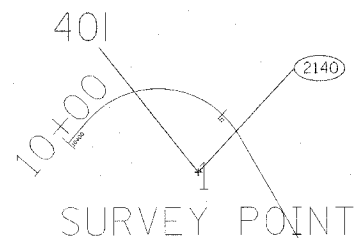
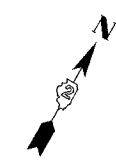
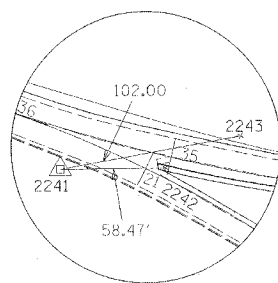


F.A.P. RTE.	SECTION	COUNTY	TOTAL SHEETS	SHEET NO.
301	28-50-M	JO DAVIESS	27	8
STA.		TO STA.		
FED. ROAD DIST. NO.		ILLINOIS FED. AID PROJECT		

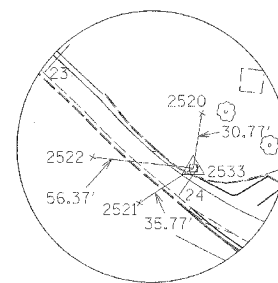
EXISTING HORIZONTAL AND VERTICAL CONTROL



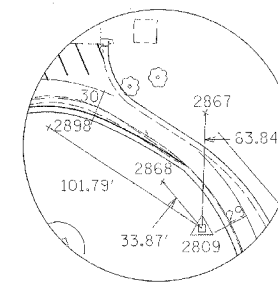
HORIZONTAL CONTROL POINT NO. 2140



HORIZONTAL CONTROL POINT NO. 2241



HORIZONTAL CONTROL POINT NO. 2533



HORIZONTAL CONTROL POINT NO. 2809

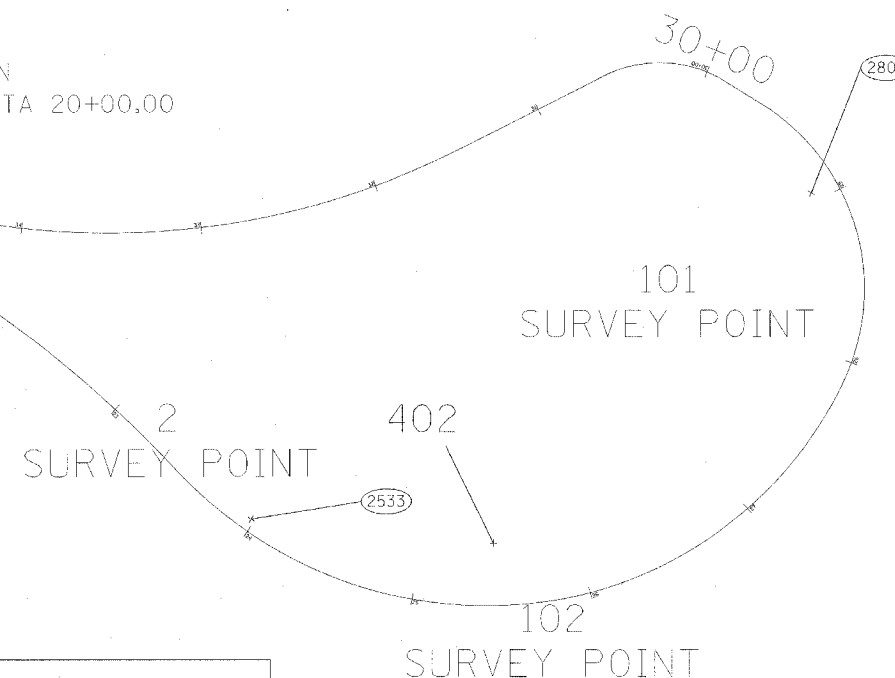
REFERENCE TIES				
POINT	CHAIN	STATION	OFFSET	DESCRIPTION
2119	OUTLOOKDR	11+40.08	32.09' RT	SIGN
2120	OUTLOOKDR	11+23.94	19.08' RT	SIGN
2121	OUTLOOKDR	10+13.76	93.59' LT	SIGN
2242	LOOP	21+10.06	58.47' LT	SIGN
2243	LOOP	34+64.01	102.00' LT	SIGN
2520	LOOP	23+82.42	30.77' LT	TREE/SHRUB
2521	LOOP	23+87.36	35.77' RT	TREE/SHRUB
2522	LOOP	23+53.02	56.37' RT	TREE/SHRUB
2867	LOOP	29+50.56	63.84' RT	TREE/SHRUB
2868	LOOP	29+44.74	33.87' LT	TREE/SHRUB
2898	LOOP	30+27.78	101.79' LT	LIGHT POLE

STATION EQUATION
 $STA\ 18+29.54 = STA\ 20+00.00$

HORIZONTAL CONTROL POINTS							
POINT	NORTHING	EASTING	ELEVATION	CHAIN	STATION	OFFSET	DESCRIPTION
2140	2064557.0820	2266994.9480	991.1200	OUTLOOKDR	11+21.21	28.7968 RT	LIGHT POLE
2241	2064071.9260	2267593.8540	974.3900	LOOP	20+56.59	19.889 RT	LIGHT POLE
2533	2063899.1600	2267881.5300	992.2400	LOOP	23+98.18	6.7235 LT	SIGN
2809	2064079.9700	2268192.9800	977.5100	LOOP	29+05.80	15.0083 LT	MANHOLE

BENCH MARKS							
POINT	NORTHING	EASTING	ELEVATION	CHAIN	STATION	OFFSET	DESCRIPTION
401	2064556.4810	2266994.2380	991.0227	OUTLOOKDR	11+21.38	29.7119 RT	CHISELED SQUARE (POLE FOUNDATION)
402	2063885.7100	2268016.1600	993.4335	LOOP	25+46.36	35.2175 LT	CHISELED SQUARE (POLE FOUNDATION)

MAIN CONTROL POINTS							
POINT	NORTHING	EASTING	ELEVATION	CHAIN	STATION	OFFSET	DESCRIPTION
1	2064541.8665	2266997.5868	990.4067	OUTLOOKDR	11+35.72	34.0922 RT	PIN & CAP SE OF LIGHT POLE AT ENTRANCE OF LOOKOUT TOWER
2	2063942.9014	2267834.7668	988.9565	LOOP	23+32.77	7.7559 LT	PIN & CAP NORTH OF WEST END OF C&G ON NORTH SIDE OF PAVED DRIVE
101	2064019.5900	2268111.1600	989.0436	LOOP	27+82.67	108.9138 LT	SURVEY POINT
102	2063830.8200	2268047.1500	990.8811	LOOP	25+73.53	22.1526 RT	SURVEY POINT



PLOT DATE = 8/15/05
 FILE NAME = 8/15/05
 PLOT SCALE = 1"=40'
 REFERENCE = REF

REVISIONS	
NAME	DATE

ILLINOIS DEPARTMENT OF TRANSPORTATION

EXISTING HORIZONTAL AND VERTICAL CONTROL

SCALE: VERT. 1"=40'
 HORIZ. 1"=40'

DATE: 8/15/05

DRAWN BY: SAM
 CHECKED BY: RJA