

F.A.P. RTE.	SECTION	COUNTY	TOTAL SHEETS	SHEET NO.
22	6M & TS	HENRY	257	1

+3
= 260

STATE OF ILLINOIS
DEPARTMENT OF TRANSPORTATION
DIVISION OF HIGHWAYS

**PROPOSED
HIGHWAY PLANS**

FAP 22 (IL 78)
SECTION 6M & TS
PROJECT NO. F-22 (064)
HENRY COUNTY

SEE PAGE 2 FOR INDEX OF SHEETS

DESIGN DESIGNATION
FAP 22 SECTION 6M&TS - 1900(24) OTHER PRINCIPAL ARTERIAL - 5.51 (PCC-20)
ADT - SECTION 6M&TS - 5400 (2004) 6.0% TRUCKS
DESIGN SPEED = 30 MPH



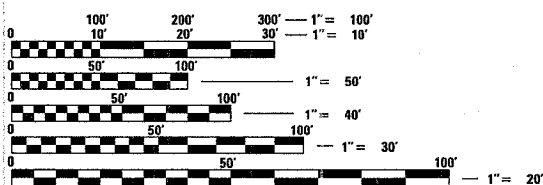
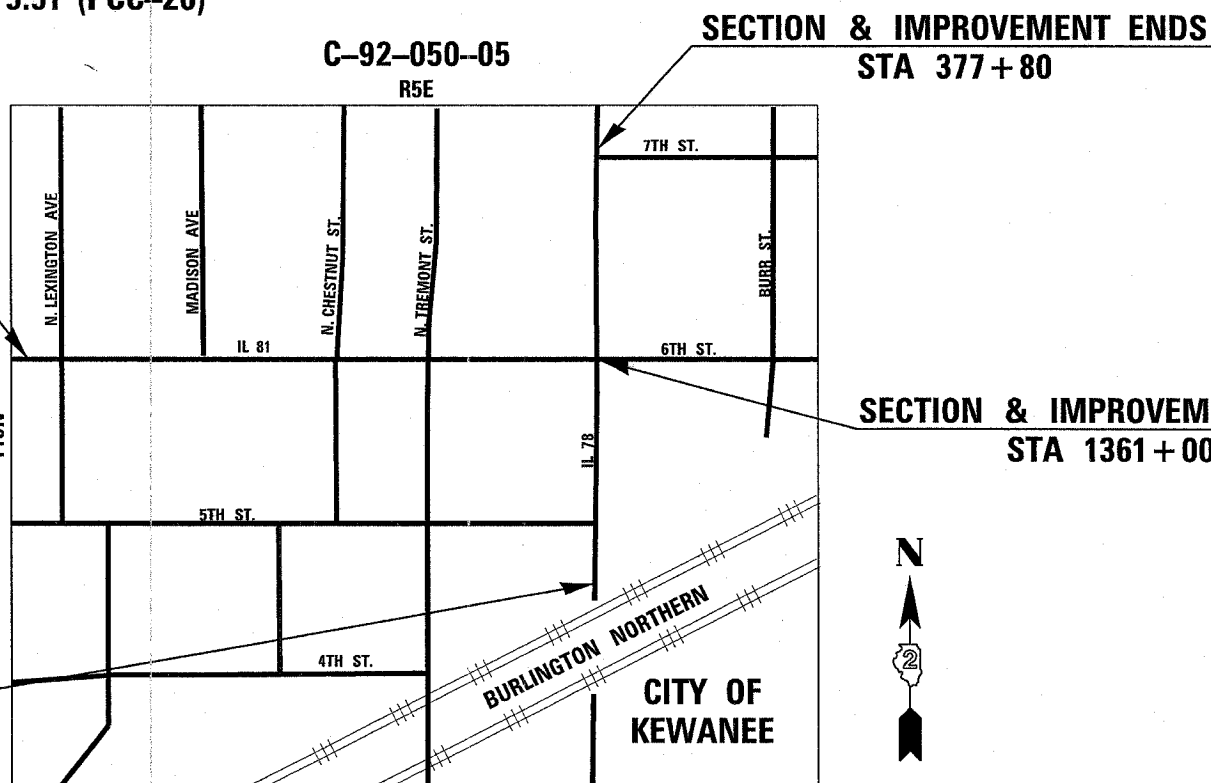
D-92-168-00

PROJECT ENGINEER: ROBERT WAGNER

SQUAD LEADER: KEITH GENGLER (815) 284-5924

IMPROVEMENT BEGINS STA 1344+90
SECTION BEGINS STA. 1345+50

IMPROVEMENT BEGINS 364+87
SECTION BEGINS STA 365+35.44



NET LENGTH OF PROJECT = 2795 LIN. FT = .53 MI.
GROSS LENGTH = 2795 LIN. FT. = .53 MI.

FULL SIZE PLANS HAVE BEEN PREPARED USING STANDARD ENGINEERING SCALES. REDUCED SIZED PLANS WILL NOT CONFORM TO STANDARD SCALES. IN MAKING MEASUREMENTS ON REDUCED PLANS, THE ABOVE SCALES MAY BE USED.

J.U.L.I.E.
JOINT UTILITY LOCATION INFORMATION FOR EXCAVATION
1-800-892-0123

KEWANEE TOWNSHIP 28.33
CONTRACT NO. 64640

SECTION & IMPROVEMENT ENDS
STA 1361+00

STATE OF ILLINOIS
DEPARTMENT OF TRANSPORTATION
DIVISION OF HIGHWAYS

SUBMITTED October 27, 20 05

Gregory L. Mowbray
DEPUTY DIRECTOR OF HIGHWAYS, REGION ENGINEER

December 9, 20 05
Mike Hine
ENGINEER OF DESIGN AND ENVIRONMENT

December 9, 20 05
Eric Harms
DEPUTY DIRECTOR OF HIGHWAYS, CHIEF ENGINEER

PRINTED BY THE AUTHORITY
OF THE STATE OF ILLINOIS

DISTRICT 2
DIXON