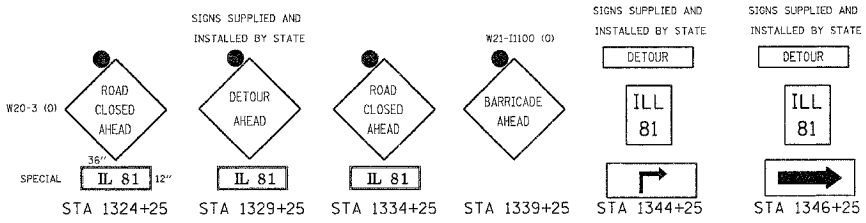
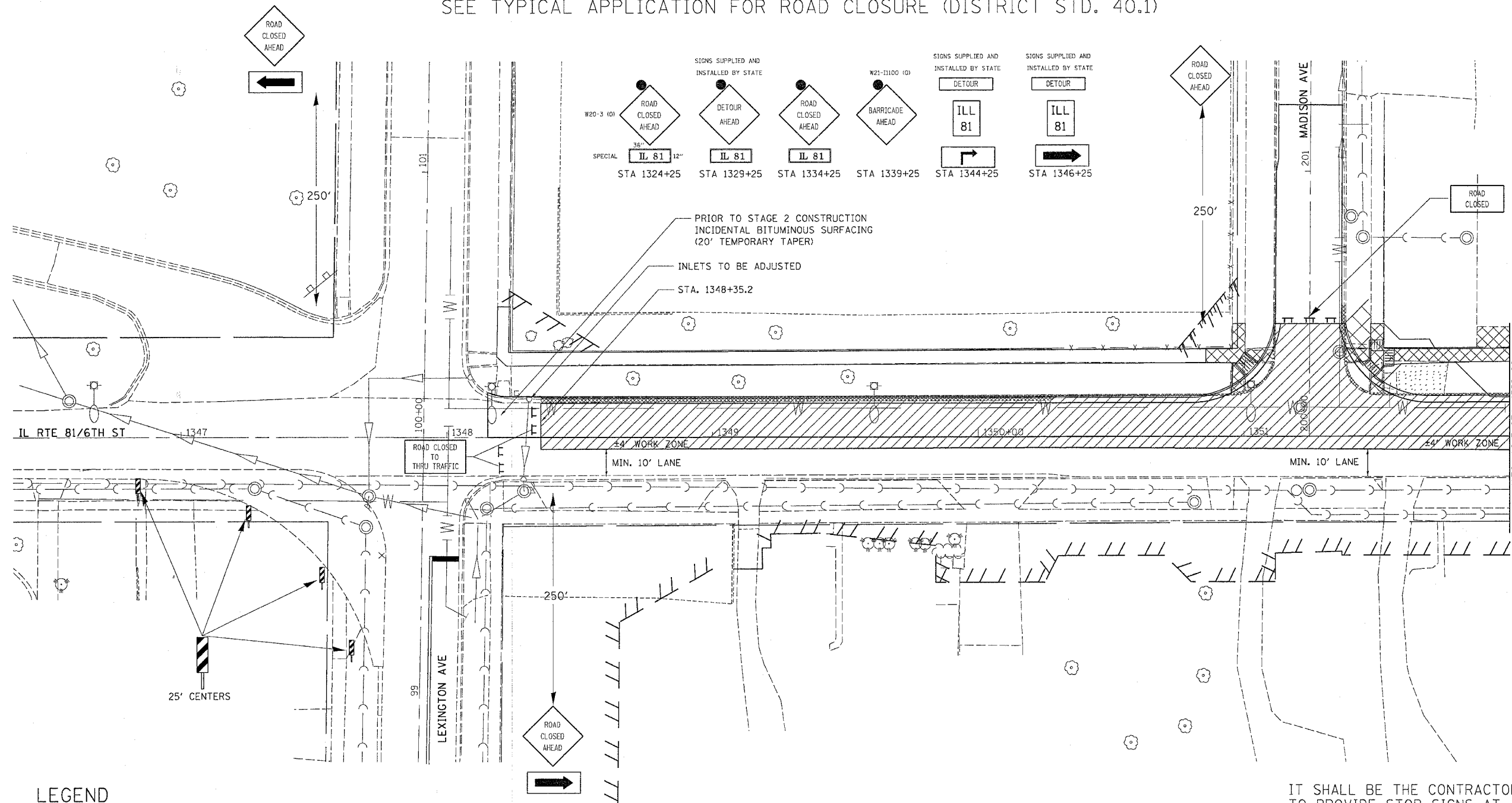


F.A. RTE.	SECTION	COUNTY	TOTAL SHEETS	SHEET NO.
22	6M & TS	HENRY	257	38
STA.		TO STA.		
FED. ROAD DIST. NO.	ILLINOIS	FED. AID PROJECT		

# STAGE 1

SEE TYPICAL APPLICATION FOR ROAD CLOSURE (DISTRICT STD. 40.1)



PRIOR TO STAGE 2 CONSTRUCTION  
INCIDENTAL BITUMINOUS SURFACING  
(20' TEMPORARY TAPER)  
INLETS TO BE ADJUSTED  
STA. 1348+35.2

**LEGEND**

	CLASS B PATCH
	PAVEMENT REMOVAL
	DRIVEWAY PAVEMENT REMOVAL
	COMB. CURB & GUTTER REMOVAL
	SIDEWALK REMOVAL
	TREE REMOVAL

**TRAFFIC CONTROL LEGEND**

	DRUM WITH LIGHT
	TYPE III BARRICADE WITH FLASHERS

**SEQUENCE OF OPERATION**

1. REMOVE CONFLICTING PAVEMENT MARKINGS AND INSTALL PAVEMENT MARKING TAPE, TYPE III FOR DETOUR.
2. INSTALL ROAD CLOSURE SIGNING.

IT SHALL BE THE CONTRACTORS RESPONSIBILITY TO PROVIDE STOP SIGNS AT ALL INTERSECTIONS WHERE APPLICABLE.

ALL DROPOFFS EXCEEDING 3" SHALL CONFORM TO ARTICLE 701.04(b)(1).

**REVISIONS**

NAME	DATE

ILLINOIS DEPARTMENT OF TRANSPORTATION

SCALE: VERT. \_\_\_\_\_  
HORIZ. \_\_\_\_\_  
DATE \_\_\_\_\_

DRAWN BY \_\_\_\_\_  
CHECKED BY \_\_\_\_\_

PLOT DATE = Thu, Oct 27 10:30:29 2005  
FILE NAME = c:\pvc\pvc\as\2316500\1616500.dgn  
PLOT SCALE = 28.20000 / IN.  
REFERENCE = #REF#