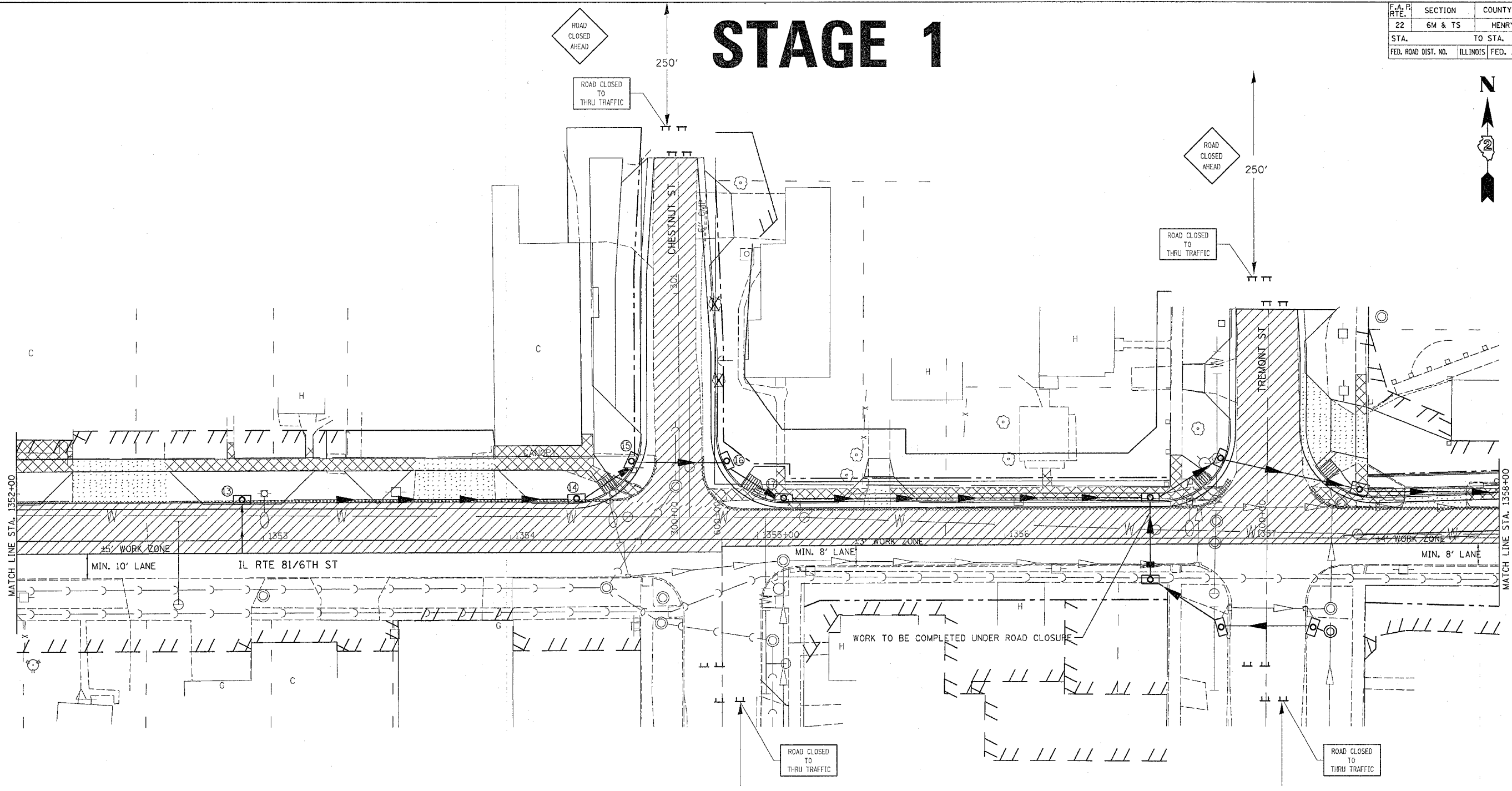


| | | | | |
|---------------------|----------|------------------|--------------|-----------|
| F.A. RTE. | SECTION | COUNTY | TOTAL SHEETS | SHEET NO. |
| 22 | 6M & TS | HENRY | 257 | 39 |
| STA. | | TO STA. | | |
| FED. ROAD DIST. NO. | ILLINOIS | FED. AID PROJECT | | |

STAGE 1



LEGEND

| | |
|--|-----------------------------|
| | CLASS B PATCH |
| | PAVEMENT REMOVAL |
| | DRIVEWAY PAVEMENT REMOVAL |
| | COMB. CURB & GUTTER REMOVAL |
| | SIDEWALK REMOVAL |
| | TREE REMOVAL |

TRAFFIC CONTROL LEGEND

| | |
|--|----------------------------------|
| | DRUM WITH LIGHT |
| | TYPE III BARRICADE WITH FLASHERS |

IT SHALL BE THE CONTRACTORS RESPONSIBILITY TO PROVIDE STOP SIGNS AT ALL INTERSECTIONS WHERE APPLICABLE.

SEE TYPICAL APPLICATION FOR ROAD CLOSURE (DISTRICT STANDARD 40.1)

ALL DROPOFFS EXCEEDING 3" SHALL CONFORM TO ARTICLE 701.04(b)(1).

| REVISIONS | |
|-----------|------|
| NAME | DATE |
| | |
| | |
| | |
| | |
| | |
| | |
| | |
| | |
| | |
| | |

ILLINOIS DEPARTMENT OF TRANSPORTATION

SCALE: VERT. HORIZ. DATE

DRAWN BY CHECKED BY

STAGING, TRAFFIC CONTROL, AND EROSION CONTROL DETAILS

PLOT DATE = Thu Oct 27 16:38:23 2005
 FILE NAME = c:\work\proj\1352\13521680.dwg
 PLOT SCALE = 1/8" = 1'-0"
 REFERENCE = SEE #