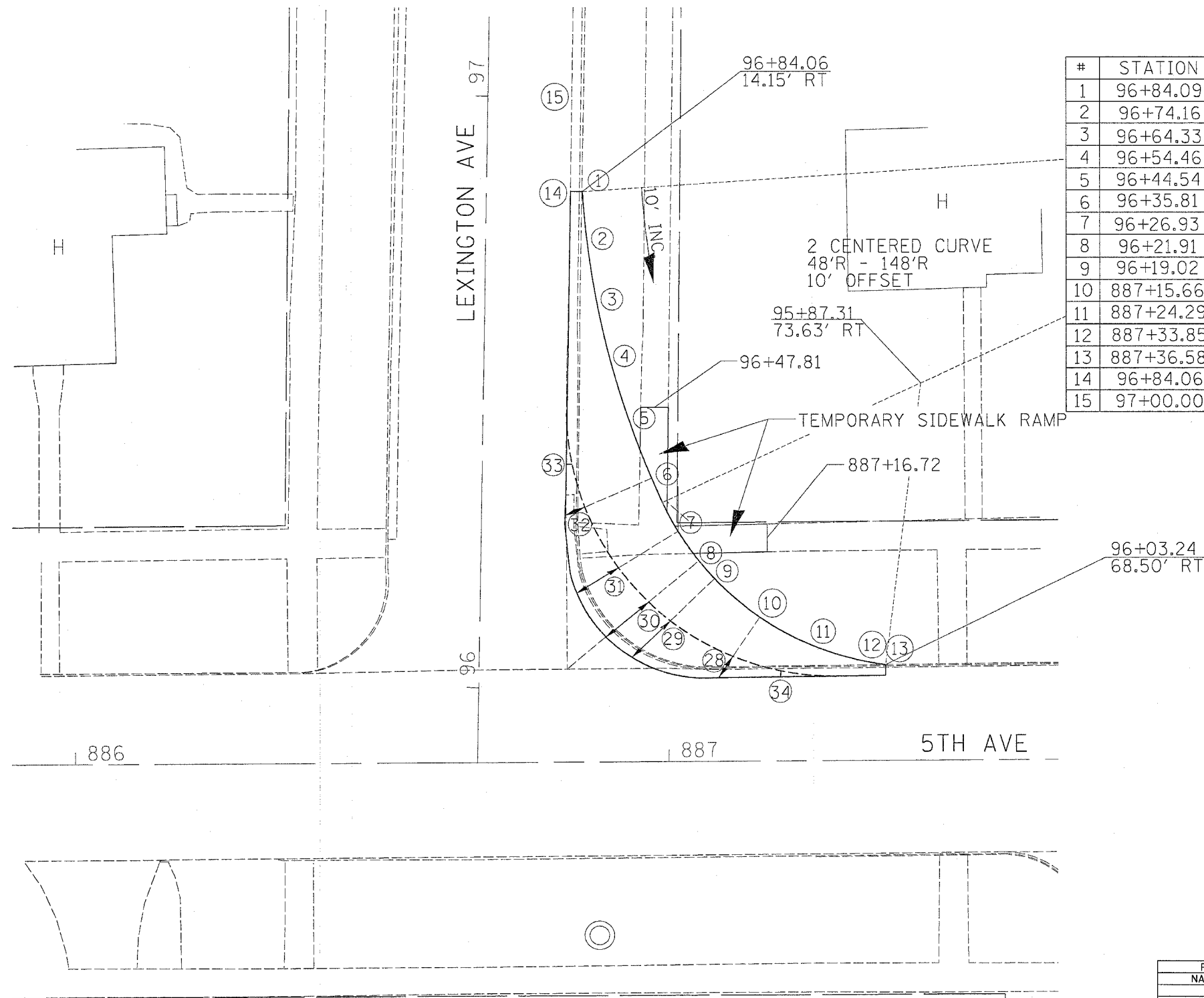


TEMPORARY RETURN FOR DETOUR

CONTRACT NO. 64640

F.A.P. RTE.	SECTION	COUNTY	TOTAL SHEETS	SHEET NO.
22	6M & TS	HENRY	257	56
STA.		TO STA.		
FED. ROAD DIST. NO.		ILLINOIS	FED. AID PROJECT	



#	STATION	OFFSET	ELEVATION	REMARKS
1	96+84.09	16.15' RT	846.96	TEMPORARY
2	96+74.16	17.31' RT	847.27	TEMPORARY
3	96+64.33	19.14' RT	847.53	TEMPORARY
4	96+54.46	21.67' RT	847.72	TEMPORARY
5	96+44.54	24.98' RT	847.92	TEMPORARY
6	96+35.81	28.70' RT	848.02	TEMPORARY
7	96+26.93	33.13' RT	848.16	TEMPORARY
8	96+21.91	36.80' RT	848.29	TEMPORARY
9	96+19.02	39.42' RT	848.39	TEMPORARY
10	887+15.66	24.14' LT	848.66	TEMPORARY
11	887+24.29	19.45' LT	848.83	TEMPORARY
12	887+33.85	16.58' LT	849.00	TEMPORARY
13	887+36.58	16.14' LT	849.01	TEMPORARY
14	96+84.06	14.15' RT	846.94	EX. ELEV.
15	97+00.00	14.13' RT	846.46	EX. ELEV.

NOT TO SCALE

REVISIONS	
NAME	DATE

ILLINOIS DEPARTMENT OF TRANSPORTATION

SCALE: VERT.
HORIZ.
DATE

DRAWN BY
CHECKED BY

TEMPORARY RETURN FOR DETOUR

PLOT DATE : Thu Oct 27 10:25:43 2005
FILE NAME : c:\p\projects\216800\216800.dwg
PLOT SCALE : 1/8" = 1'-0"
REFERENCE : 4/2/05