

LEXINGTON AVE

FA P RTE.	SECTION	COUNTY	TOTAL SHEETS	SHEET NO.
22	6M&T5	HENRY	257	73
STA.		TO STA.		
FED. ROAD DIST. NO.		ILLINOIS	FED. AID PROJECT	

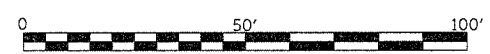
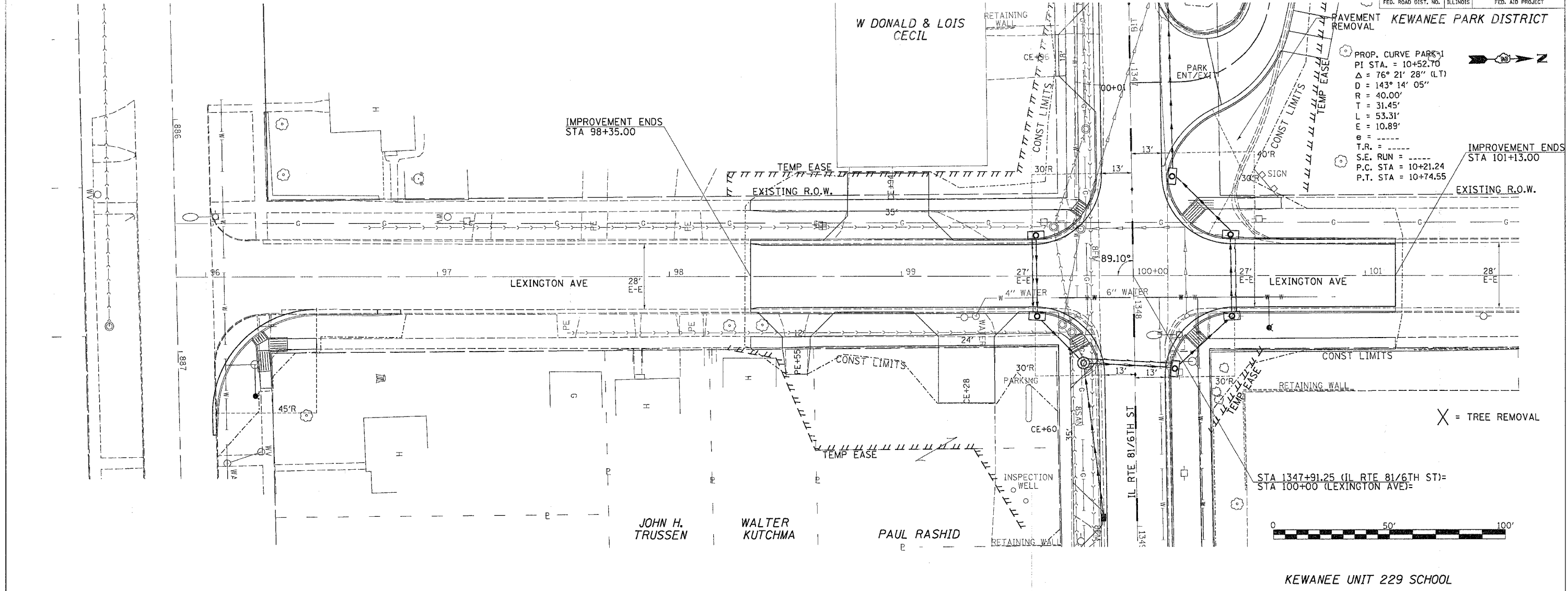
KEWANEE PARK DISTRICT
PAVEMENT REMOVAL

PROP. CURVE PAV-1
 PI STA. = 10+52.70
 $\Delta = 76^\circ 21' 28''$ (LT)
 $D = 143^\circ 14' 05''$
 $R = 40.00'$
 $T = 31.45'$
 $L = 53.31'$
 $E = 10.89'$
 $e =$
 $T.R. =$
 $S.E. RUN =$
 $P.C. STA = 10+21.24$
 $P.T. STA = 10+74.55$

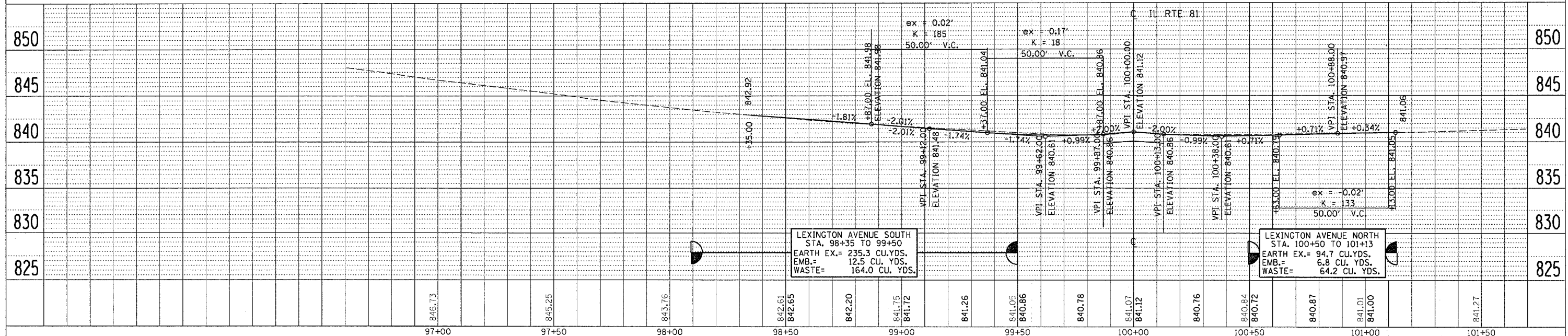


PLAN	DATE
BY	
CHECKED	
DATE	

PROFILE	DATE
BY	
CHECKED	
DATE	



KEWANEE UNIT 229 SCHOOL



PLAN AND PROFILE LEXINGTON AVE
 IL RTE 81