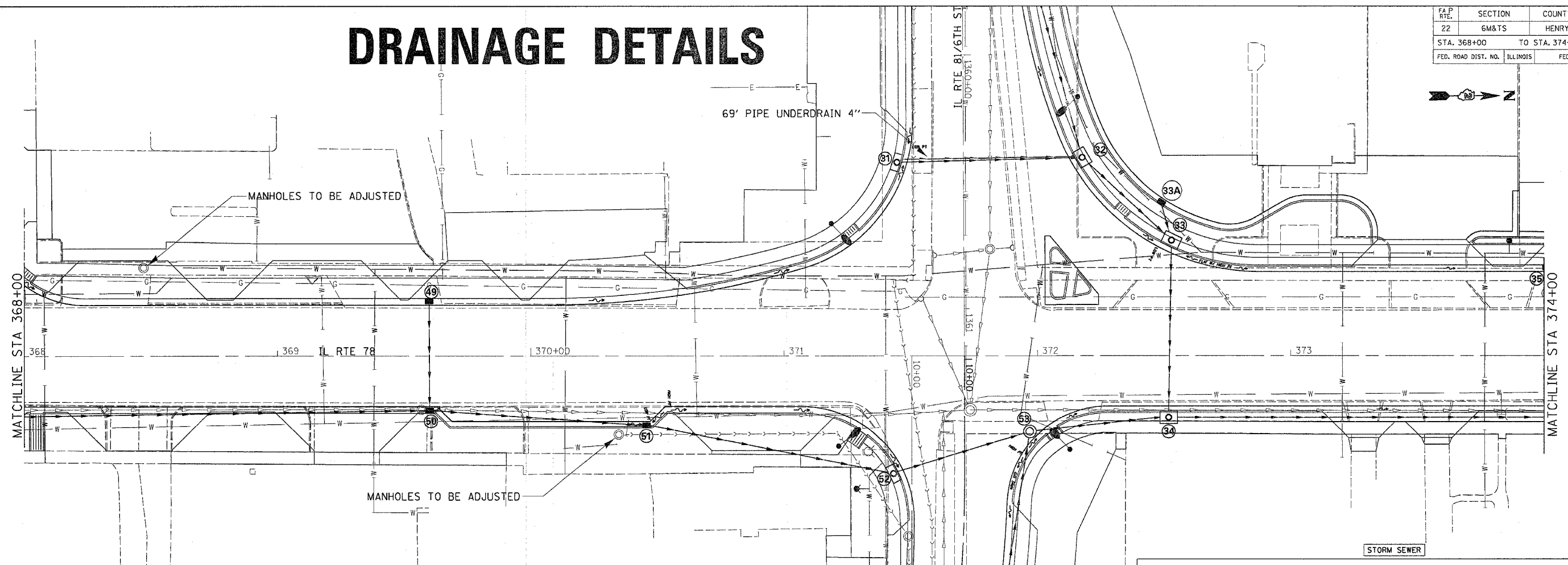


DRAINAGE DETAILS

FA P. RTEL.	SECTION	COUNTY	TOTAL SHEETS	SHEET NO.
22	6M&TS	HENRY	257	101
STA. 368+00		TO STA. 374+00		
FED. ROAD DIST. NO. ILLINOIS		FED. AID PROJECT		

PLAN	SURVEYED	BY	DATE
	NOTED		
	PLOTTED		
	CHECKED		
	DATE		
	NO.		

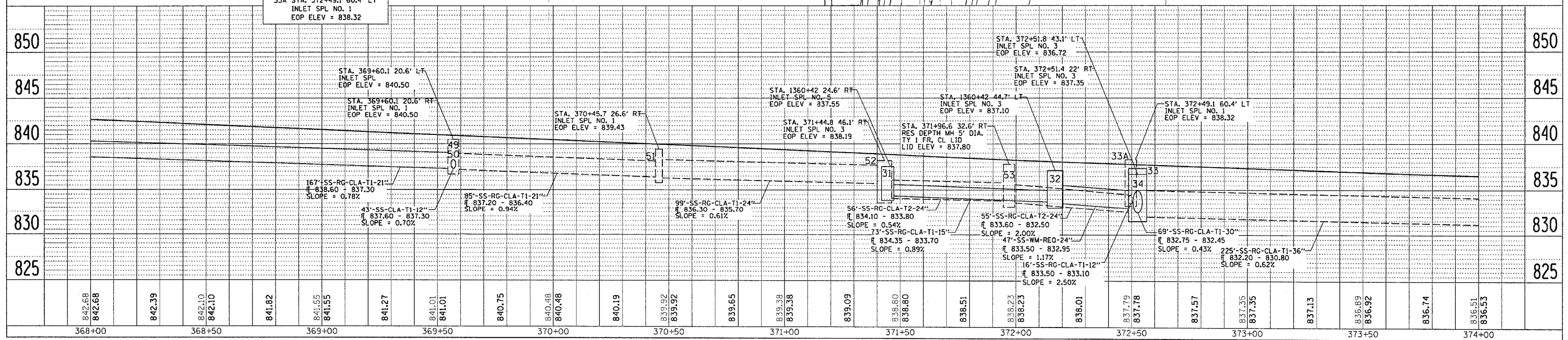
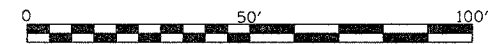
PROFILE	SURVEYED	BY	DATE
	NOTED		
	PLOTTED		
	CHECKED		
	DATE		
	NO.		



INLETS / MANHOLES		
31 STA. 1360+42 24.6' RT INLET SPL NO. 5 EOP ELEV = 837.55 WIER ELEV = 837.06	34 STA. 372+51.4 22' RT INLET SPL NO. 3 EOP ELEV = 837.35 WIER ELEV = 836.86	51 STA. 370+45.7 26.6' RT INLET SPL NO. 1 EOP ELEV = 839.43
32 STA. 1360+42 44.7' LT INLET SPL NO. 3 EOP ELEV = 837.10 WIER ELEV = 836.61	49 STA. 369+60.1 20.6' LT INLET SPL NO. 1 EOP ELEV = 840.50	52 STA. 371+44.8 46.1' RT INLET SPL NO. 3 EOP ELEV = 838.19 WIER ELEV = 837.70
33 STA. 372+51.8 43.1' LT INLET SPL NO. 3 EOP ELEV = 836.72 WIER ELEV = 836.23	50 STA. 369+60.1 20.6' RT INLET SPL NO. 1 EOP ELEV = 840.50	53 STA. 371+96.6 32.6' RT RES DEPTH MH 5' DIA. TY 1 FR, CL LID LID ELEV = 837.80
33A STA. 372+49.1 60.4' LT INLET SPL NO. 1 EOP ELEV = 838.32		

31-32 73"-SS-RG-CLA-TI-15" E 834.35 - 833.70 SLOPE = 0.89%	33A-33 16"-SS-RG-CLA-TI-12" E 833.50 - 833.10 SLOPE = 2.50%	49-50 43"-SS-CLA-TI-12" E 837.60 - 837.30 SLOPE = 0.70%	52-53 56"-SS-RG-CLA-T2-24" E 834.10 - 833.80 SLOPE = 0.54%
32-33 47"-SS-WM-REO-24" E 833.50 - 832.95 SLOPE = 1.17%	34-38A 225"-SS-RG-CLA-TI-36" E 832.20 - 830.80 SLOPE = 0.62%	50-51 85"-SS-RG-CLA-TI-21" E 837.20 - 836.40 SLOPE = 0.94%	53-34 55"-SS-RG-CLA-T2-24" E 833.60 - 832.50 SLOPE = 2.00%
33-34 69"-SS-RG-CLA-TI-30" E 832.75 - 832.45 SLOPE = 0.43%	48-50 167"-SS-RG-CLA-TI-21" E 836.60 - 837.30 SLOPE = 0.78%	51-52 99"-SS-RG-CLA-TI-24" E 836.30 - 835.70 SLOPE = 0.61%	

- STORM SEWER
- MANHOLE
- INLET SPECIAL OR NO. 1
- INLET SPECIAL NO. 3 OR 5



DATE-TIME*	842.68
DOB-SPEC*	842.68
REF	842.39
REF	842.10
REF	841.82
REF	841.55
REF	841.55
REF	841.27
REF	841.01
REF	841.01
REF	840.75
REF	840.48
REF	840.48
REF	840.19
REF	839.92
REF	839.92
REF	839.65
REF	839.38
REF	839.38
REF	839.09
REF	838.80
REF	838.80
REF	838.51
REF	838.23
REF	838.23
REF	838.01
REF	837.79
REF	837.78
REF	837.57
REF	837.35
REF	837.35
REF	837.13
REF	836.89
REF	836.92
REF	836.74
REF	836.51
REF	836.53