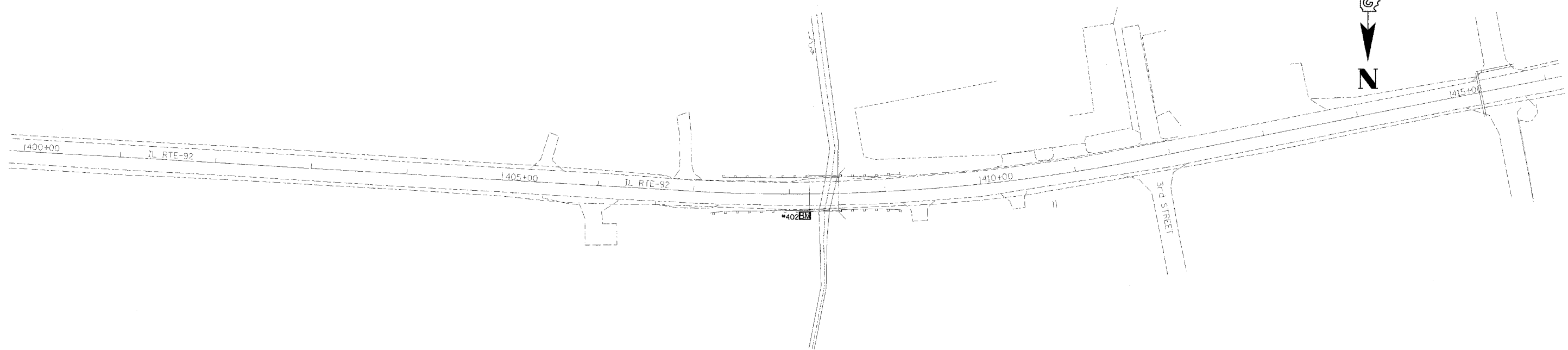
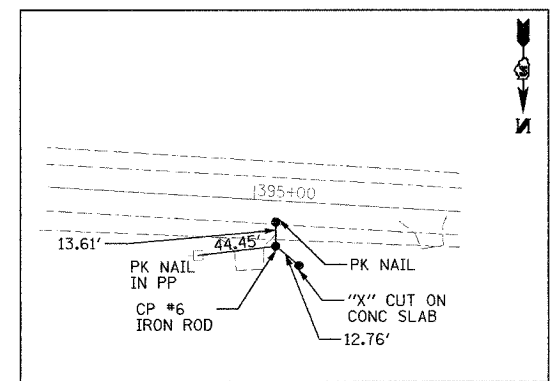


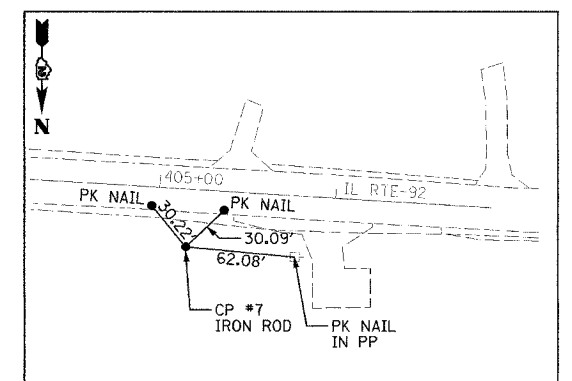
FAP NO.	SECTION	COUNTY	TOTAL SHEETS	SHEET NO.
599	42MFT-BR	ROCK ISLAND	90	14
STA. 404+30		TO STA. 411+46		
EXISTING CONDITIONS:				
CONTRACT 64641				



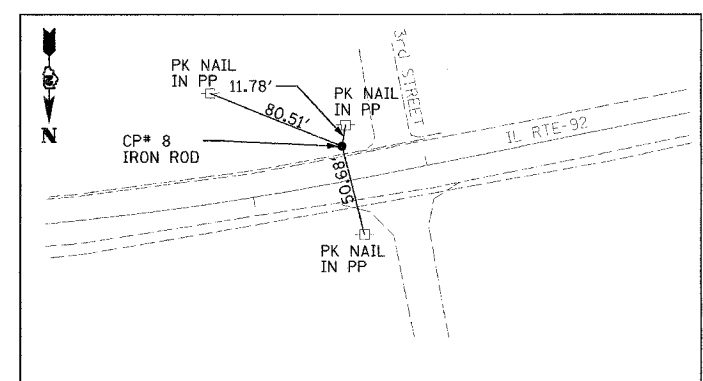
DATE	
BY	
DESIGNED	
CHECKED	
IN CHARGE	
DATE	
BY	
DATE	
BY	
DATE	



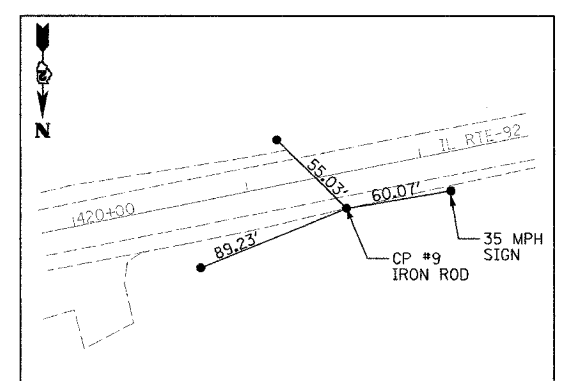
CONTROL POINT #6
 STA 395+13.89, 25.46 RT
 N 1738880.72
 E 2147608.30
 ELEV. 580.10



CONTROL POINT #7
 STA 405+16.79, 32.33 RT
 N 1738947.22
 E 2146607.52
 ELEV. 570.23



CONTROL POINT #8
 STA 411+54.44 19.73' LT
 N 1738876.68
 E 2145973.68
 ELEV. 573.81



CONTROL POINT #9
 STA 421+53.26 19.94' LT
 N 1738720.66
 E 2144986.57
 ELEV. 570.97

BENCHMARKS

BM 402 CHIS "□" ON NORTHEAST WINGWALL OF BRIDGE JUST EAST OF ANDALUSIA
 STA. 408+20.3 20.4 LT
 ELEV. 574.03

BM 403 NORTHEAST BOLT @ ABANDONED TEXACO SOUTHWEST QUAD 3rd ST. & IL 92 (BASE FOR GAS SIGN)
 STA.
 ELEV. 574.37

NOTE:
 BASIS OF BEARINGS AND COORDINATES IS ILLINOIS STATE PLANE (NAD83) WEST ZONE. GROUND VALUES SHOWN (COMBINED GRID FACTOR FOR PROJECT AREA 0.999942580). NGS MONUMENTS BUR40-1A & BUR40-1B WERE USED FOR CONTROL.

REVISIONS	
NAME	DATE

ILLINOIS DEPARTMENT OF TRANSPORTATION
 FAP 599 (IL 92)
 SECTION 42MFT-BR
 ROCK ISLAND COUNTY
 ALIGNMENT & TIES
 BENCHMARKS
 DRAWN BY: HLC

08/31/2005
 01:40:18 PM
 D16900a1b.dgn