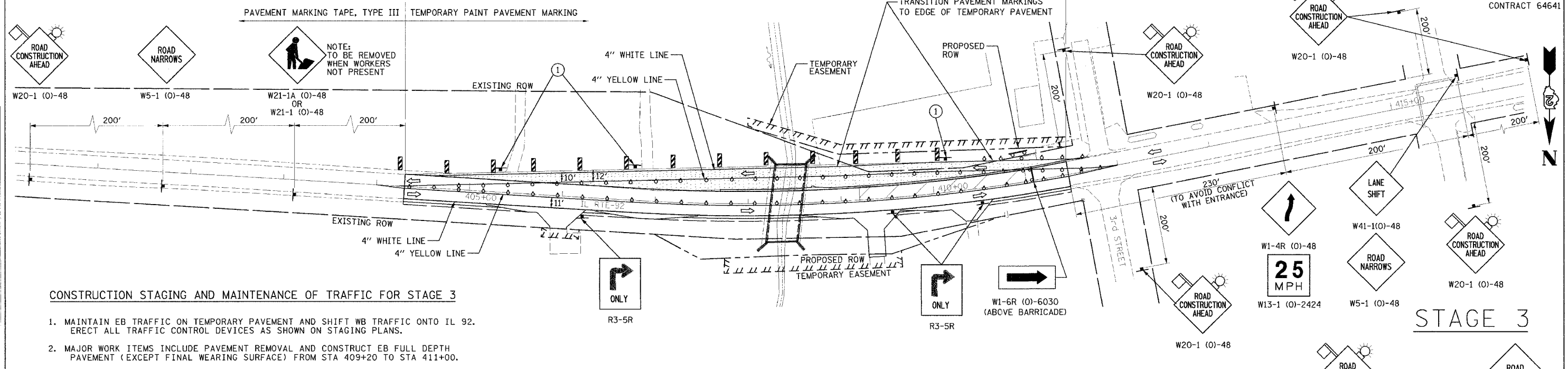


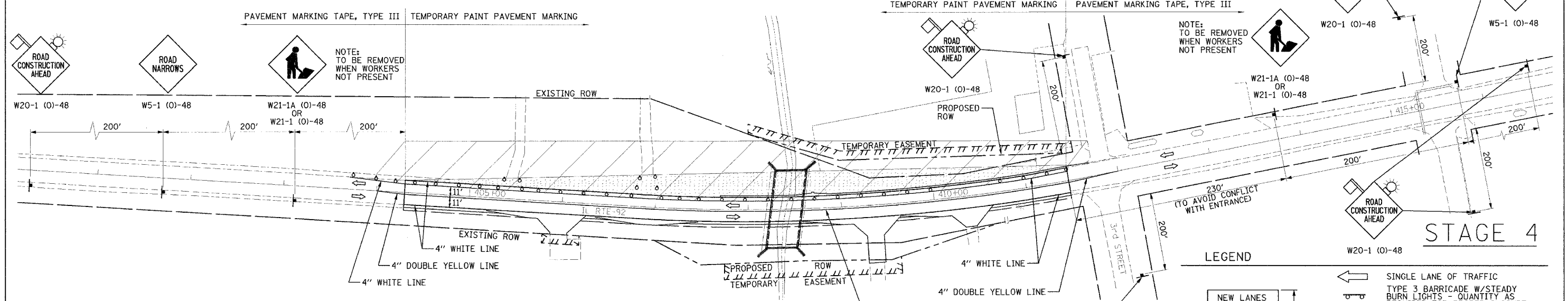
F&P ROUTE	SECTION	COUNTY	TOTAL SHEETS	SHEET NO.
599	42MFT-BR	ROCK ISLAND	90	21
STA. 404+30		TO STA. 411+46		

EXISTING CONDITIONS: CONTRACT 64641



**CONSTRUCTION STAGING AND MAINTENANCE OF TRAFFIC FOR STAGE 3**

1. MAINTAIN EB TRAFFIC ON TEMPORARY PAVEMENT AND SHIFT WB TRAFFIC ONTO IL 92. ERECT ALL TRAFFIC CONTROL DEVICES AS SHOWN ON STAGING PLANS.
2. MAJOR WORK ITEMS INCLUDE PAVEMENT REMOVAL AND CONSTRUCT EB FULL DEPTH PAVEMENT (EXCEPT FINAL WEARING SURFACE) FROM STA 409+20 TO STA 411+00.



**CONSTRUCTION STAGING AND MAINTENANCE OF TRAFFIC FOR STAGE 4**

1. SHIFT EB TRAFFIC ONTO IL 92 AND ERECT ALL TRAFFIC CONTROL DEVICES AS SHOWN ON STAGING PLANS.
2. MAJOR WORK ITEMS INCLUDE TEMPORARY PAVEMENT REMOVAL; CONSTRUCT TYPE B GUTTER, SHOULDERS AND ENTRANCES; AND RECONSTRUCT PORTION OF PARKING LOT AFFECTED BY TEMPORARY PAVEMENT.



**CONSTRUCTION STAGING AND MAINTENANCE OF TRAFFIC FOR STAGE 5**

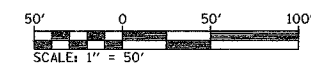
1. MAINTAIN TRAFFIC ON IL 92 WITH DAYTIME LANE CLOSURES IN ACCORDANCE WITH STANDARD 701306. PAVEMENT MARKING AND LANDSCAPING OPERATIONS SHALL BE PERFORMED IN ACCORDANCE WITH STANDARD 701311-02.
2. MAJOR WORK ITEMS INCLUDE BITUMINOUS SURFACE REMOVAL AND FINAL WEARING SURFACE PLACEMENT, PAVEMENT MARKING AND LANDSCAPING.

**LEGEND**

- ← SINGLE LANE OF TRAFFIC
- ⚡ TYPE 3 BARRICADE W/STEADY BURN LIGHTS - QUANTITY AS REQUIRED FOR PROPER CLOSURE
- ⊙ DRUM W/STEADY BURNING LIGHT AT 25' SPACING
- ⊙ VERTICAL PANEL W/STEADY BURNING LIGHT AT 50' SPACING
- ▨ TEMPORARY PAVEMENT
- ▨ WORK AREA
- ▨ TEMPORARY IMPACT ATTENUATORS IN COMPLIANCE WITH NCHRP 350 FOR THE POSTED SPEED LIMIT

**AT ALL ENTRANCES**  
NOTE: ABOVE SIGNS SHALL BE BLACK ON ORANGE REFLECTIVE BACKGROUND

REVISIONS	
NAME	DATE



ILLINOIS DEPARTMENT OF TRANSPORTATION  
F&P 599 (IL 92)  
SECTION 42MFT-BR  
ROCK ISLAND COUNTY

**MAINTENANCE OF TRAFFIC**

DRAWN BY: HLC