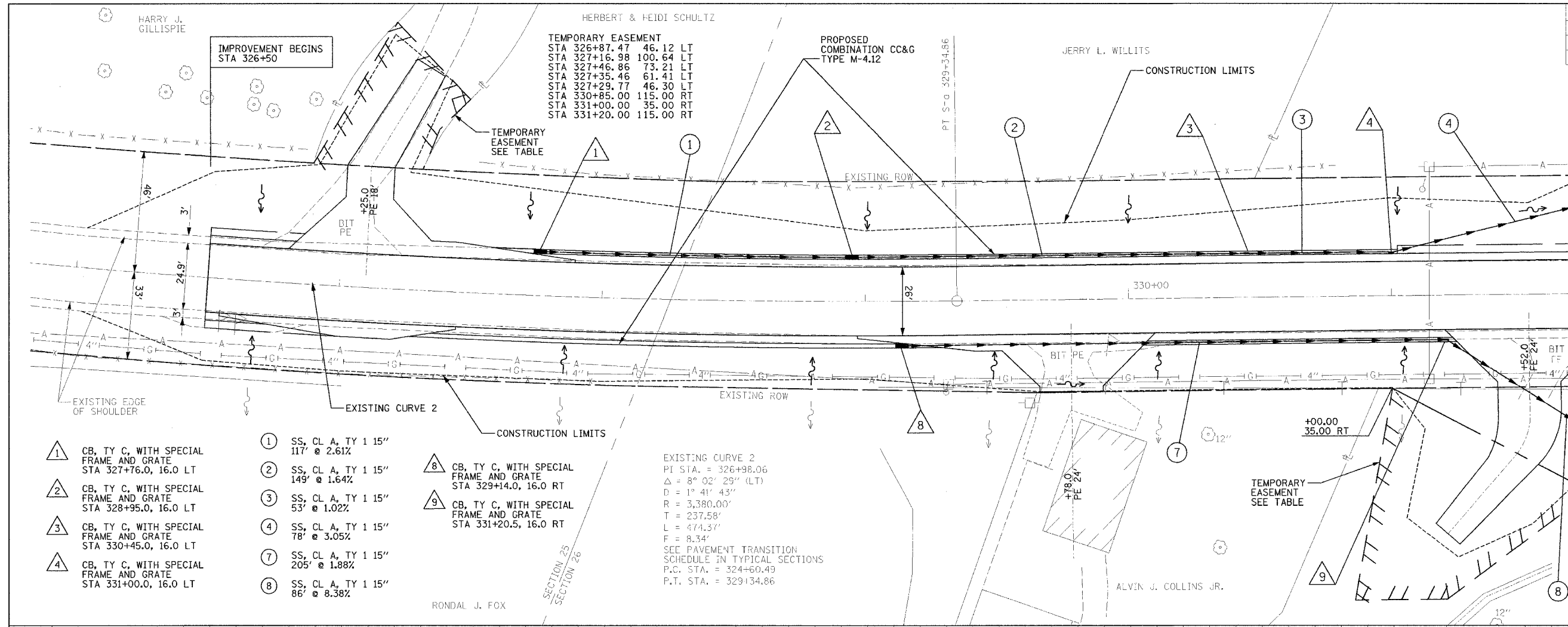


F.A.P. RTE.	SECTION	COUNTY	TOTAL SHEETS	SHEET NO.
599	42MFT-T	ROCK ISLAND	90	28
STA. 326+50		TO STA. 331+70		
FED. ROAD DIST. NO.	ILLINOIS FED. AID PROJECT		CONTRACT 64641	



- 1 CB, TY C, WITH SPECIAL FRAME AND GRATE STA 327+76.0, 16.0 LT
- 2 CB, TY C, WITH SPECIAL FRAME AND GRATE STA 328+95.0, 16.0 LT
- 3 CB, TY C, WITH SPECIAL FRAME AND GRATE STA 330+45.0, 16.0 LT
- 4 CB, TY C, WITH SPECIAL FRAME AND GRATE STA 331+00.0, 16.0 LT
- 1 SS, CL A, TY 1 15" 117' @ 2.61%
- 2 SS, CL A, TY 1 15" 149' @ 1.64%
- 3 SS, CL A, TY 1 15" 53' @ 1.02%
- 4 SS, CL A, TY 1 15" 78' @ 3.05%
- 7 SS, CL A, TY 1 15" 205' @ 1.88%
- 8 SS, CL A, TY 1 15" 86' @ 8.38%
- 8 CB, TY C, WITH SPECIAL FRAME AND GRATE STA 329+14.0, 16.0 RT
- 9 CB, TY C, WITH SPECIAL FRAME AND GRATE STA 331+20.5, 16.0 RT

