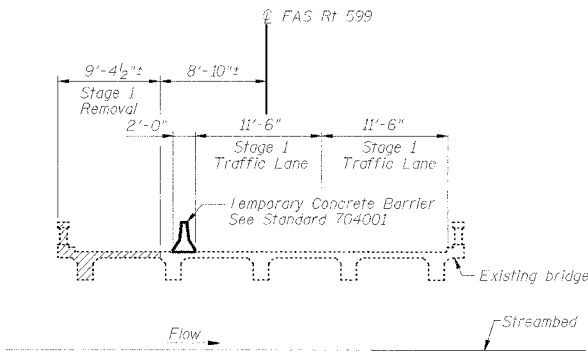


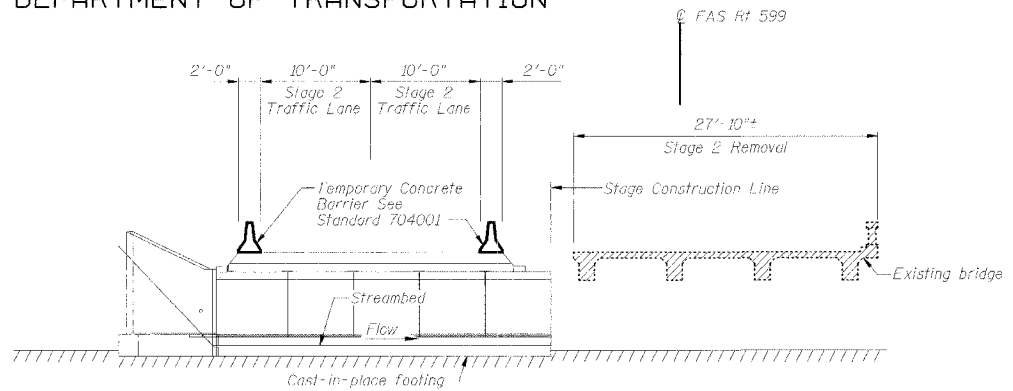
STATE OF ILLINOIS
DEPARTMENT OF TRANSPORTATION

Sheet No. 2
of 7 Sheets

ROUTE NO.	SECTION	COUNTY	TOTAL SHEETS	SHEET NO.
FAP 599	*	ROCK ISLAND	90	36
ILLINOIS DIST. NO.		PROJECT		
*42 MFT-BR		CONTRACT NO. 64641		

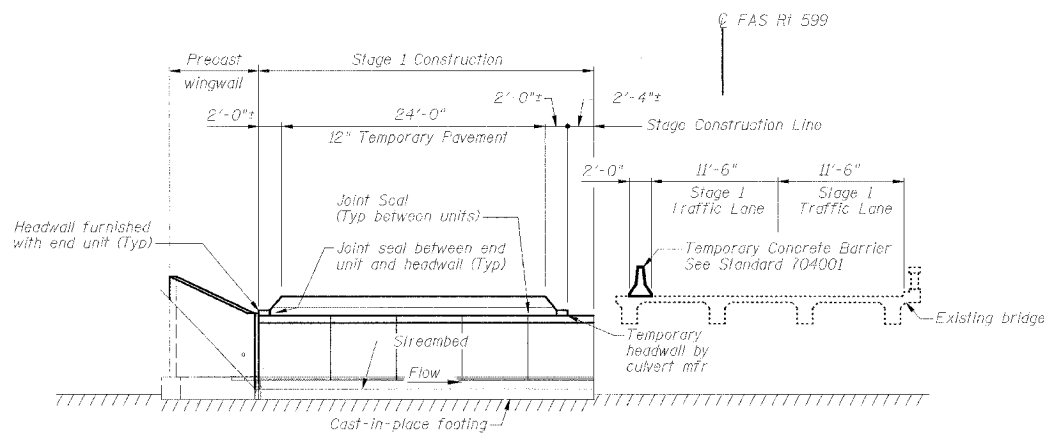


STAGE 1 REMOVAL
(Looking Upstation)

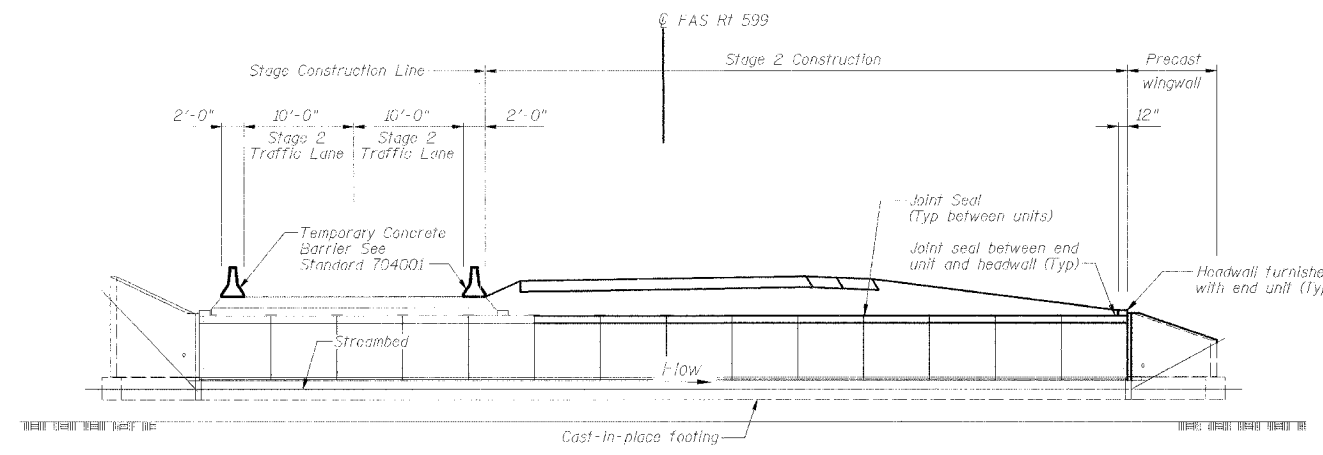


STAGE 2 REMOVAL
(Looking Upstation)

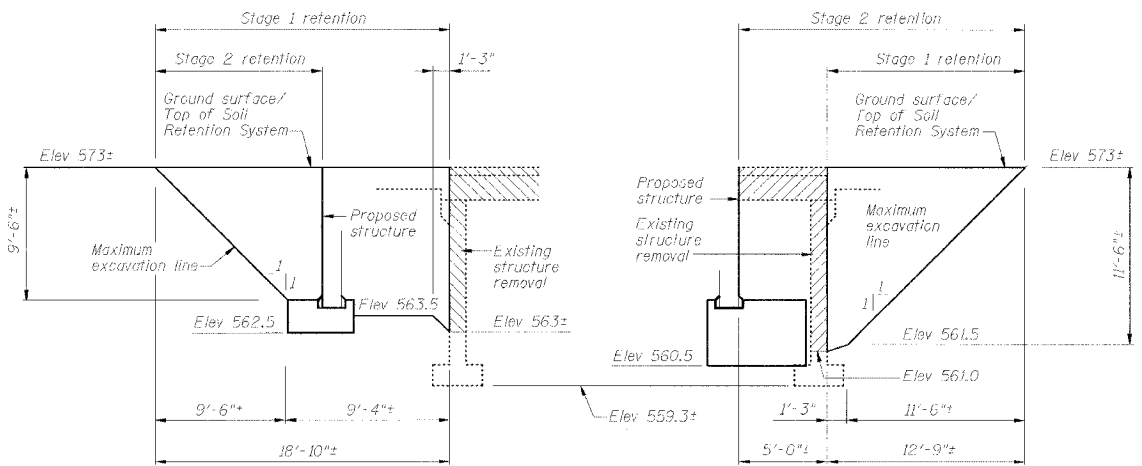
- NOTES**
1. For quantity and location of Temporary Concrete Barrier see Roadway Plans.
 2. Hatched areas indicate Removal of Existing Structure.
 3. Horizontal dimensions are at right angles to C Roadway.
 4. Stage 3 omitted. No work performed at structure during Stage 3. See Maintenance of Traffic Plans for Stage 3 details.



STAGE 1 CONSTRUCTION
(Looking Upstation)

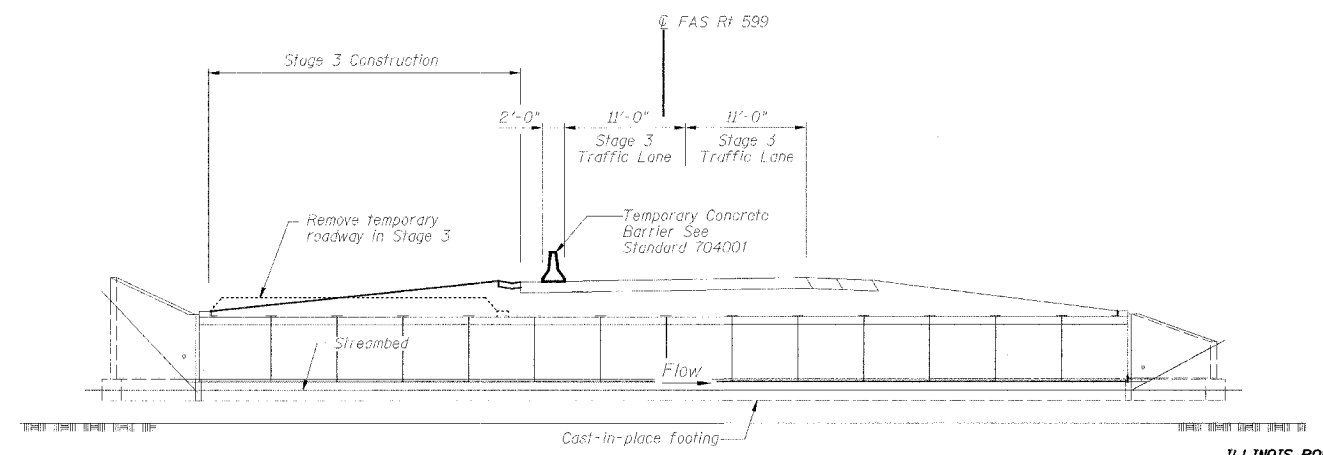


STAGE 2 CONSTRUCTION
(Looking Upstation)



TEMPORARY SOIL RETENTION DETAILS

(Slope and horizontal dimensions are measured parallel to C Roadway)
A cantilevered sheet piling design does not appear feasible and additional members or other retention systems may be necessary. The Contractor shall submit a temporary soil retention system design including plan details and calculations for review and approval by the Engineer. Approval requires 4 to 6 weeks.



STAGE 4 CONSTRUCTION
(Looking Upstation)

ILLINOIS ROUTE 92 OVER AN UNNAMED DITCH

CONSTRUCTION STAGING

REVISIONS		STATE OF ILLINOIS DEPARTMENT OF TRANSPORTATION DIVISION OF HIGHWAYS	DRAWN BY R King 2/05
NO.	DATE		
1		FAP ROUTE 599 SECTION 42 MFT-BR	CHECKED BY BWP 2/05
2			
3		STA 408+41.00 ROCK ISLAND COUNTY	DESIGNED BY CWC 2/05
4			
5		HOMER L. CHASTAIN & ASSOCIATES, LLP CONSULTING ENGINEERS 84-001397	PROJECT NO. 4858-4
6			
7			SHEET NO.