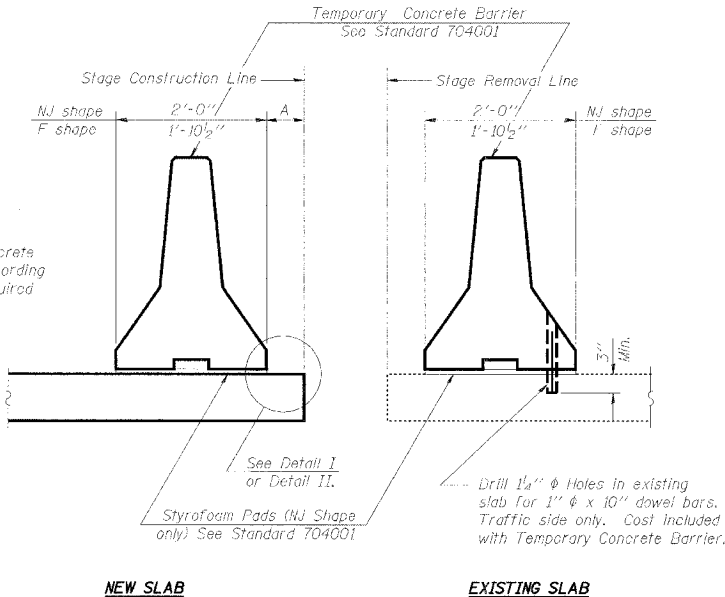


STATE OF ILLINOIS
DEPARTMENT OF TRANSPORTATION

Sheet No. 3
of 7 Sheets

ROUTE NO.	SECTION	COUNTY	TOTAL SHEETS	SHEET NO.
FAP 599	*	ROCK ISLAND	90	37
FED. ROAD DIST. NO.		ILLINOIS	PROJECT	
*42 MFT-BR		CONTRACT NO. 64611		

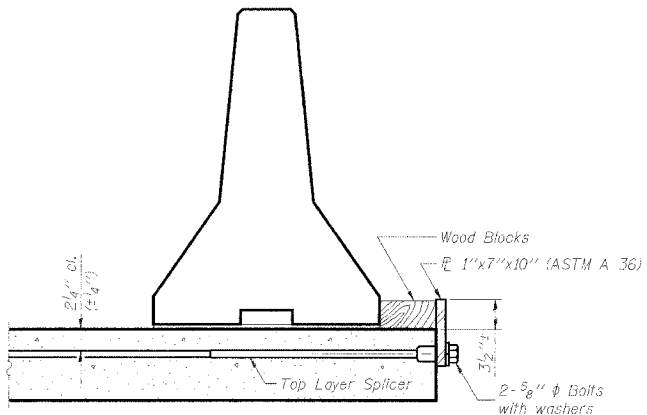


When "A" is 3'-6" or less, the temporary concrete barrier shall be anchored to the new slab according to Detail I or Detail II. No anchorage is required when "A" is greater than 3'-6".

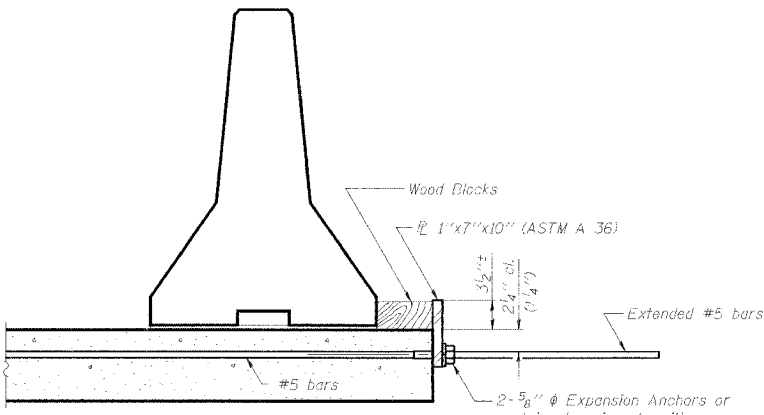
SECTIONS THRU SLAB

NOTES

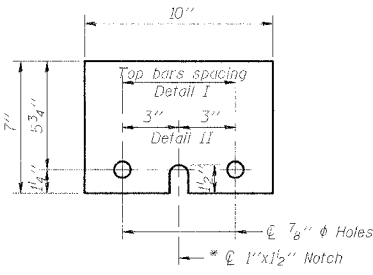
- Detail I - With Bar Splicer or Couplers:
Connect one (1) 1"x7"x10" steel plate to the top layer of couplers with 2-5/8" diameter bolts screwed to coupler at approximate center of each barrier panel.
- Detail II - With Extended Reinforcement Bars:
Connect one (1) 1"x7"x10" steel plate to the concrete slab with 2-5/8" diameter Expansion Anchors or cast in place inserts spaced between the top layer of reinforcement at approximate center of each barrier panel.
Cost of anchorage is included with Temporary Concrete Barrier.



DETAIL I
The 1"x7"x10" Plate shall not be removed until Stage II Construction forms and reinforcement bars are in place.



DETAIL II
The 1"x7"x10" Plate shall not be removed until Stage II Construction forms and all reinforcement bars are in place and the concrete is ready to be placed.



1" x 7" x 10"
* Required only with Detail II

ILLINOIS ROUTE 92 OVER AN UNNAMED DITCH

TEMPORARY CONCRETE BARRIER FOR STAGE CONSTRUCTION

DESIGNED BY H. King 2/05	STATE OF ILLINOIS DEPARTMENT OF TRANSPORTATION DIVISION OF HIGHWAYS	DATE
CHECKED BY BWP 2/05		DATE
DRAWN BY CWC 2/05		DATE
NO.	DATE	REVISIONS
1		
2		
3		
4		
5		
6		
7		
8		
9		
10		
11		
12		
FAP ROUTE 599 SECTION 42 MFT-BR		BOOK NUMBER
SN 081-1009		
STA 408+41.00 ROCK ISLAND COUNTY		PROJECT NO.
HOMER L. CHASTAIN & ASSOCIATES, LLP CONSULTING ENGINEERS 184-001397		4858-4
		SHEET NO.