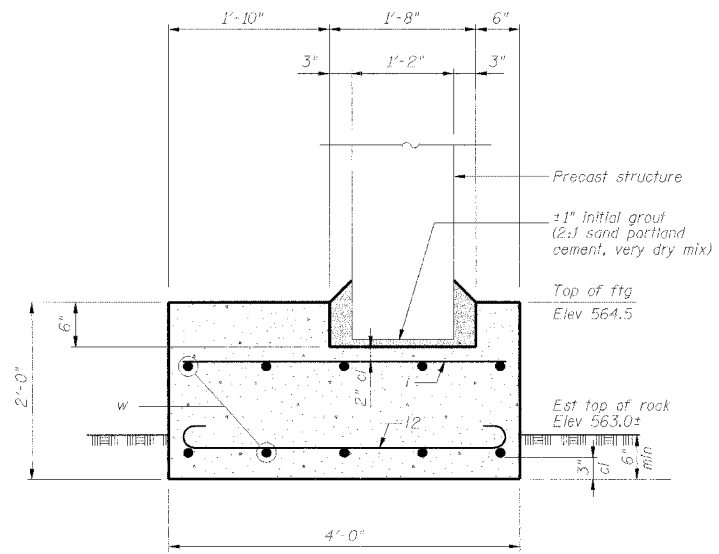


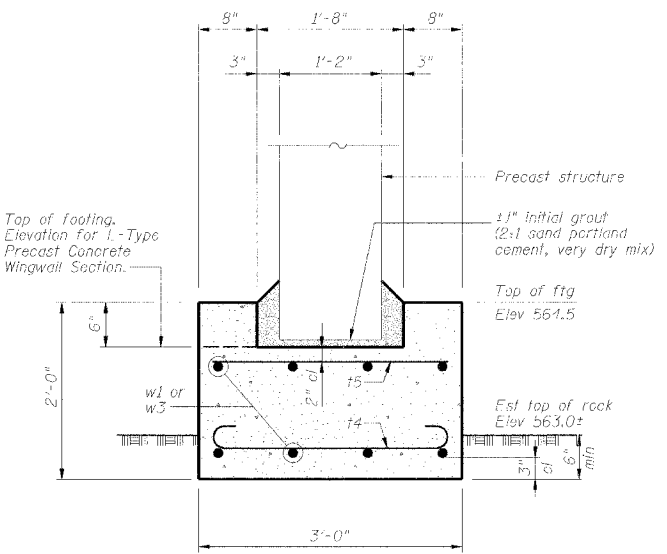
STATE OF ILLINOIS
DEPARTMENT OF TRANSPORTATION

Sheet No. 5
of 7 Sheets

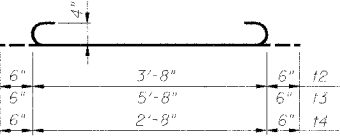
ROUTE NO.	SECTION	COUNTY	TOTAL SHEETS	SHEET NO.
FAP 599	*	ROCK ISLAND	90	39
FED. ROAD DIST. NO.		ILLINOIS PROJECT		
*42 MFT BR		CONTRACT NO. 64541		



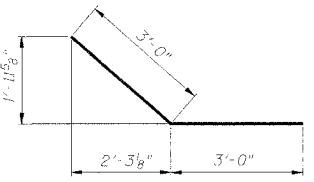
SECTION A-A



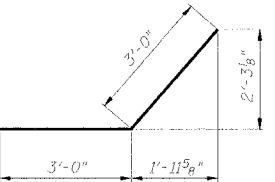
SECTION B-B



BARS t2, t3 & t4



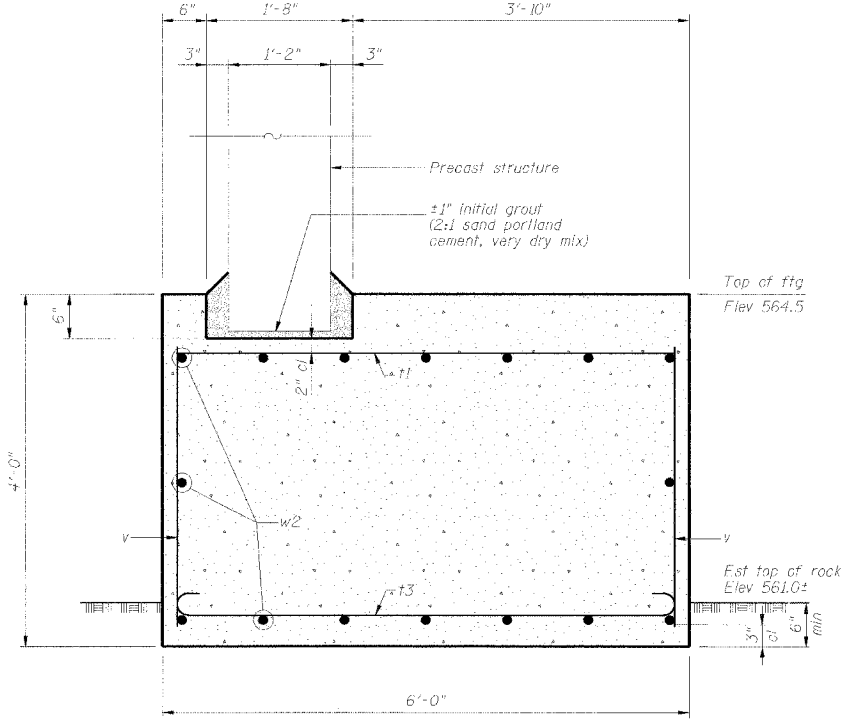
BAR w4



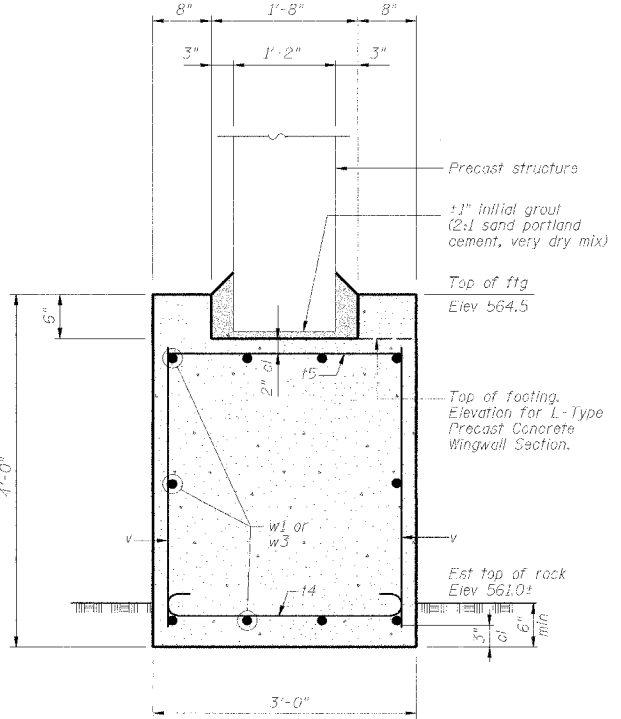
BAR w5

BILL OF MATERIAL

Bar	No.	Size	Length	Shape
t	128	#4	3'-8"	
t1	129	#4	5'-8"	
t2	129	#4	4'-8"	
t3	129	#4	6'-8"	
t4	76	#4	3'-8"	
t5	76	#4	2'-8"	
v	164	#4	3'-7"	
w	30	#5	30'-0"	
w1	18	#5	12'-9"	
w2	48	#5	31'-1"	
w3	18	#5	11'-6"	
w4	18	#5	6'-0"	
w5	18	#5	6'-0"	
Concrete Structures		Cu. Yd.	110.4	
Reinforcement Bars		Pound	5670	
Rock Excavation for Structures		Cu. Yd.	18.1	



SECTION C-C



SECTION D-D

ILLINOIS ROUTE 92 OVER AN UNNAMED DITCH

FOUNDATION DETAILS

REVISIONS	STATE OF ILLINOIS DEPARTMENT OF TRANSPORTATION DIVISION OF HIGHWAYS	DRAWN BY DATE R King 2/05
1		CHECKED BY DATE BWP 2/05
2		DATE BY DATE CWC 2/05
3		BOOK NUMBER
4	FAP ROUTE 599 SECTION 42 MFT-BR	PROJECT NO.
5	SN 081-1009	4858-4
6	STA 408+41.00 ROCK ISLAND COUNTY	SHEET NO.
7	HOMER L. CHASTAIN & ASSOCIATES, LLP	
8	CONSULTING ENGINEERS	
9	184-001397	