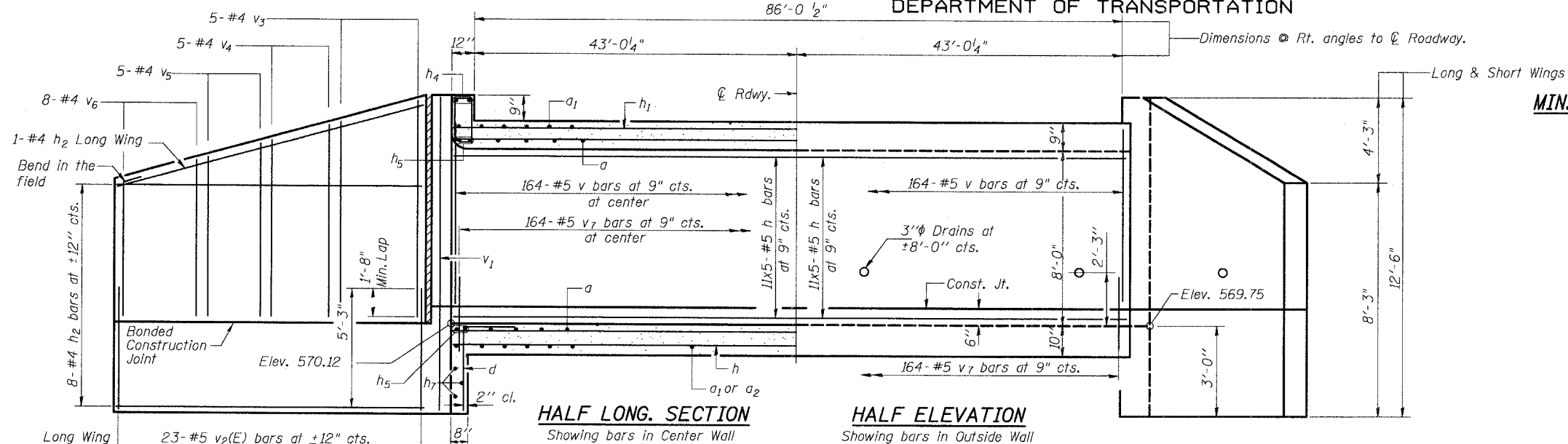


STATE OF ILLINOIS
DEPARTMENT OF TRANSPORTATION

ROUTE NO.	SECTION	COUNTY	STATION	SHEET NO.	SHEET NO. 2 4 SHEETS
FAP 599	42 MFT-T	ROCK ISLAND	90	43	
FED. ROAD DIST. NO. 7	ILLINOIS	FED. AID PROJECT-			
Contract No. 64641					



MIN. REBAR LAP LENGTH

Unless Noted otherwise
#4 Bar Size = 1'-4"
#5 Bar Size = 1'-8"

BILL OF MATERIAL

Bar	No.	Size	Length	Shape
a	300	#7	23'-5"	U
a1	374	#8	9'-8"	U
a2	114	#4	7'-4"	U
d	40	#4	4'-6"	L
h	385	#5	26'-3"	U
h1	136	#5	32'-4"	U
h2	20	#4	22'-4"	U
h3	26	#8	8'-10"	L
h4	4	#9	30'-0"	U
h5	8	#7	30'-6"	U
h6	20	#8	12'-11"	L
h7	6	#6	30'-0"	U
s	60	#4	4'-7"	U
v	494	#5	8'-0"	U
v1	14	#4	12'-2"	U
v2(E)	46	#5	5'-3"	U
v3	10	#4	8'-9"	U
v4	10	#4	7'-9"	U
v5	10	#4	6'-10"	U
v6	16	#4	5'-11"	U
v7	494	#5	3'-0"	U
w	32	#5	21'-0"	U
z	80	#7	8'-8"	L
Concrete Box Culverts			Cu. Yd.	271.9
Reinforcement Bars			Pound	51160

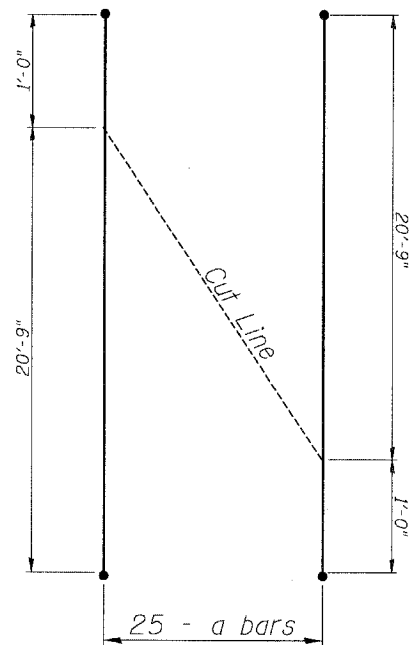
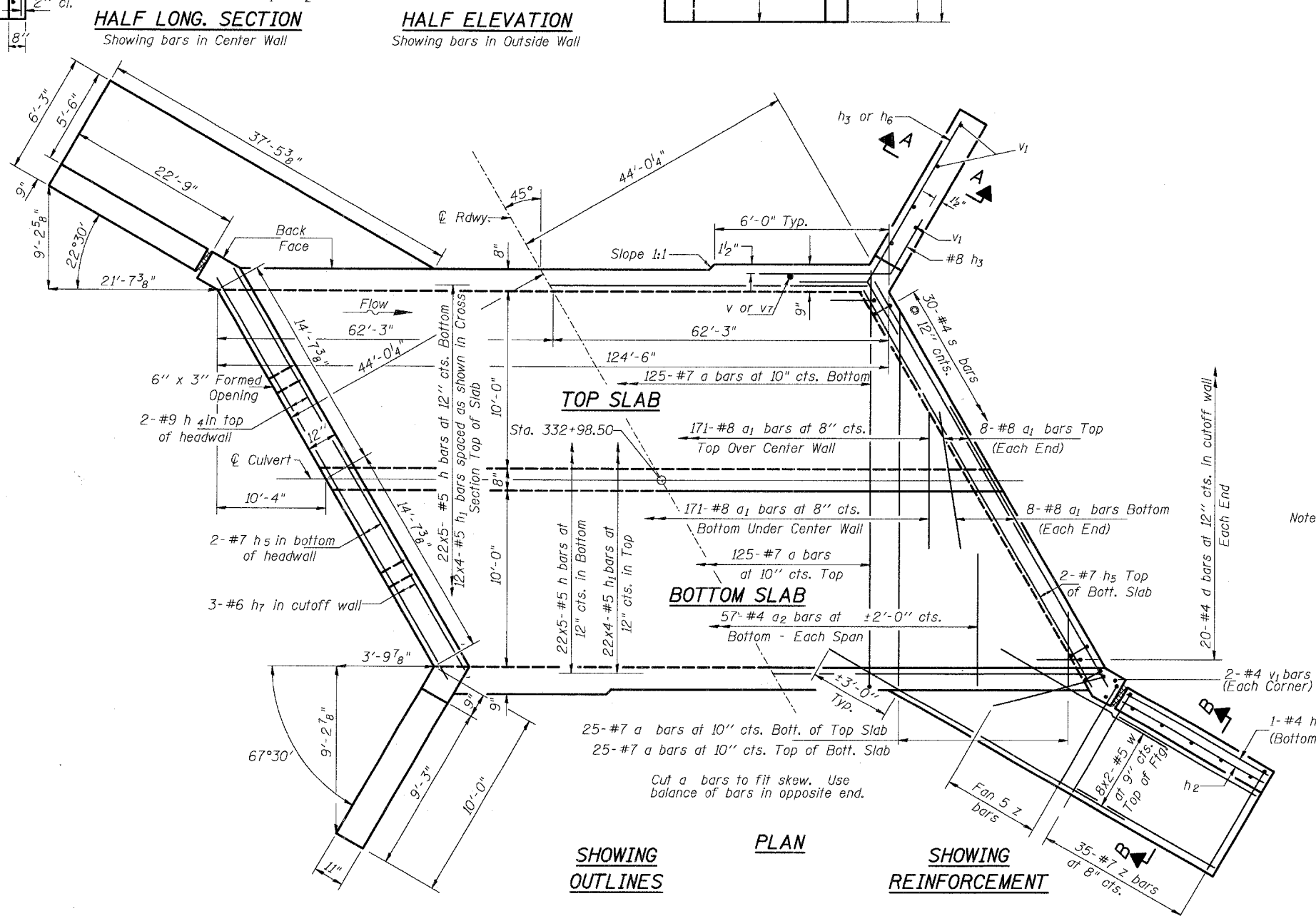
* Reinforcement bars designated (E) shall be epoxy coated. The cost of Epoxy Coating is included in the pay item "Reinforcement Bars".

Notes: A distance of half the length of the short wingwall but not less than six feet of the barrel shall be poured monolithically with the short wingwalls.
Bars indicated thus 12x4-#5 etc. indicates 12 lines of bars with 4 lengths per line.

The cost of porous granular backfill in the excavated areas around the cut off wall and the horizontal cantilever wall stem and the seal coat concrete below the toe & the porous granular backfill in front of the L-Type wing is included in the pay item "Concrete Box Culverts".

CULVERT DETAILS
FAP ROUTE 599 - SECTION 42 MFT-T
ROCK ISLAND COUNTY
STATION 332+98.50
STRUCTURE NO. 081-1008

MID-AMERICA ENGINEERING SERVICES
975 South Durkin Dr, Springfield IL 62704



Bar Cutting Diagram

DESIGNED	-	J.L.K.
CHECKED	-	K.R.G.
DRAWN	-	M.D.-P.W.S.
CHECKED	-	K.R.G.