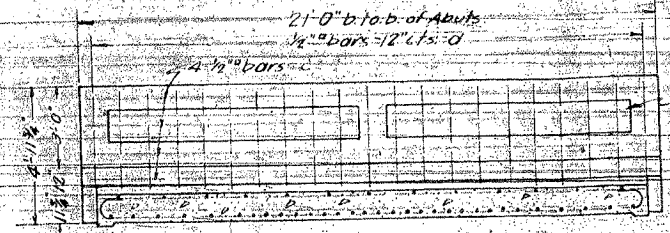
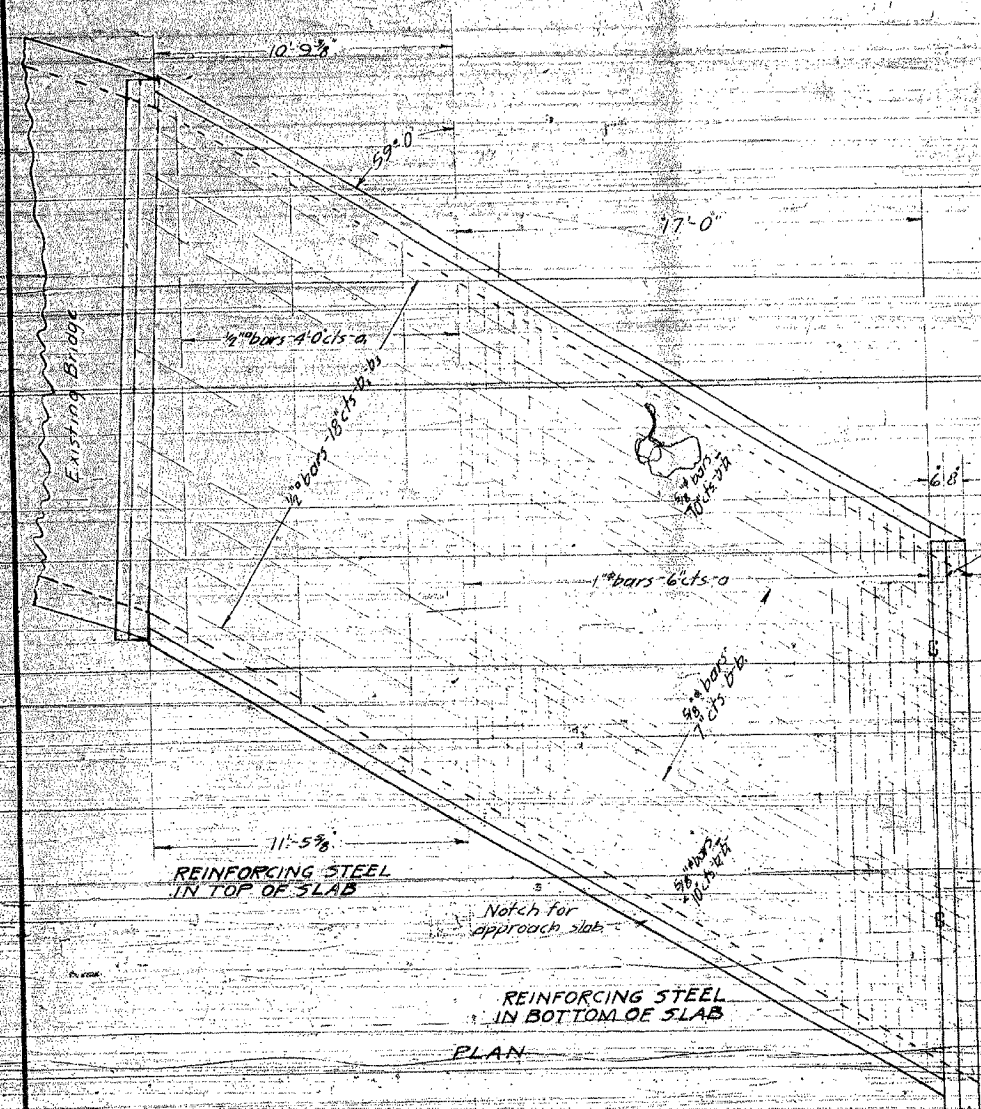


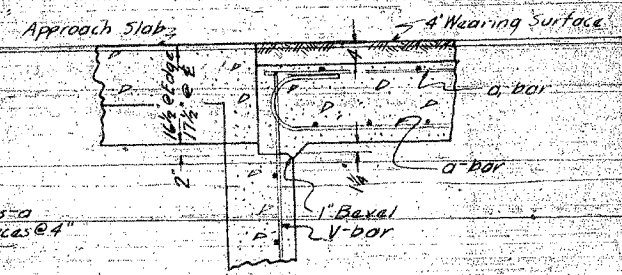
STATE OF ILLINOIS
DEPARTMENT OF PUBLIC WORKS & BUILDINGS
DIVISION OF HIGHWAYS

FAP NO.	SECTION	COUNTY	TOTAL SHEETS	SHEET NO.
599	42MFT-BR & 42MFT-T	ROCK ISLAND	90	48
STA.	TO STA.			

EXISTING CONDITIONS:
CONTRACT 64641
FOR INFORMATION ONLY



LONGITUDINAL SECTION



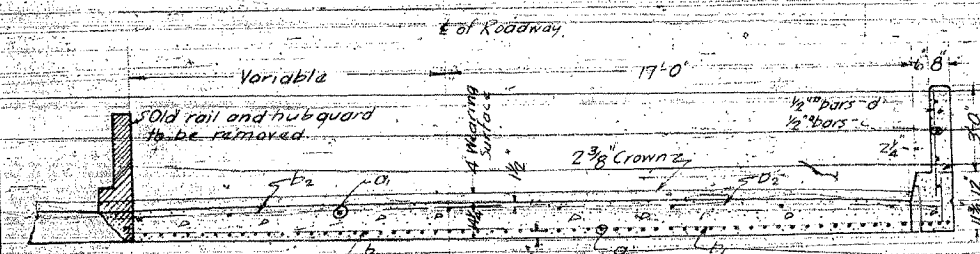
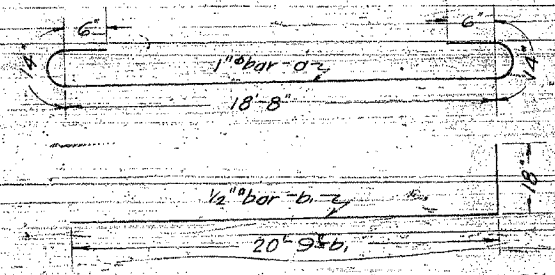
DETAIL OF APPROACH SLAB

SUPERSTRUCTURE
BILL OF MATERIAL

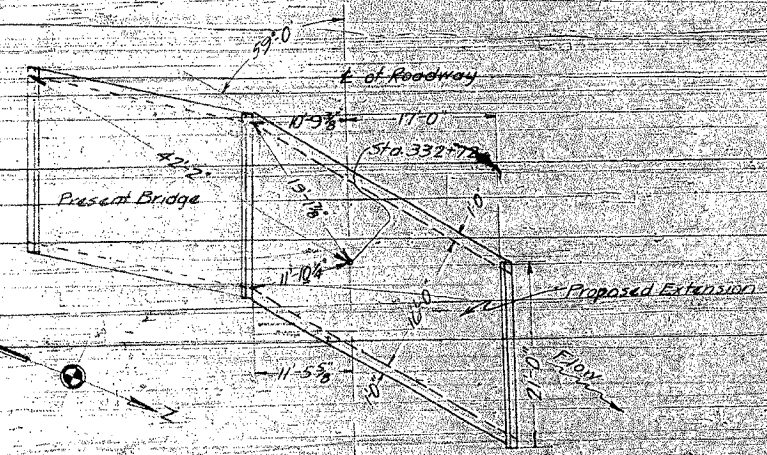
Bar	No.	Size	Length
a	60	1"Ø	27'-0"
a	7	3/4"Ø	19'-3"
b	27	3/8"Ø	21'-0"
b	27	1/2"Ø	13'-0"
b	13	1/2"Ø	21'-0"
b	13	1/2"Ø	13'-0"
c	8	1/2"Ø	20'-6"
d	44	1/2"Ø	17'-3"

Class A Conc. Cu Xds. 25.3
Hard Rail Conc. Cu Xds. 1.6
Reinforcing Steel lbs 5070
F.P.C. Pavement sq Yds. 690

Class A Concrete shall be used throughout. Reinforcing steel shall be placed and fastened according to Article 43.5 5th Specifications. Old reinforcing steel shall be bent into new concrete where possible to tie them together. In joining the old structure with the new structure Article 44.12 of 5th Specifications shall be followed.



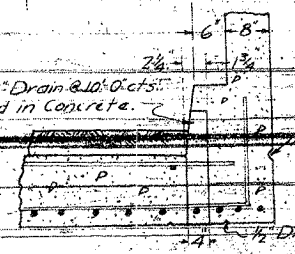
TYPICAL CROSS-SECTION



GENERAL LAYOUT

COMPUTED	1111 G. Peter	EXAMINED	
CHECKED		PASSED	
DRAWN	1111 G. Peter	APPROVED	
CHECKED			
ASSEMBLED			
CHECKED			

EXAMINED
PASSED
APPROVED



DETAIL OF DRAINS

BUYER BRIDGE
S.A.R.T. 9 SEC. 41-B.M.P.T.
ROCK ISLAND CO.
STA. 332+72