

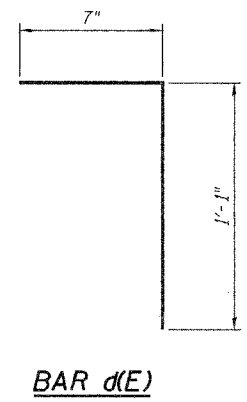
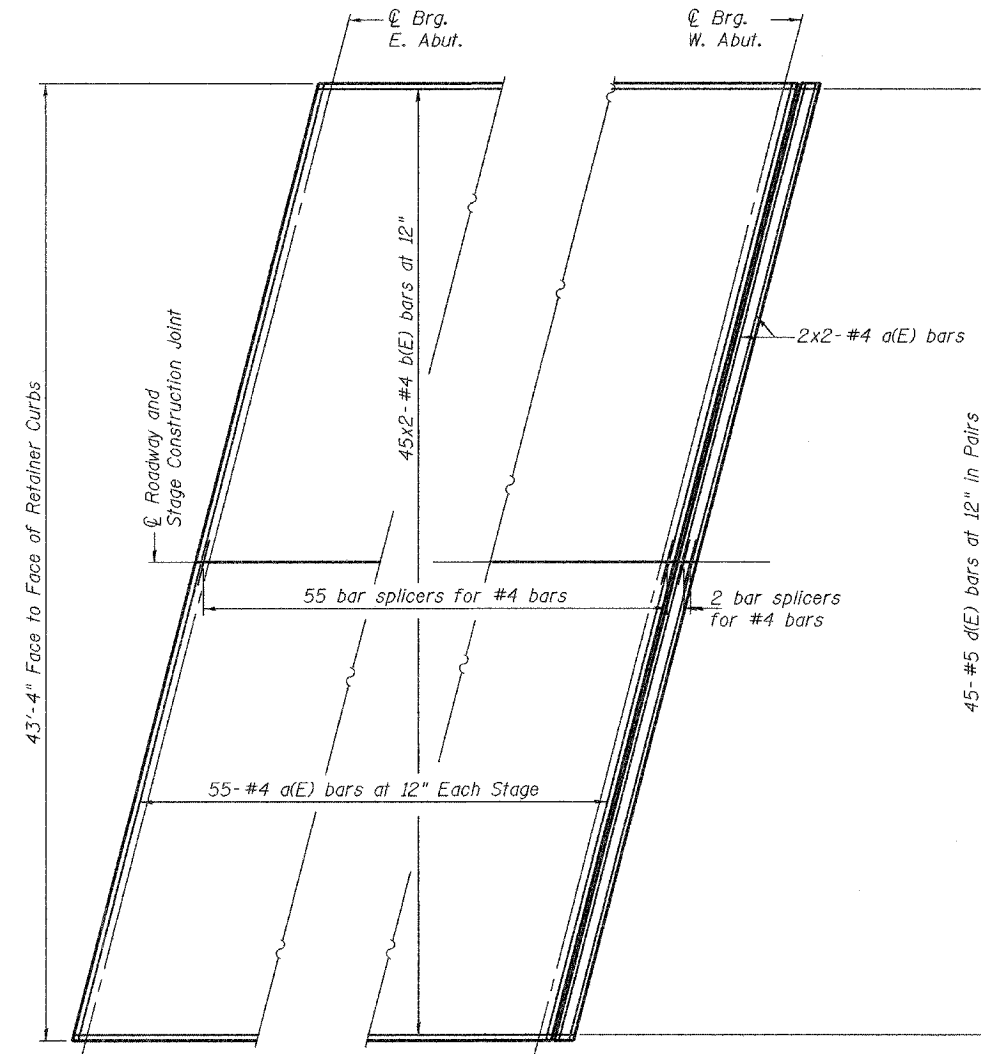
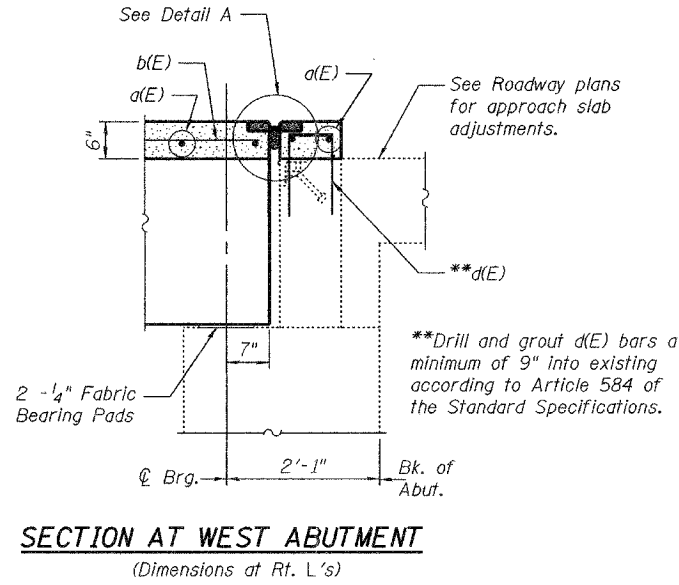
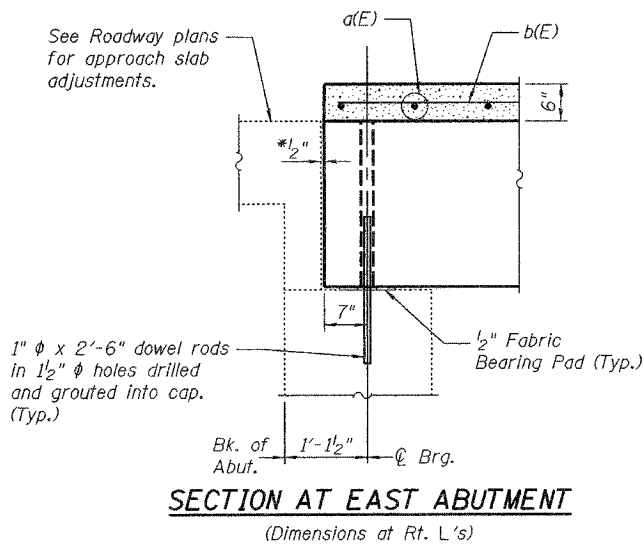
STATE OF ILLINOIS
DEPARTMENT OF TRANSPORTATION

ROUTE NO.	SECTION	COUNTY	LENGTH	SHEET	SHEET NO. 2 5 SHEETS
		Rock Island	90	51	
FED. ROAD DIST. NO. 7		ILLINOIS		FED. AID PROJECT-	

Contract Number: 64641

Note:
After beams have been erected, holes shall be drilled into substructure and anchor dowels placed 1'-3" minimum into existing caps. Dowel holes shall be filled with non-shrink grout to top of beam and allowed to cure a minimum of 24 hours prior to grouting the shear keys.

*Joint shall be filled with non-shrink grout. This dimension may vary plus or minus to accommodate tolerance in beam lengths.

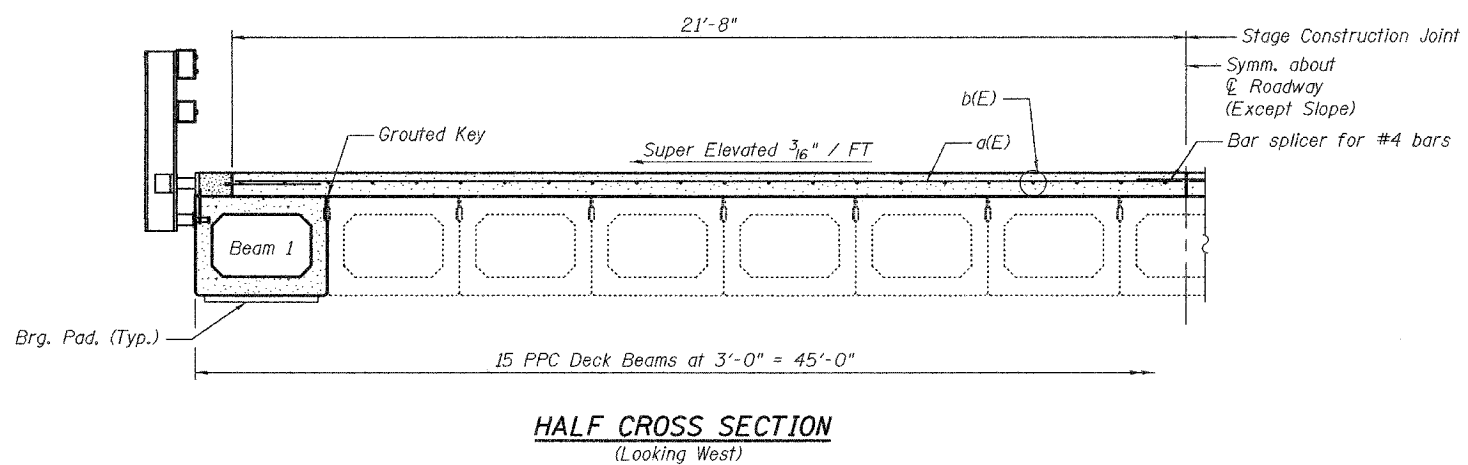
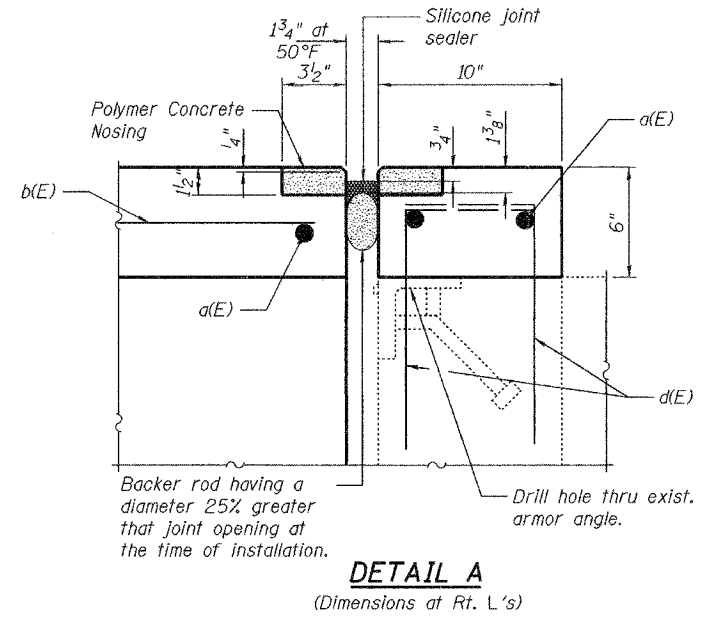


BILL OF MATERIAL

Bar	No.	Size	Length	Shape
a(E)	114	#4	22'-3"	—
b(E)	90	#4	27'-11"	—
d(E)	90	#5	1'-8"	L
Reinforcement Bars, Epoxy Coated			Lbs.	3,530

Reinforcement bars designated (E) shall be epoxy coated.
Bars indicated thus 1 x 2-#5 etc. indicates 1 line of bars with 2 lengths per line.

MIN BAR LAP
#4 = 1'-4"



OVERLAY AND JOINT DETAILS
IL 92
ROCK ISLAND COUNTY
SN 081-0076

DESIGNED	V.H.V.	September 23, 2005
CHECKED	M.J.T.	EXAMINED <i>John A. Morris</i> ENGINEER OF STRUCTURAL SERVICES
DRAWN	Drew Christopher	PASSED <i>Ralph E. Anderson</i> ENGINEER OF BRIDGES AND STRUCTURES
CHECKED	V.H.V. M.J.T.	