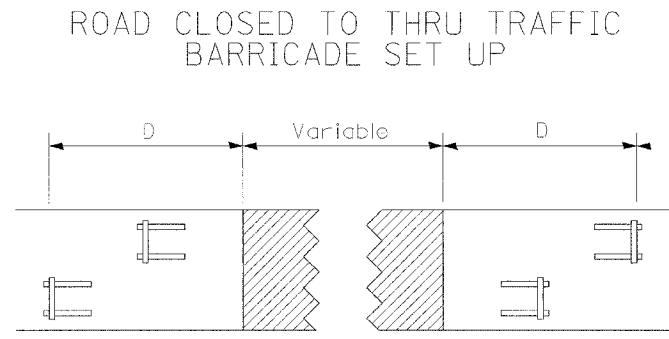
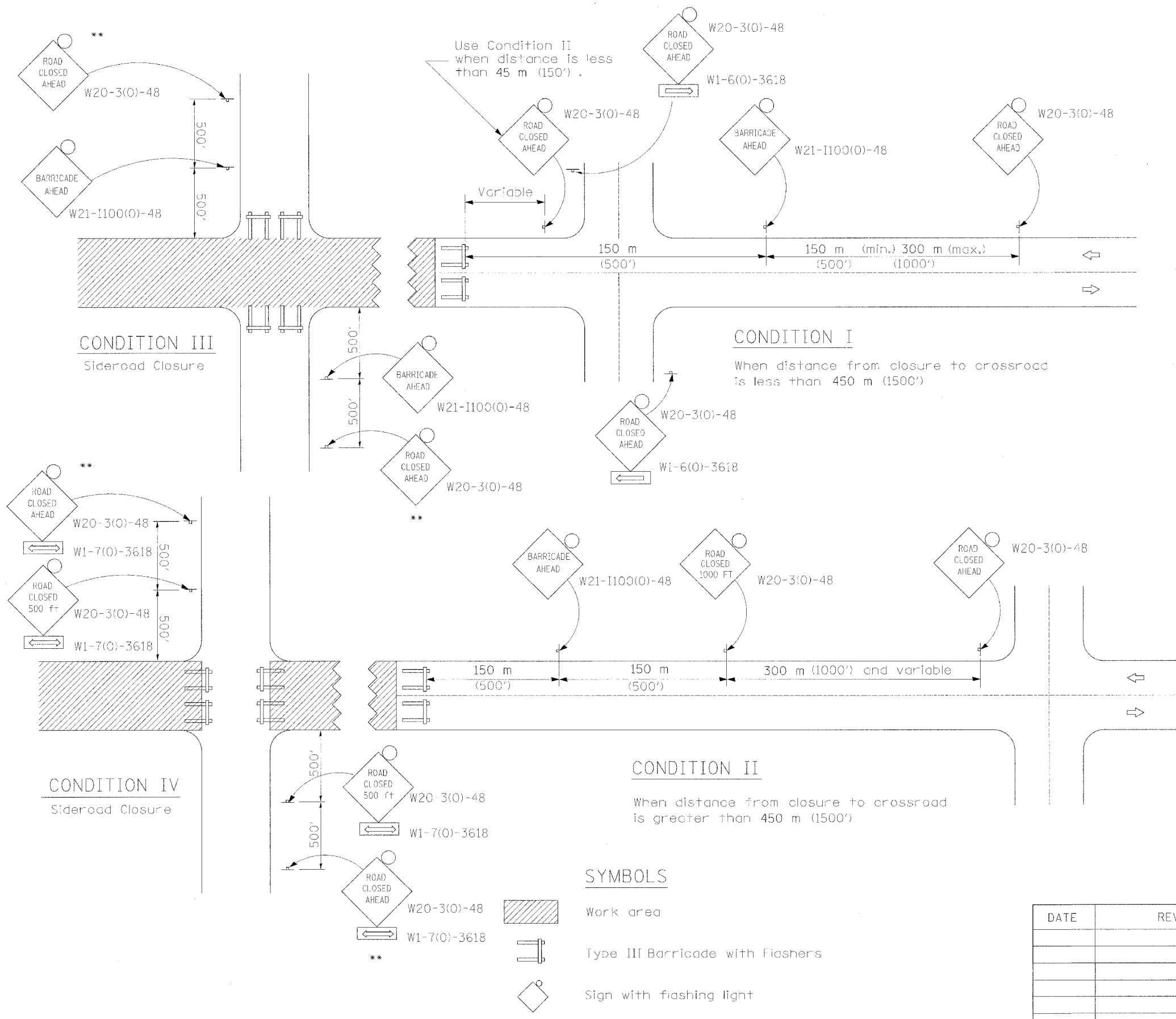


F.A.P. RTE.	SECTION	COUNTY	TOTAL SHEETS	SHEET NO.
599	42MFT-02 + 42MFT-07	Rock Island	90	57
STA. 404+30 & 326+50		TO STA. 411+48 & 336+10		
FED. ROAD DIST. NO.		ILLINOIS FED. AID PROJECT		



Type III Barricades and R11-4-4830 signs shall be as shown in "Road Closed To All Thru Traffic" detail on Highway Standard 702001. If the distance "D" exceeds 600 m (2000') an additional set of barricades and R11-4-4830 shall be placed at each end of the work area.

GENERAL NOTES

- ** Where local access is to be maintained, barricades are to be set up as shown above in Road Closed to thru traffic.
- Type III Barricades and R11-2-4830 signs shall be as shown in "Road Closed To All Traffic" detail on Highway Standard 702001.
- Longitudinal dimensions may be adjusted to fit field conditions.
- When the distance between the barricade and the intersection is between 450 m (1500') and 600 m (2000'), the advance sign shall be placed at the intersection. When the distance between the barricade and the intersection is over 600 m (2000'), an additional sign shall be placed at the intersection. The additional sign shall give the distance to the barricade in miles or fractions of a mile.
- All dimensions are in millimeters (inches) unless otherwise shown.

SYMBOLS

- Work area
- Type III Barricade with Flashers
- Sign with flashing light

DATE	REVISIONS

TYPICAL APPLICATION OF TRAFFIC CONTROL DEVICES FOR ROAD CLOSURE

TRAFFIC CONTROL FOR ROAD CLOSURE