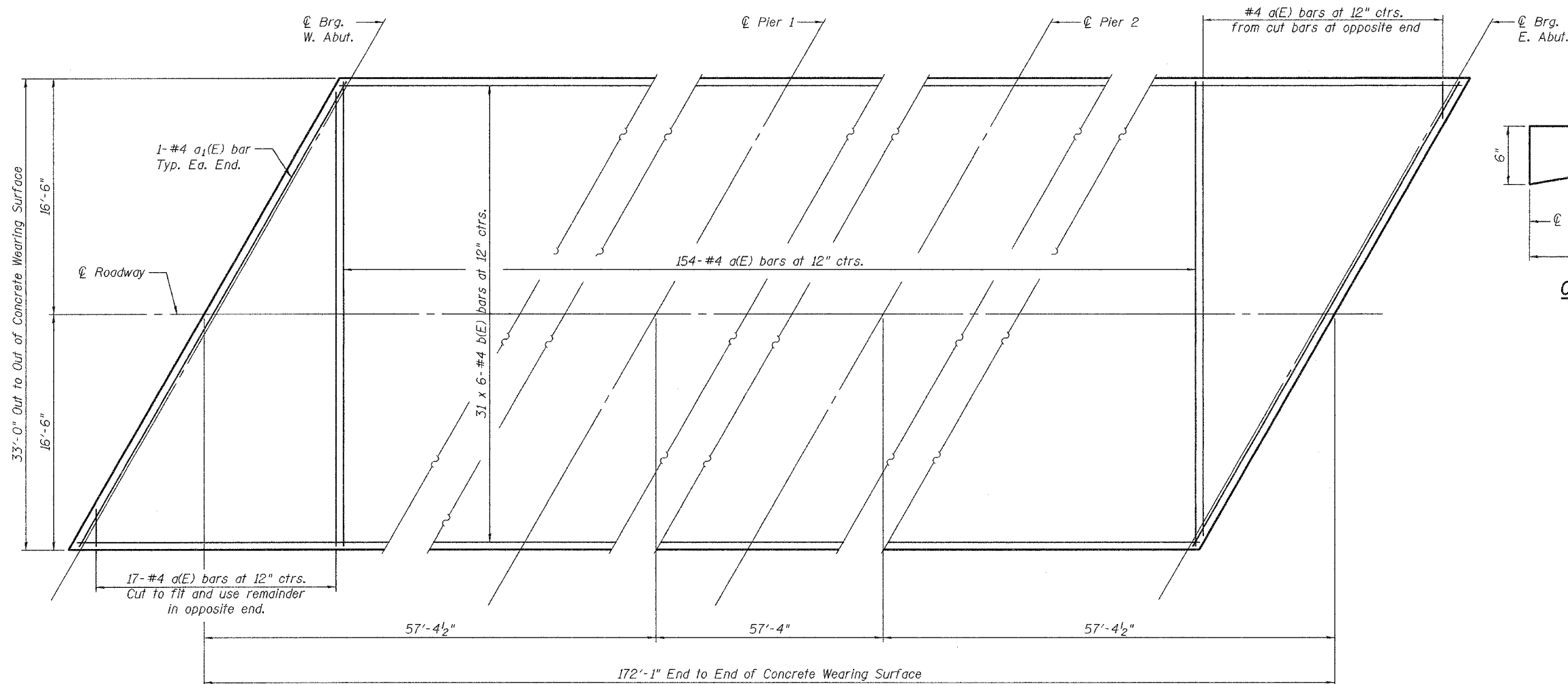


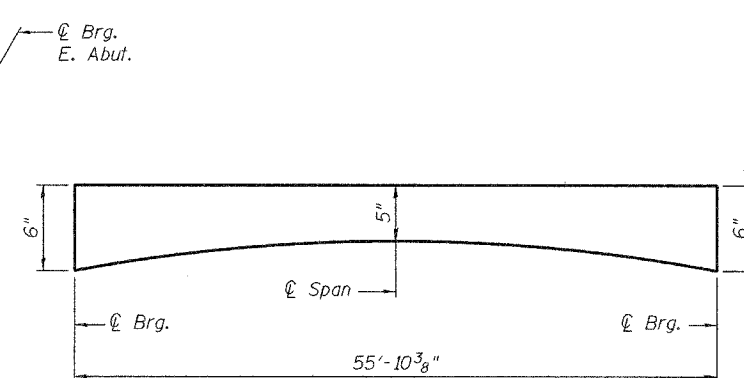
STATE OF ILLINOIS
DEPARTMENT OF TRANSPORTATION

ROUTE NO.	SECTION	COUNTY	SHEET NO.	SHEET NO. 2
		Whiteside	12	5 SHEETS
FED. ROAD DIST. NO. 7	ILLINOIS	FED. AID PROJECT-		

Contract Number: 64A51

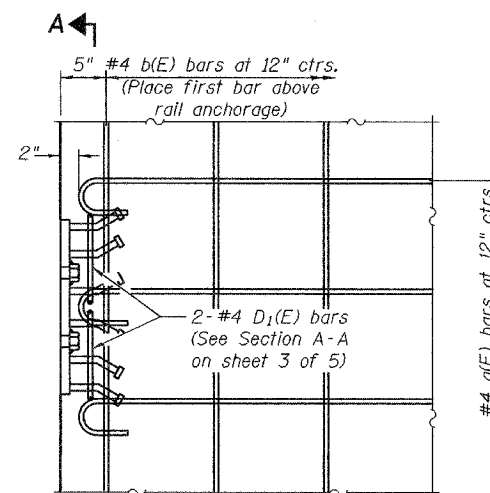


OVERLAY PLAN

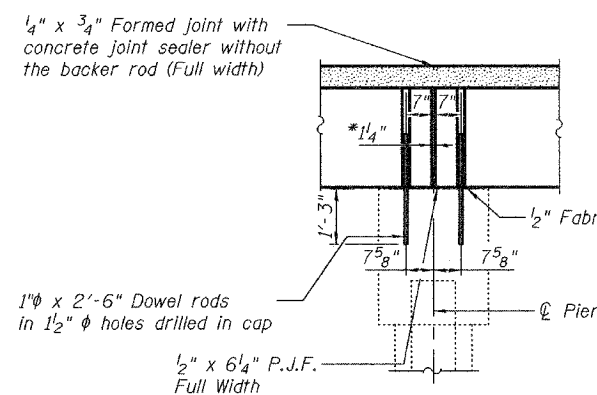


CONCRETE WEARING SURFACE PROFILE

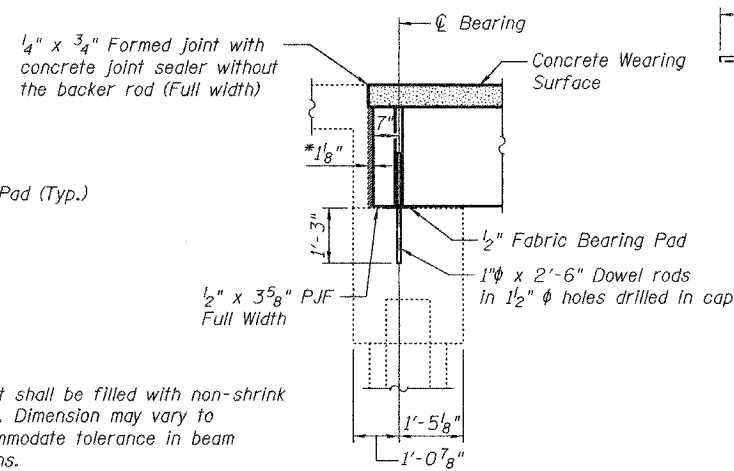
(Additional 1/4" thickness at Roadway to account for crown of Roadway.)



PARTIAL DECK PLAN AT RAIL ANCHORAGE



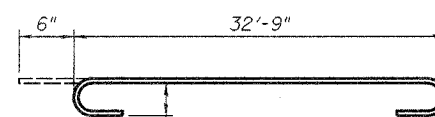
TYPICAL PIER SECTION



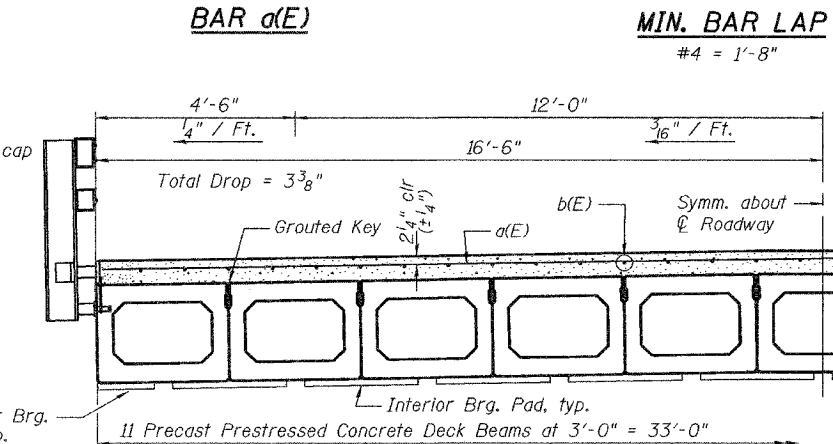
TYPICAL ABUTMENT SECTION

*Joint shall be filled with non-shrink grout. Dimension may vary to accommodate tolerance in beam lengths.

Note:
After beams have been erected, holes for dowel rods shall be drilled into substructure and dowel rods placed. Dowel holes shall be filled with non-shrink grout to top of beam and allowed to cure a minimum of 24 hours prior to grouting the shear keys.
Concrete wearing surface to be poured after grouting keys.



BAR a(E)



HALF CROSS SECTION

BILL OF MATERIAL

Bar	No.	Size	Length	Shape
a(E)	171	#4	33'-9"	—
a1(E)	2	#4	37'-9"	—
b(E)	186	#4	30'-0"	—
Reinforcement Bars, Epoxy Coated			Pound	7,630
Concrete Wearing Surface, 5"			Sq. Yd.	631

Reinforcement bars designated (E) shall be epoxy coated.
Bars indicated thus 1 x 2-#5 etc. indicates 1 line of bars with 2 lengths per line.

OVERLAY AND MISC DETAILS
F.A.S. RT. 203
WHITESIDE COUNTY
SN 098-0002

DESIGNED	P.S.J.
CHECKED	S.J.B.
DRAWN	Drew Christopher
CHECKED	P.S.J. S.J.B.

November 10, 2005
EXAMINED *John A. Morris*
ENGINEER OF STRUCTURAL SERVICES
PASSED *Ralph E. Anderson*
ENGINEER OF BRIDGES AND STRUCTURES