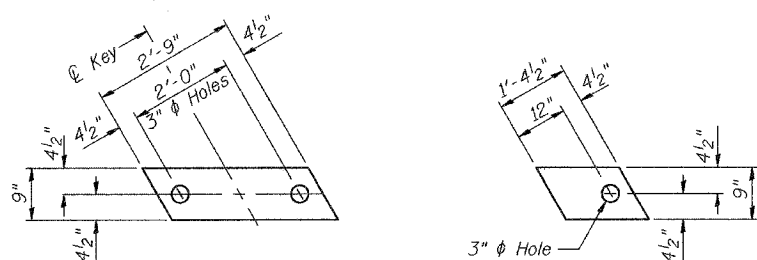


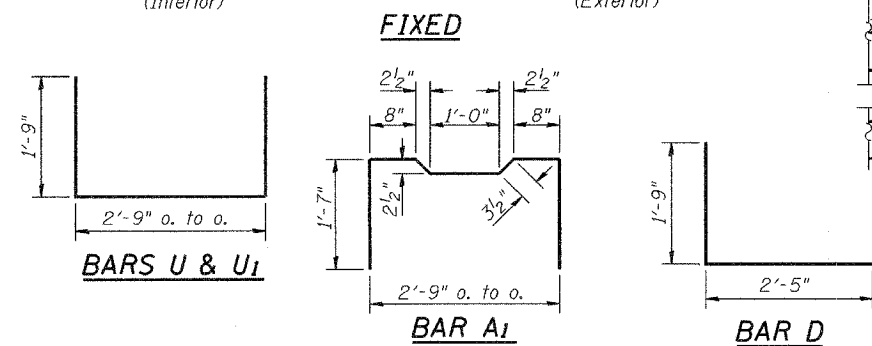
STATE OF ILLINOIS
DEPARTMENT OF TRANSPORTATION

ROUTE NO.	SECTION	COUNTY	TOTAL SHEETS	SHEET NO.
		Whiteside	13	3
FED. ROAD DIST. NO. 7			ILLINOIS	FED. AID PROJECT
			Contract Number: 64A51	5 SHEETS



FABRIC BEARING PAD
(Interior)

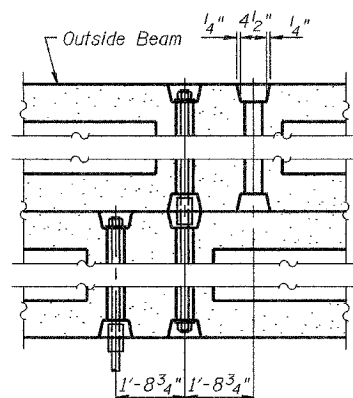
FABRIC BEARING PAD
(Exterior)



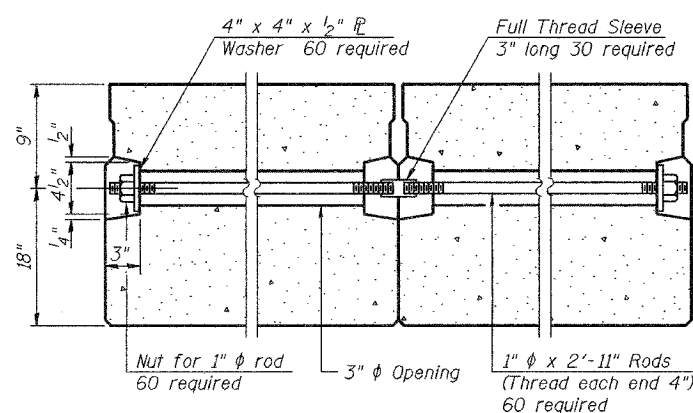
BARS U & U1

BAR A1

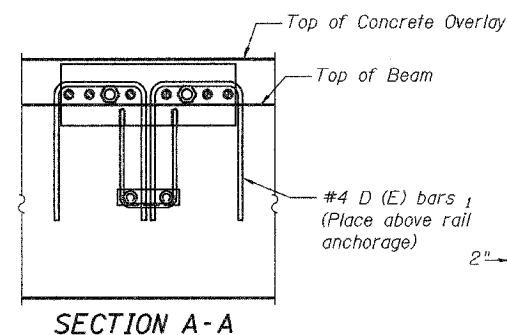
BAR D



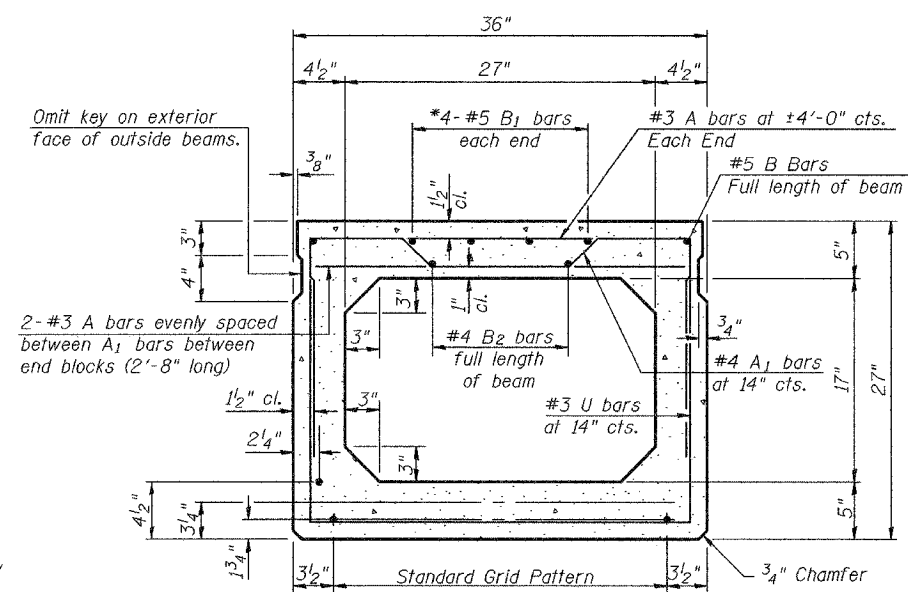
TYPICAL TRANSVERSE TIE ASSEMBLY



BAR D1(E)



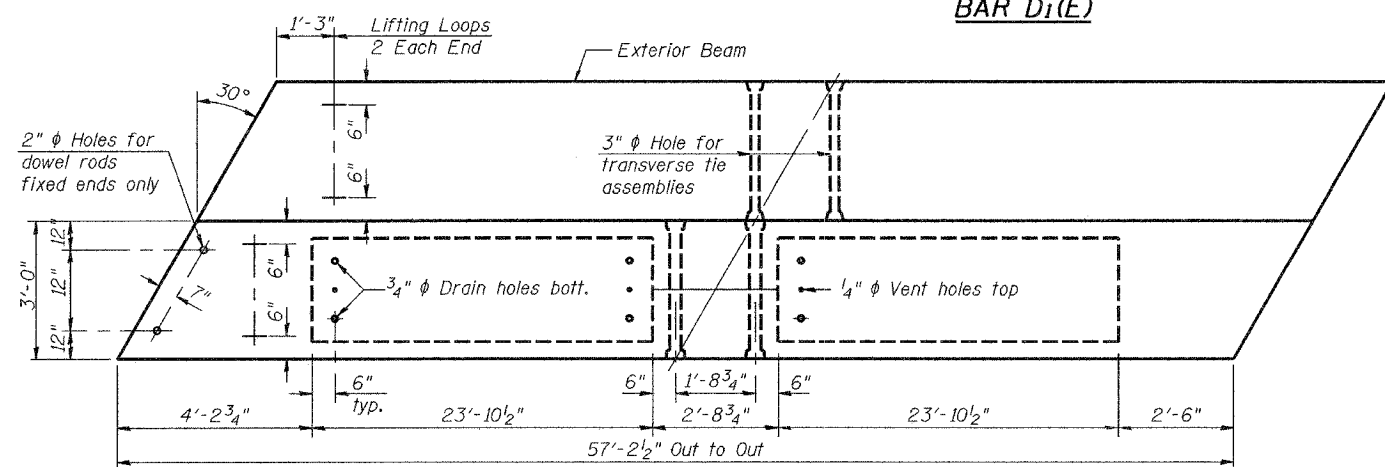
SECTION A-A



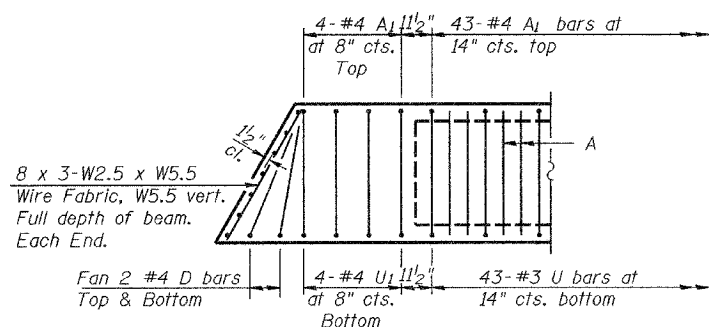
TYPICAL SECTION

1/2" ϕ Strands, Each Strand Stressed to 30,900 Lbs.
7-Strands 1 3/4" up, 4-Strands 3/4" up, 2-Strands 4 1/2" up

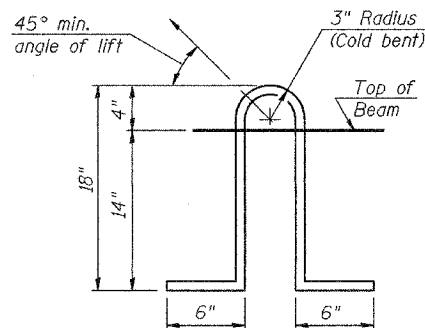
Note:
Place strands symmetrically about ϕ of beam.



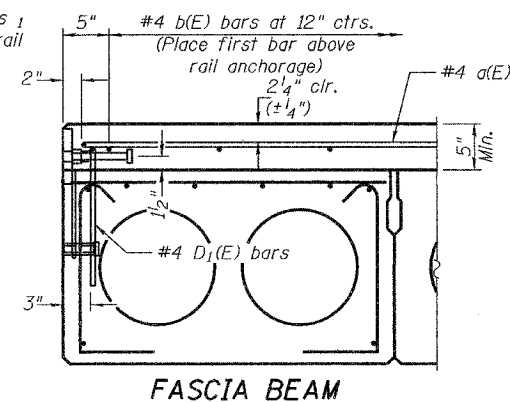
PLAN



END PLAN



LIFTING LOOP DETAIL



FASCIA BEAM

Rail anchorage shall be cast in precast beams. See typical section for dimensions, strand pattern, and bar callouts not shown.

Formwork necessary for the wearing surface may be secured utilizing the bottom rail inserts and/or additional inserts cast into the beam. Drilling into the beam will not be permitted.

NOTES

- Prestressing steel shall be uncoated high strength, low relaxation 7-wire strand, Grade 270. The nominal diameter shall be 1/2" and the nominal cross-sectional area shall be 0.153 sq. in. Lifting loops shall be 2 - 1/2" ϕ -270 ksi strands, as shown.
- The 1" ϕ rods in the transverse tie assembly shall be tightened to a snug fit and the threads set. Pockets that receive transverse tie bar on outside shall be filled with grout after transverse tie assembly is in place.
- Non prestressing steel shall conform to AASHTO M-31 or M322 Grade 60.
- The bearing seat surfaces shall be adjusted by shimming to assure firm and even bearing. Two 1/8" fabric adjusting shims of the dimensions of the Exterior Bearing Pad shall be provided for each bearing.
- Keyway surfaces shall be cleaned to remove form oil or other bond breaking material prior to shipment of the beams. Cleaning shall be done by sandblasting the keyway areas between top of the beam and the bottom edge of the key.
- Corrosion Inhibitor, as covered in the Special Provisions, shall be used in the concrete for precast prestressed concrete deck beams.
- Required Release Strength, f'_{ci} , shall be 4000 p.s.i.
- See sheet 4 of 5 for Rail Anchor locations.

BILL OF MATERIAL

Bar	No.	Size	Length	Shape
Precast Prestressed Conc. Deck Bms.			Sq. Ft.	5,664

BEAM DETAILS
F.A.S. RT. 203
WHITESIDE COUNTY
SN 098-0002

DESIGNED	P.S.J.
CHECKED	S.J.B.
DRAWN	Drew Christopher
CHECKED	P.S.J. S.J.B.

November 10, 2005
EXAMINED John A. Morris
ENGINEER OF STRUCTURAL SERVICES
PASSED Ralph E. Anderson
ENGINEER OF BRIDGES AND STRUCTURES

PD-5-L 10-22-04