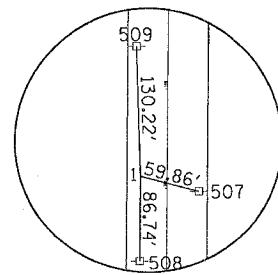
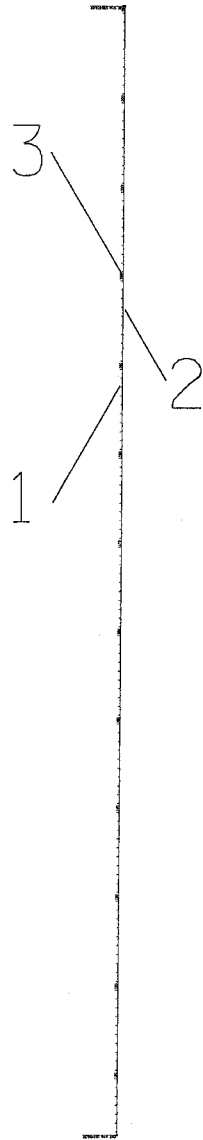


F.A.S. RTE.	SECTION	COUNTY	TOTAL SHEETS	SHEET NO.
221	19BR-1	ROCK ISLAND	29	7
STA.		TO STA.		
FED. ROAD DIST. NO.		ILLINOIS	FED. AID PROJECT	

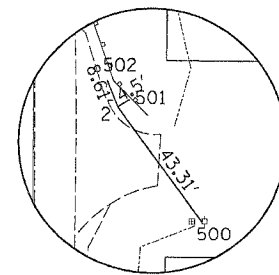
HORIZONTAL CONTROL POINTS							
POINT	NORTH	EAST	ELEVATION	CHAIN	STATION	OFFSET	DESCRIPTION
1	1713370.895	2158961.414	749.52	IL94	84+45.71	26.6056' LT	GPS CONTROL POINT, PIN
2	1714228.185	2159019.56	708.822	IL94	93+03.40	25.3172' RT	GPS CONTROL POINT, PIN
3	1714636.273	2158981.15	706.074	IL94	97+11.20	16.0534' LT	GPS CONTROL POINT, PIN
957175	1698711.819	2158506.5	808.294	IL94	OUT OF CHAIN	-----	DISTRICT NETWORK MONUMENT, PERM. SURVEY MARKER
957275	1698673.547	2156197.98	807.264	IL94	OUT OF CHAIN	-----	DISTRICT NETWORK MONUMENT, PERM. SURVEY MARKER

BENCH MARKS							
POINT	NORTH	EAST	ELEVATION	CHAIN	STATION	OFFSET	DESCRIPTION
402	1714340.406	2159012.698	707.287	IL94	94+15.57	17.641' RT	HEADWALL, PLUG

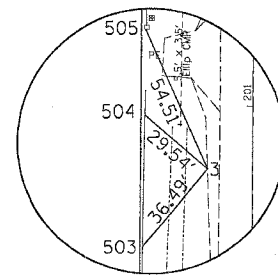
REFERENCE TIES					
POINT	CHAIN	STATION	OFFSET	DESCRIPTION	
500	IL94	92+68.54	51.0239' RT	POWER POLE, SHINER	
501	IL94	93+05.64	28.845' RT	GUARDPOST, SHINER	
502	IL94	93+11.38	22.0952' RT	MAILBOX, POLE	
503	IL94	96+82.73	38.8885' LT	FENCE POST, SHINER	
504	IL94	97+30.36	38.5291' LT	FENCE POST, SHINER	
505	IL94	97+60.86	38.5244' LT	POWER POLE, SHINER	
507	IL94	84+31.07	31.4392' RT	POWER POLE, SHINER	
508	IL94	83+58.97	26.5711' LT	POWER POLE, SHINER	
509	IL94	85+75.83	31.5211' LT	POWER POLE, SHINER	



HORIZONTAL CONTROL POINT No. 1



HORIZONTAL CONTROL POINT No. 2



HORIZONTAL CONTROL POINT No. 3

PLOT DATE = Wed Oct 26 11:08:19 2009
 FILE NAME = c:\projects\19br-1\19br-1\19br-1.dwg
 PLOT SCALE = 1/8" = 1'-0"
 USER NAME = mgj11j

REVISIONS		ILLINOIS DEPARTMENT OF TRANSPORTATION
NAME	DATE	
		SCALE: VERT. HORIZ. DATE
DRAWN BY		CHECKED BY