

F.A.P. RTE.	SECTION	COUNTY	TOTAL SHEETS	SHEET NO.
22	127BR-1	HENRY	33	1

PLANS ENGINEER: ROBERT WAGNER

STATE OF ILLINOIS
DEPARTMENT OF TRANSPORTATION
DIVISION OF HIGHWAYS

PROPOSED
HIGHWAY PLANS

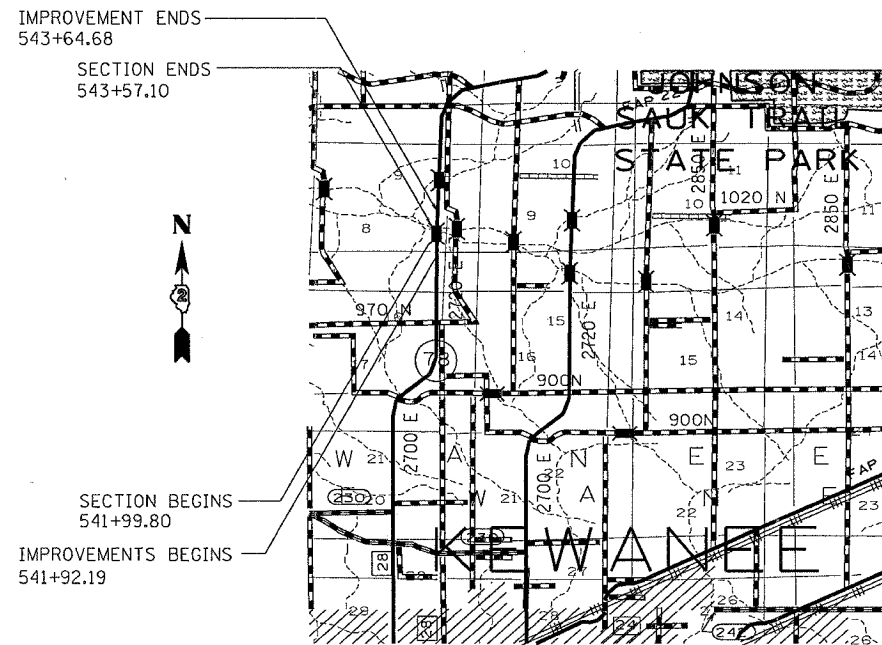
FAP ROUTE 22 (IL 78)
SECTION 127BR-1
PROJECT BHF-22(065)
HENRY COUNTY
C-92-155-05

INDEX OF SHEETS

- 1 COVER SHEET
- 2-3 SUMMARY OF QUANTITIES
- 4 GENERAL NOTES
- 5-6 TYPICAL SECTIONS
- 5 BUTT-JOINT DETAILS
- 7 SCHEDULE OF QUANTITIES
- 8 HORIZONTAL AND VERTICAL CONTROL
- 9-10 ROADWAY PLAN SHEETS
- 11-14 STAGING DETAILS
- 15 BRIDGE GENERAL PLAN AND ELEVATION
- 16 BRIDGE GENERAL NOTES, TOTAL BILL OF MATERIALS AND MISCELLANEOUS DETAILS
- 17 STAGING DETAILS
- 18-22 SUPERSTRUCTURE DETAILS
- 23 TYPE SM STEEL BRIDGE RAIL SIDE MOUNTED
- 24 BRIDGE JOINT SYSTEM - EXPANSION (ALTERNATE - STRIP SEAL)
- 25 BAR SPLICER ASSEMBLY DETAILS
- 26 ANCHOR BOLT DETAILS FOR BEARINGS
- 27 ABUTMENT DETAIL
- 28 ABUTMENT REPAIR DETAIL
- 29 PIER 1 REPAIR DETAILS
- 30 PIER 2 REPAIR DETAILS
- 31 DELINEATOR AND POST (37.4)
- 31 WITNESS MARKER FOR PERMANENT SURVEY MARKERS TYPE 2 (38.4)
- 31 STOP LINE FOR TEMPORARY SIGNAL (99.4)
- 32-33 TYPICAL PAVEMENT MARKINGS (41.1)

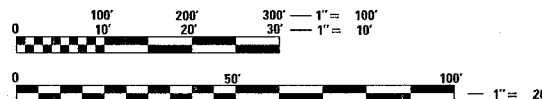
STATE STANDARDS

- 001001 AREAS OF REINFORCEMENT REBARS
- 001006 DECIMAL OF AN INCH AND A FOOT
- 420001-06 PAVEMENT JOINTS BARRIER
- 515001-02 NAME PLATE FOR BRIDGES
- 630001-05 STEEL PLATE BEAM GUARDRAIL
- 630301-03 SHOULDER WIDENING FOR TYPE 1 GUARDRAIL TERMINALS
- 631032-01 TRAFFIC BARRIER TERMINAL, TYPE 6A
- 635001 DELINEATORS
- 635006-02 REFLECTOR AND TERMINAL MARKER REPLACEMENT
- 635011-01 REFLECTOR MARKER AND MOUNTING DETAILS
- 667101 PERMANENT SURVEY MARKERS
- 701006-02 TYPICAL APPLICATION OF TRAFFIC CONTROL DEVICES
- 701201-02 TYPICAL APPLICATION OF TRAFFIC CONTROL DEVICES
- 701301-02 TYPICAL APPLICATION OF TRAFFIC CONTROL DEVICES
- 701311-02 TYPICAL APPLICATION OF TRAFFIC CONTROL DEVICES
- 701321-08 TYPICAL APPLICATION OF TRAFFIC CONTROL DEVICES
- 702001-05 TRAFFIC CONTROL DEVICES
- 704001-02 TEMPORARY CONCRETE
- 720011 METAL POSTS FOR SIGNS, MARKERS & DELINEATORS
- 780001-01 TYPICAL PAVEMENT MARKINGS
- 886001 DETECTOR LOOP INSTALLATIONS
- 886006 TYPICAL LAYOUT FOR DETECTION LOOPS



THIS PROJECT IS A BRIDGE DECK BEAM REPLACEMENT PROJECT ON A TRIPLE SPAN STRUCTURE WITH GUARDRAIL UPDATE AND STAGE CONSTRUCTION

GROSS LENGTH OF SECTION = 157.3 FEET = 0.030 MILES
NET LENGTH OF SECTION = 157.3 FEET = 0.030 MILES



FULL SIZE PLANS HAVE BEEN PREPARED USING STANDARD ENGINEERING SCALES. REDUCED SIZED PLANS WILL NOT CONFORM TO STANDARD SCALES. IN MAKING MEASUREMENTS ON REDUCED PLANS, THE ABOVE SCALES MAY BE USED.

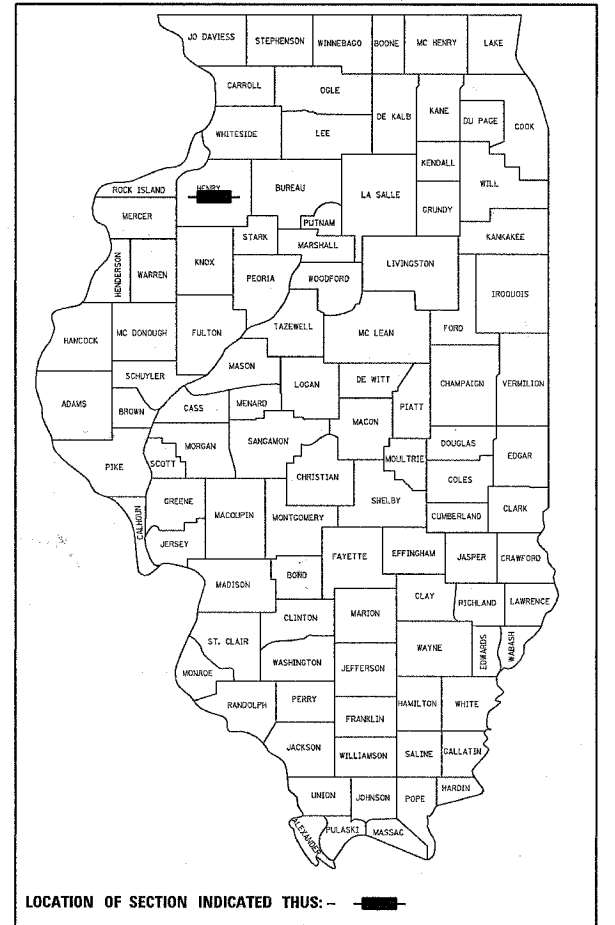
J.U.L.I.E.
JOINT UTILITY LOCATION INFORMATION FOR EXCAVATION
1-800-892-0123

HENRY COUNTY
KEWANEE TOWNSHIP, SECTION 9
T.15N. - R.5E.

CONTRACT NO. 64B24

SENIOR ENGINEER: THOMAS HALLA
PHONE: (815) 284-5993

D-92-087-05



STATE OF ILLINOIS
DEPARTMENT OF TRANSPORTATION
DIVISION OF HIGHWAYS

SUBMITTED Nov 4 20 05
[Signature]
DEPUTY DIRECTOR OF HIGHWAYS, REGION ENGINEER

December 9 20 05
[Signature]
ENGINEER OF DESIGN AND ENVIRONMENT

December 9 20 05
[Signature]
DEPUTY DIRECTOR OF HIGHWAYS, CHIEF ENGINEER

PRINTED BY THE AUTHORITY
OF THE STATE OF ILLINOIS