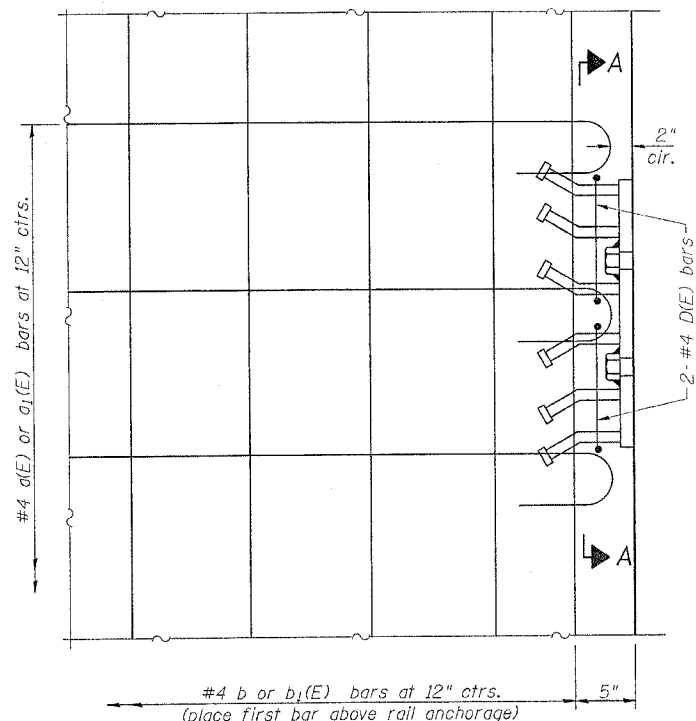


STATE OF ILLINOIS
DEPARTMENT OF TRANSPORTATION

ROUTE NO.	SECTION	COUNTY	TOTAL SHEETS	SHEET NO.	SHEET NO. 4 16 SHEETS
FAP 22	127BR-1	HENRY	33	18	
FED. ROAD DIST. NO. 7	ILLINOIS	FED. AID PROJECT			

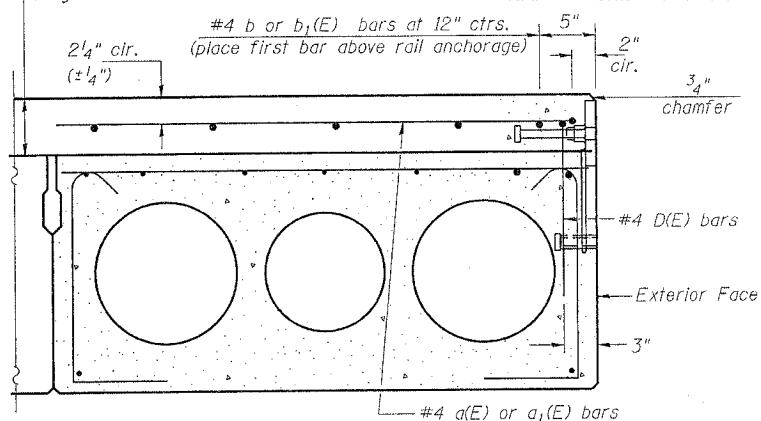
Contract # 64B24



PLAN VIEW

The rail anchorage shall be cast with the beam and the wearing surface shall be cast in the field. Formwork necessary for the wearing surface may be secured utilizing the bottom rail anchorage inserts and/or additional inserts cast into beam. Drilling into the beam will not be permitted.

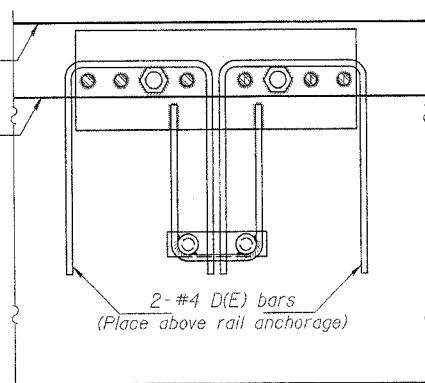
5" Min. & Varies See Profile Diagrams on Sheet 7 of 16



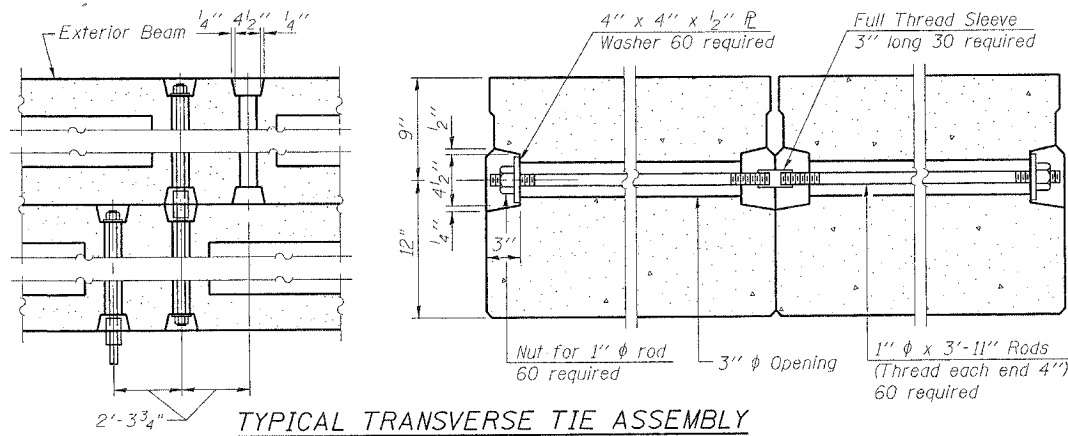
SECTION THRU EXTERIOR BEAMS

See Section Thru Interior Beams for strand pattern, dimensions and bar call outs.

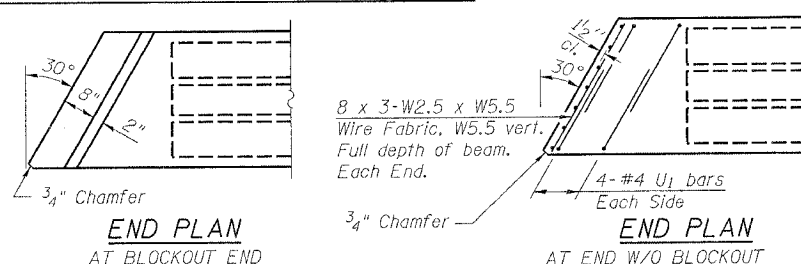
DESIGNED	BAS
CHECKED	KEF & RJA
DRAWN	
CHECKED	



SECTION A-A

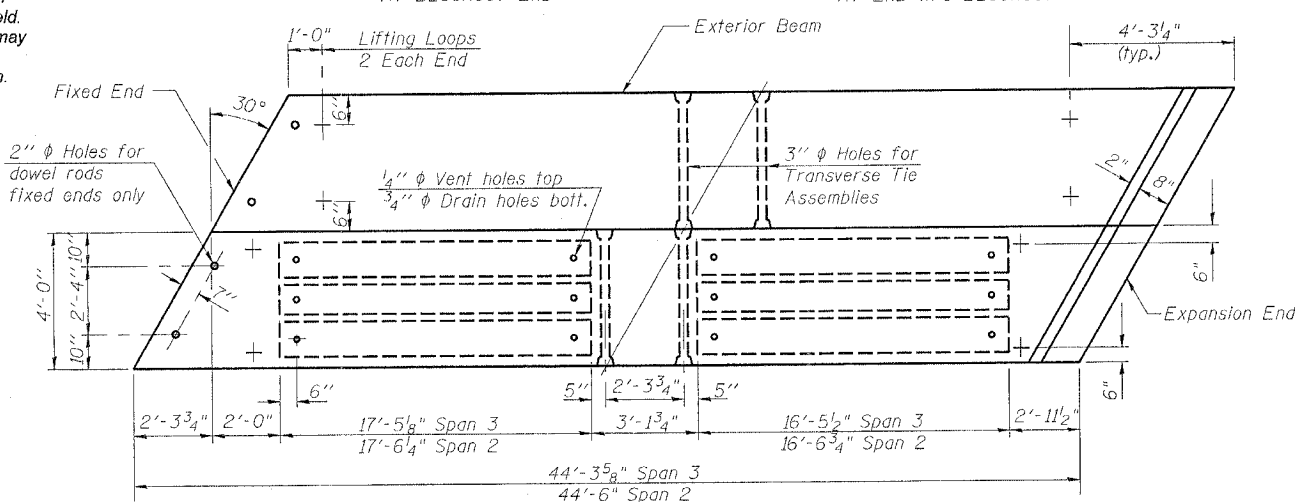


TYPICAL TRANSVERSE TIE ASSEMBLY

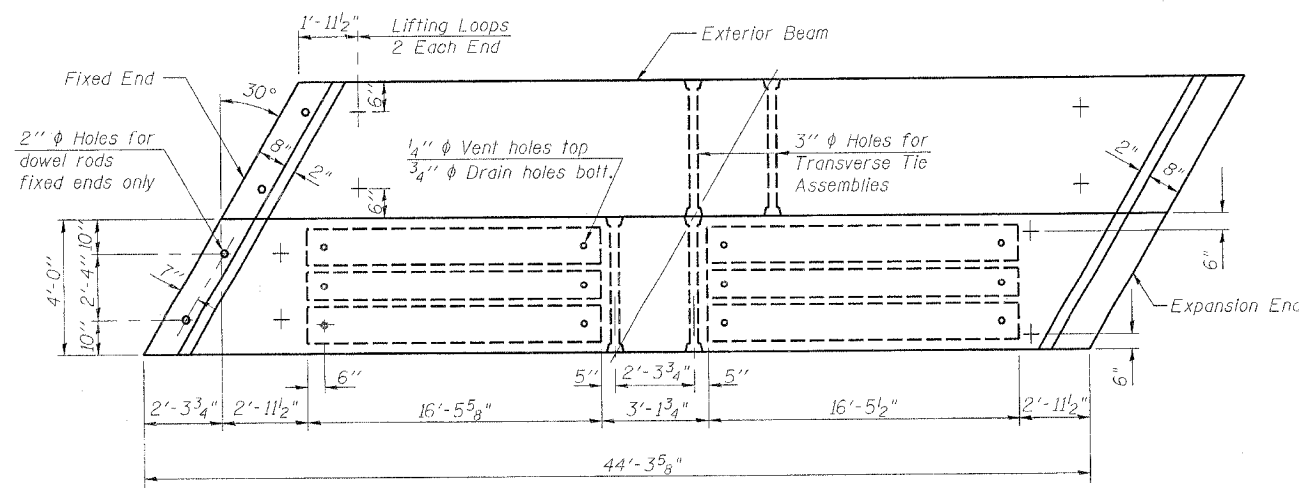


END PLAN AT BLOCKOUT END

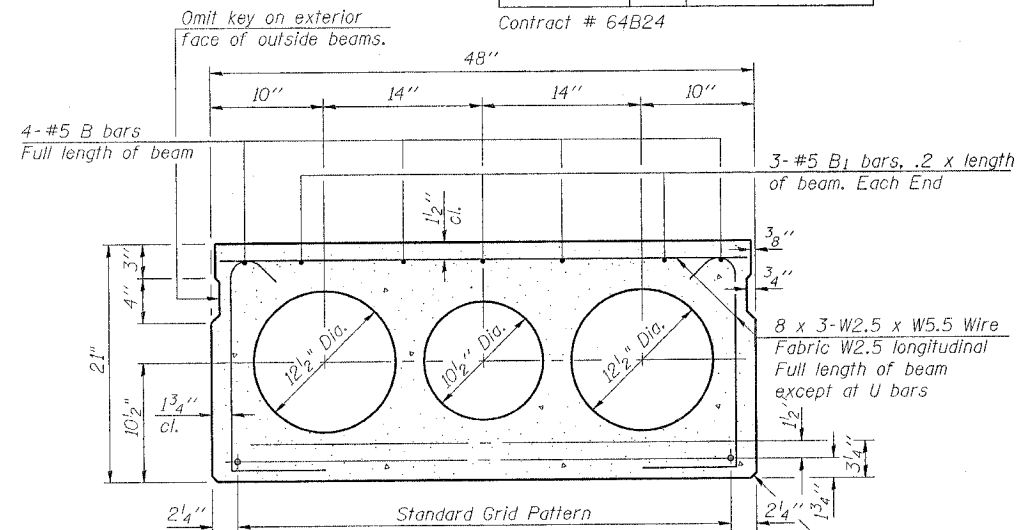
END PLAN AT END W/O BLOCKOUT



PLAN (Spans 2 & 3)



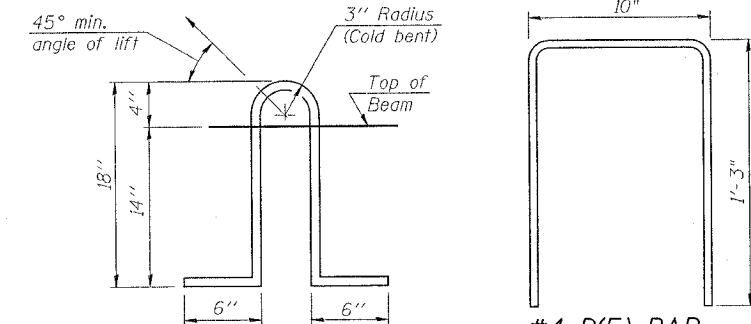
PLAN (Span 1)



TYPICAL SECTION - INTERIOR BEAMS

1/2" ϕ Strands, Each Strand Stressed to 30,900 Lbs.
8 Strands 1 3/4" up, 7 Strands 3/4" up, 2 Strands 6" up

Note: Place strands symmetrically about ϕ of beam.



LIFTING LOOP DETAIL

#4 D(E) BAR

NOTES

- Prestressing steel shall be uncoated high strength, low relaxation 7-wire strand, Grade 270. The nominal diameter shall be 1/2" and the nominal cross-sectional area shall be 0.153 sq. in.
- Lifting loops shall be 2 - 1/2" ϕ - 270 ksi strands, as shown.
- The 1" ϕ rods in the transverse tie assembly shall be tightened to a snug fit and the threads set. Pockets that receive transverse tie bar on outside shall be filled with grout after transverse tie assembly is in place.
- Non prestressing steel shall conform to AASHTO M-31 or M-322 Grade 60.
- The bearing seat surfaces shall be adjusted by shimming to assure firm and even bearing. Two 1/8" fabric adjusting shims of the dimensions of the Exterior Bearing Pad shall be provided for each bearing.
- Keyway surfaces shall be cleaned to remove form oil or other bond breaking material prior to shipment of the beams. Cleaning shall be done by sandblasting the keyway areas between top of the beam and the bottom edge of the key.
- Corrosion Inhibitor, as covered in the Special Provisions, shall be used in the concrete for precast prestressed concrete deck beams.
- Required Release Strength, f'ci, shall be 4,000 p.s.i.
- Bridge rail inserts shall be cast in precast beams.
- See Sheet 2 of 16 for location of rail inserts.

SUPERSTRUCTURE DETAILS
IL 78 OVER MUD CREEK
F.A.P. RTE. 22 - SECTION 127BR-1
HENRY COUNTY
STA. 542+78.43 - STR. NO. 037-0125