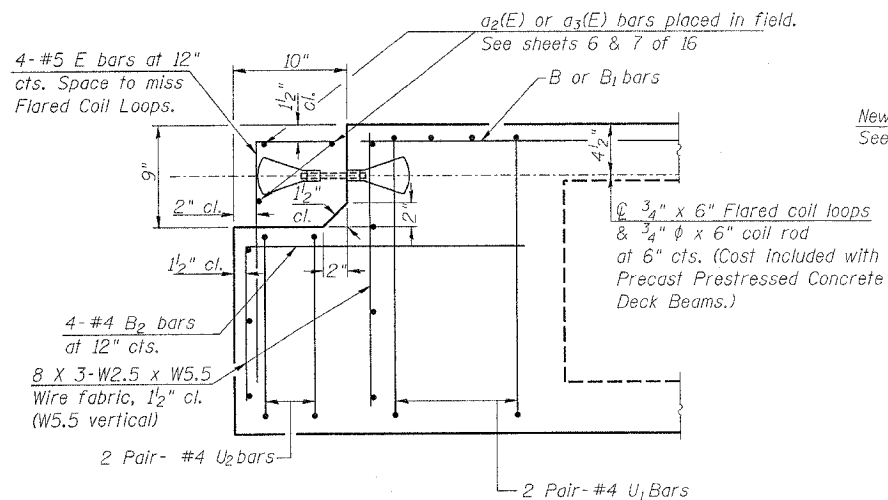


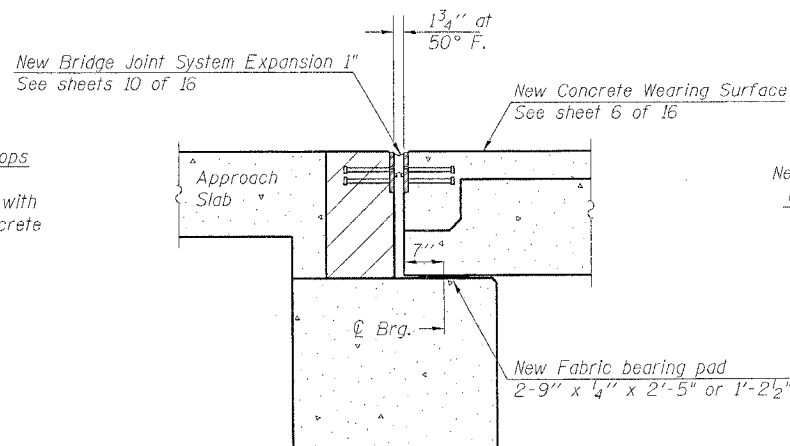
STATE OF ILLINOIS
DEPARTMENT OF TRANSPORTATION

ROUTE NO.	SECTION	COUNTY	JOB SHEETS	SHEET NO.	SHEET NO. 5 16 SHEETS
FAP 22	127BR-1	HENRY	33	19	
FED. ROAD DIST. NO. 7		ILLINOIS	FED. AID PROJECT-		

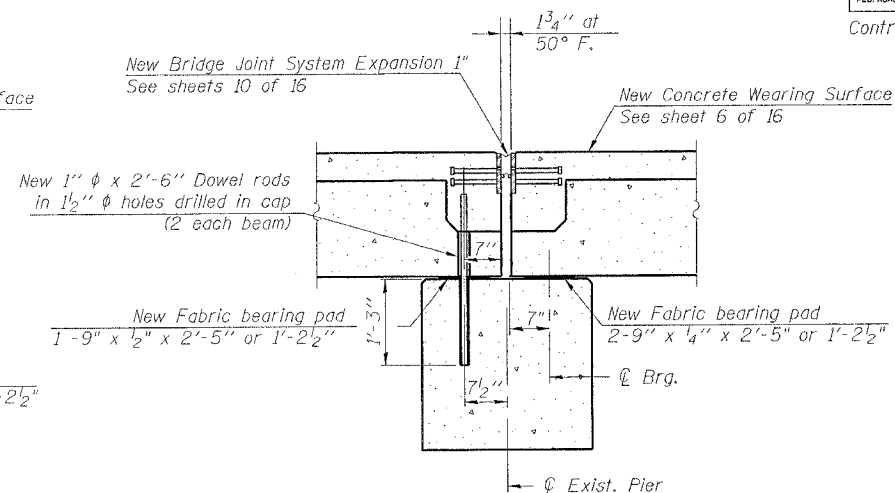
Contract # 64B24



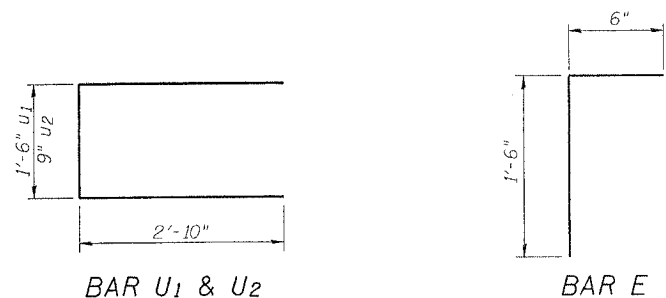
END OF BEAM (EXP. END)



SECTION THRU ABUTMENT



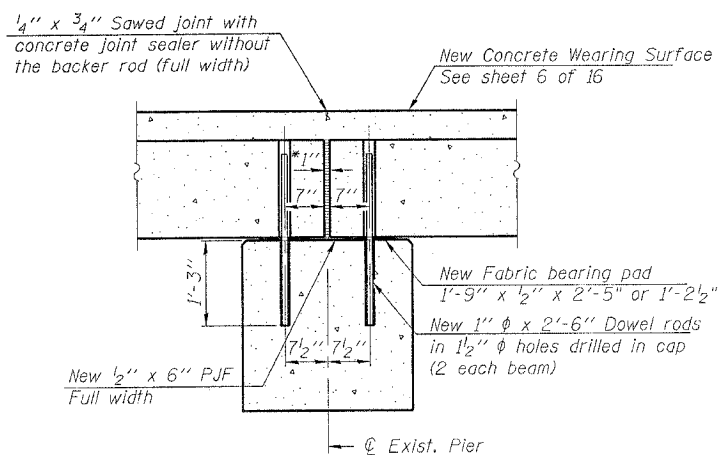
SECTION THRU PIER 1



BAR U1 & U2

BAR E

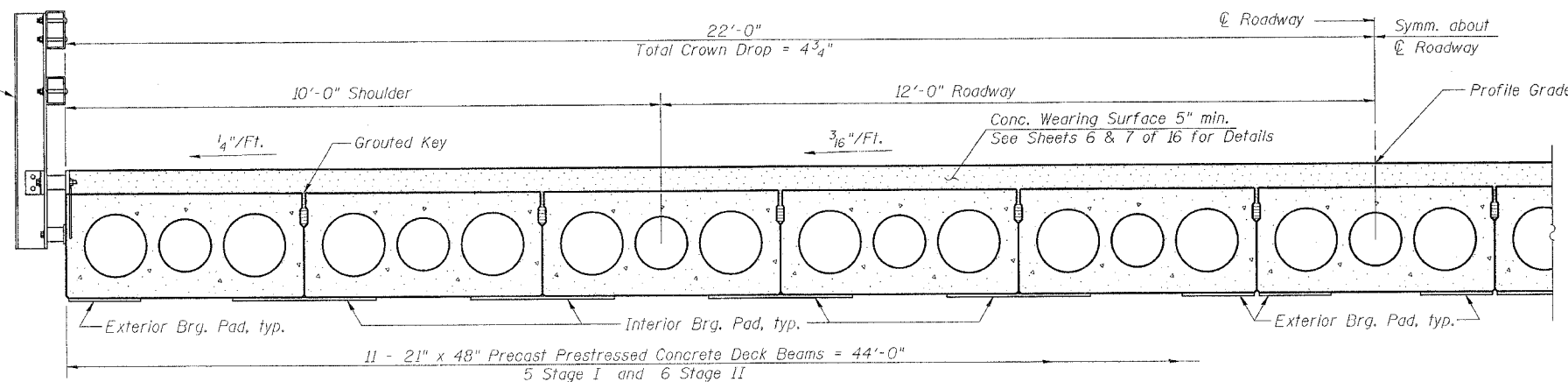
Notes:
After beams have been erected, holes shall be drilled into substructure and anchor dowels placed. Dowel holes shall be filled with non-shrink grout to top of beam and allowed to cure min. 24 hrs. prior to grouting the shear keys.
All horizontal dimensions are at right angles to beam ends.
Hatched area to be poured after beams are in place.



SECTION THRU PIER 2

* 1" Jt. shall be filled with non-shrink grout. 1" dimension may vary to accommodate tolerance in beam lengths.

Steel Bridge Rail,
Type SM - See
Sheet 9 of 16

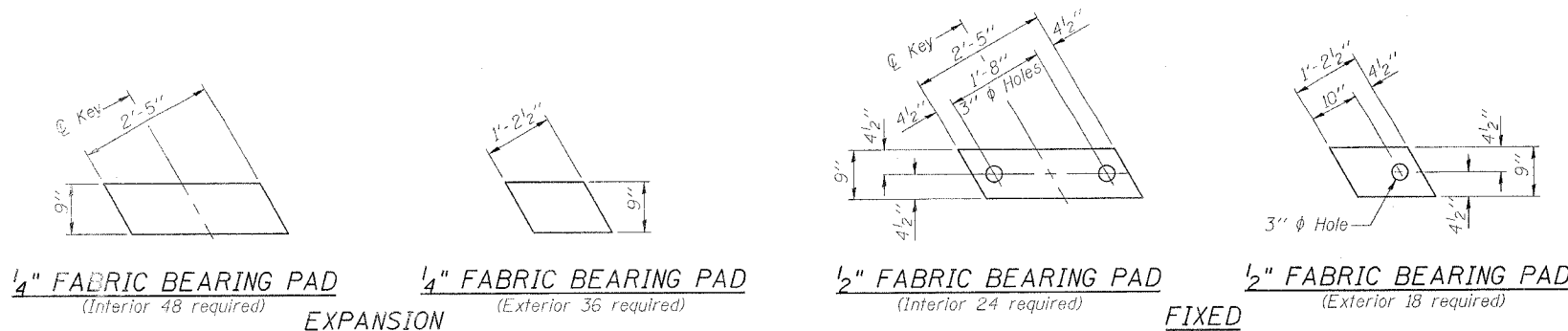


HALF CROSS SECTION

BILL OF MATERIALS

Item	Unit	Quantity
Precast Prestressed Conc. Deck Beams (21" Depth)	Sq. Ft.	5858

DESIGNED	BAS
CHECKED	KEF & RJA
DRAWN	
CHECKED	



SUPERSTRUCTURE DETAILS
IL 78 OVER MUD CREEK
F.A.P. RTE. 22 - SECTION 127BR-1
HENRY COUNTY
STA. 542+78.43 - STR. NO. 037-0125