

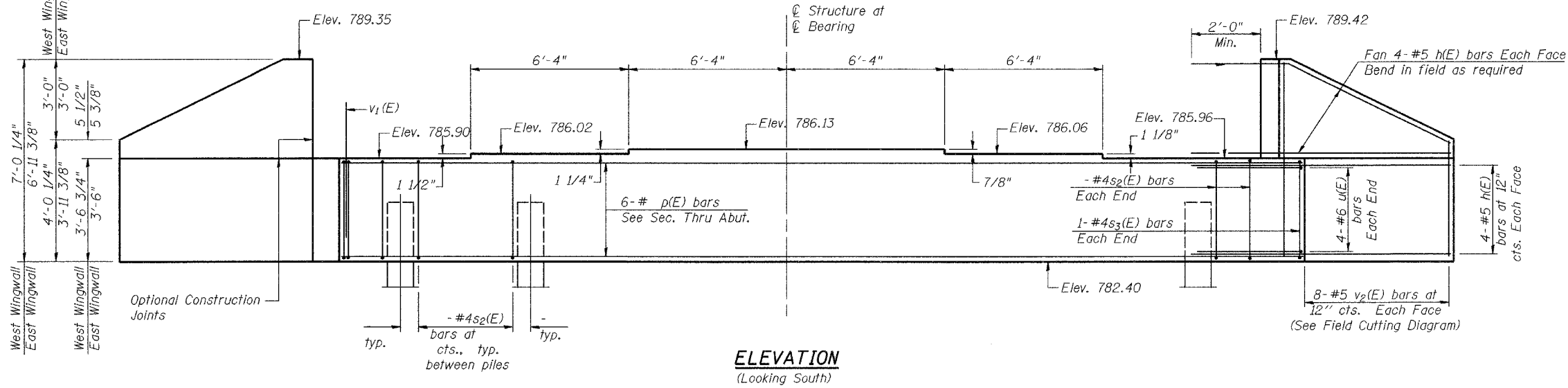
STATE OF ILLINOIS
DEPARTMENT OF TRANSPORTATION

ROUTE NO. FAP 553	SECTION 125 VBR-1F	COUNTY DEKALB	TOTAL SHEETS 15	SHEET NO. 13
FED. ROAD DIST. NO. 1		ILLINOIS	FED. AID PROJECT-	

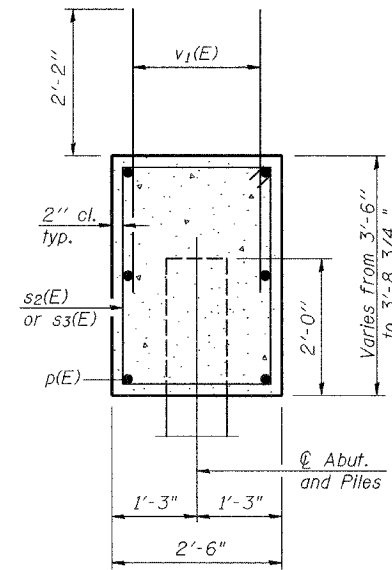
SHEET NO. 11
13 SHEETS

Contract #64B90

Notes: Four steps monolithically with cap.
Reinforcement bars designated (E)
shall be epoxy coated.



ELEVATION
(Looking South)

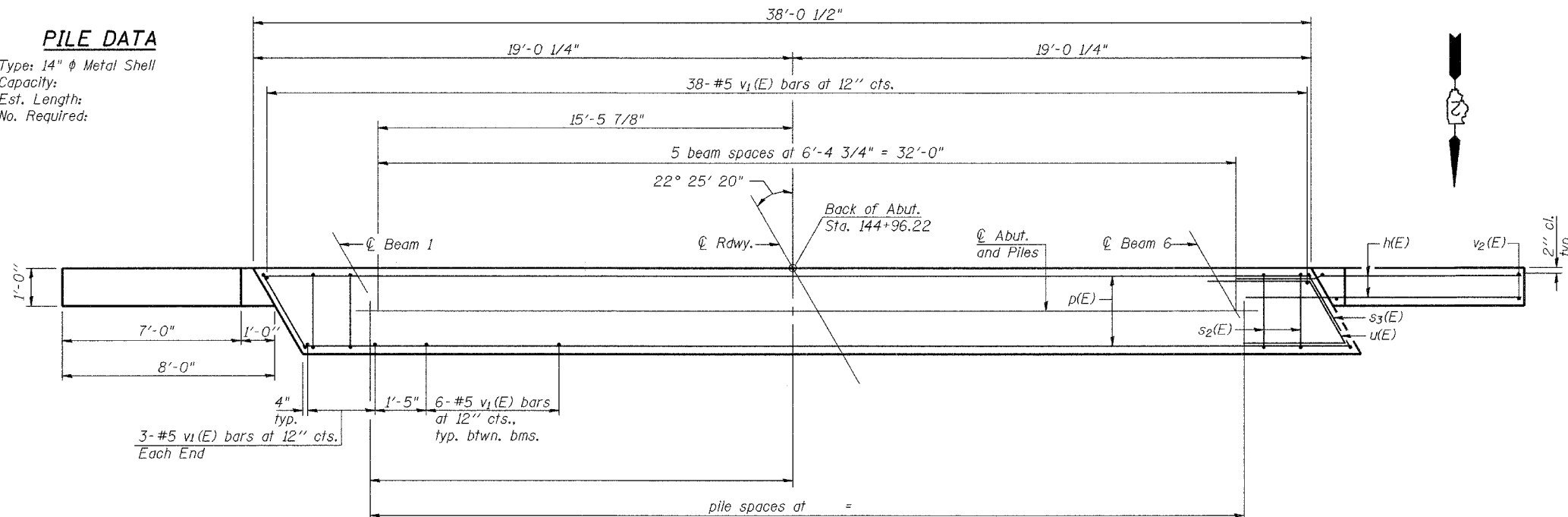


SEC. THRU ABUT.

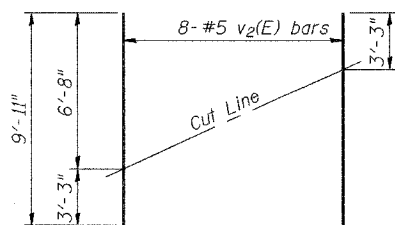
FOR INFORMATION ONLY

PILE DATA

Type: 14" ϕ Metal Shell
Capacity:
Est. Length:
No. Required:

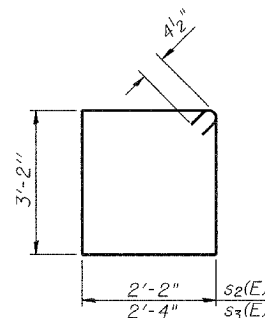


PLAN

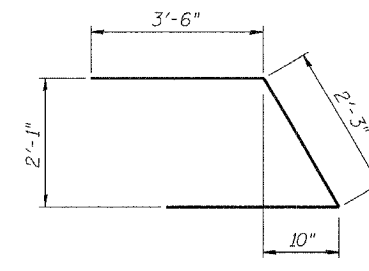


FIELD CUTTING DIAGRAM

Order v2(E) full length. Cut as shown and use remainder of bars in opposite face.



BARS s2(E) & s3(E)



BAR u(E)

BILL OF MATERIAL

Bar	No.	Size	Length	Shape
h(E)	32	#5	9'-9"	—
p(E)	6	#7	37'-9"	—
s2(E)		#4	11'-5"	□
s3(E)	2	#4	11'-9"	□
u(E)	8	#6	9'-3"	└
v1(E)	74	#5	4'-4"	—
v2(E)	16	#5	9'-11"	—
Concrete Structures			Cu. Yd.	
Reinforcement Bars, Epoxy Coated			Pound	
Structure Excavation			Cu. Yd.	

**SOUTH ABUTMENT
IL RTE 72 OVER
IOWA CHICAGO & EASTERN RAILROAD
FAP ROUTE 553
SECTION 125VBR-1F
DEKALB COUNTY
STA. 144+14.40
SN 019-0047**

DESIGNED	JDA
CHECKED	JKC
DRAWN	ARR
CHECKED	JKC

AI-L 10-22-04