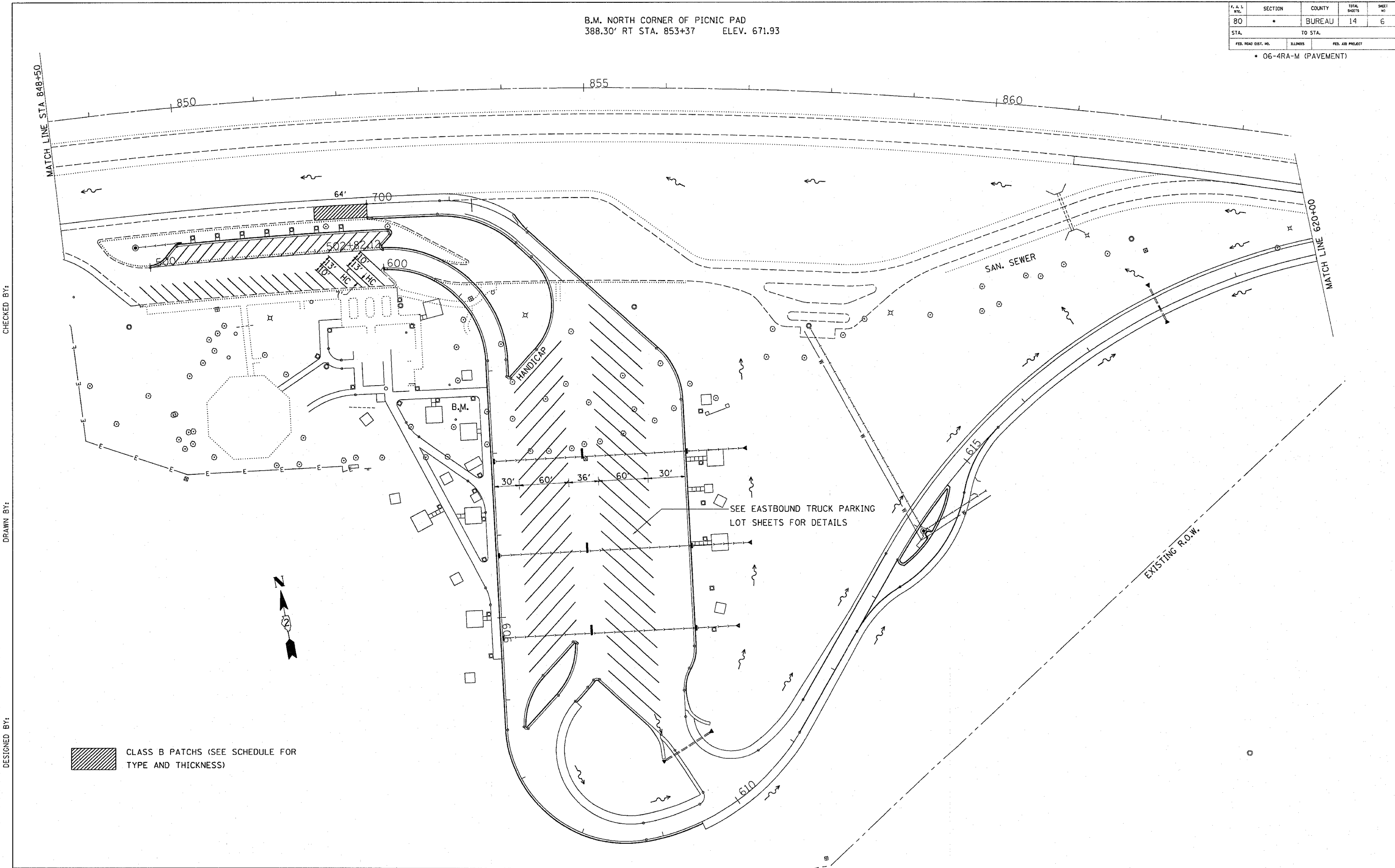



F. A. I. DIST.	SECTION	COUNTY	TOTAL SHEETS	SHEET NO.
80	*	BUREAU	14	6
STA.		TO STA.		
FED. ROAD DIST. NO.	ILLINOIS	FED. AID PROJECT		

\* 06-4RA-M (PAVEMENT)

B.M. NORTH CORNER OF PICNIC PAD  
388.30' RT STA. 853+37 ELEV. 671.93



 CLASS B PATCHES (SEE SCHEDULE FOR TYPE AND THICKNESS)

CHECKED BY:

DRAWN BY:

31-MAR-90 09:55:03  
Z:\P1111\003\20068644.DGN:3  
LEVELS = 2-68-1012,14,16,18,20,22,24,25,27-29,35,37-40,42,44-55,57,58  
DESIGNED BY: