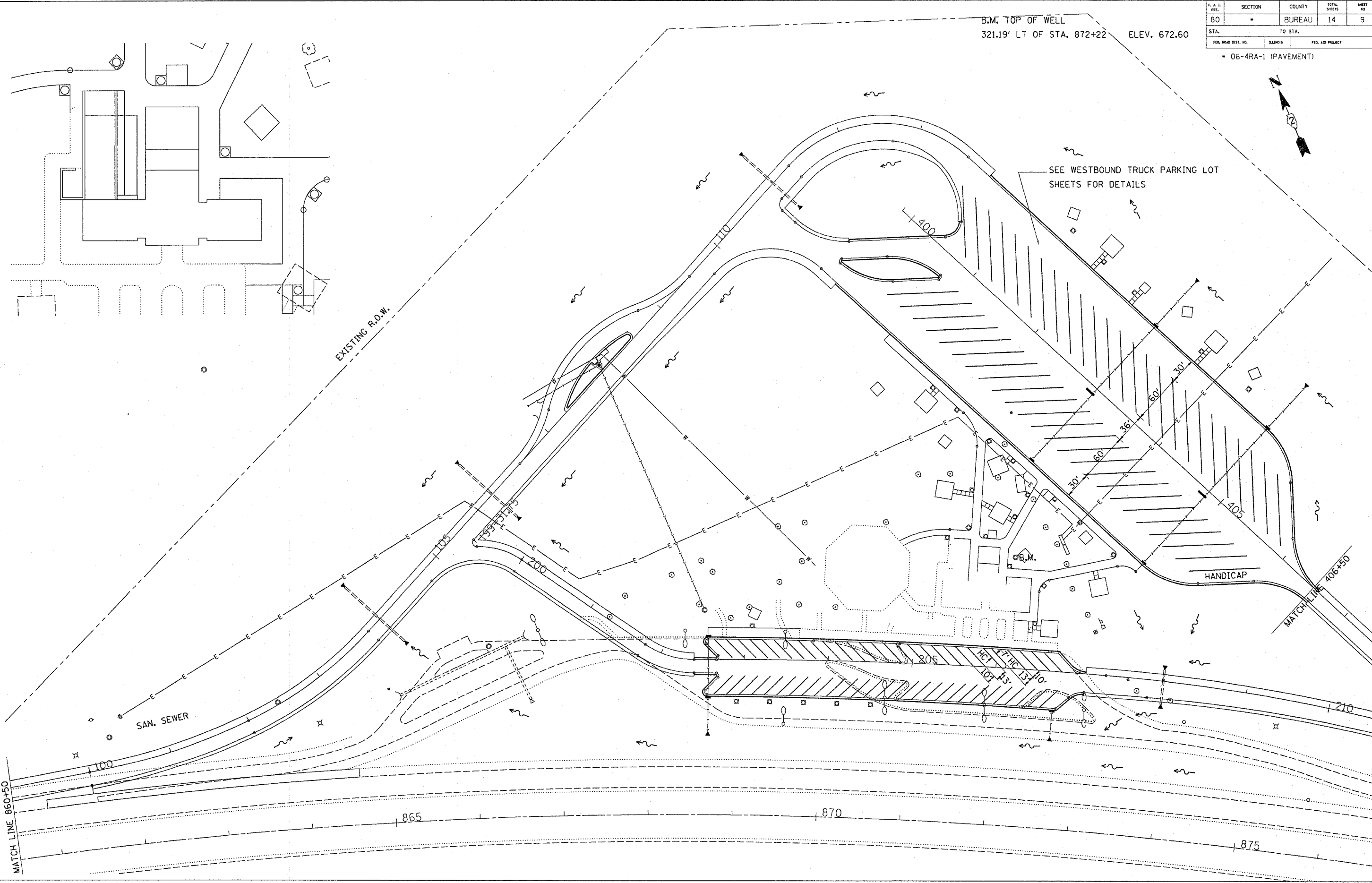


F. A. L. MILE	SECTION	COUNTY	TOTAL SHEETS	SHEET NO.
80	*	BUREAU	14	9
STA.		TO STA.		
FED. ROAD DIST. NO.		ILLINOIS		FED. AID PROJECT

\* 06-4RA-1 (PAVEMENT)

B.M. TOP OF WELL  
321.19' LT OF STA. 872+22 ELEV. 672.60

SEE WESTBOUND TRUCK PARKING LOT SHEETS FOR DETAILS



CHECKED BY:

DRAWN BY:

DESIGNED BY:

31-MAR-90 09:55:03  
ZF1H111.003ZF200686AA.DON3  
LEVELS = 2-6,8-10,12,14,16,18,20,22,24,25,214-29,35,37-40,42,44-55,57,58