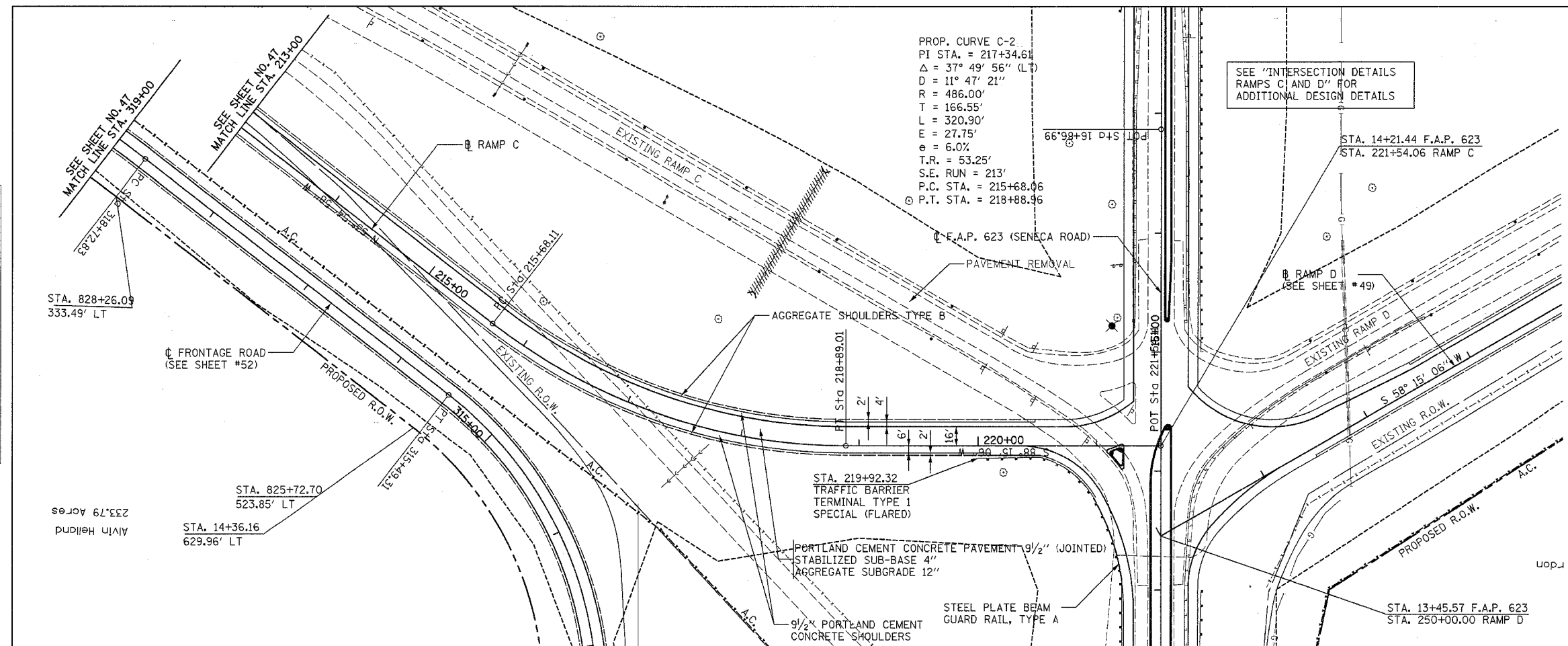


F.A.I. RTE.	SECTION	COUNTY	TOTAL SHEETS	SHEET NO.
80	32-2HBR	GRUNDY	171	48

STA.	TO STA.
FED. ROAD DIST. NO.	ILLINOIS FED. AID PROJECT
CONTRACT NO.	66412



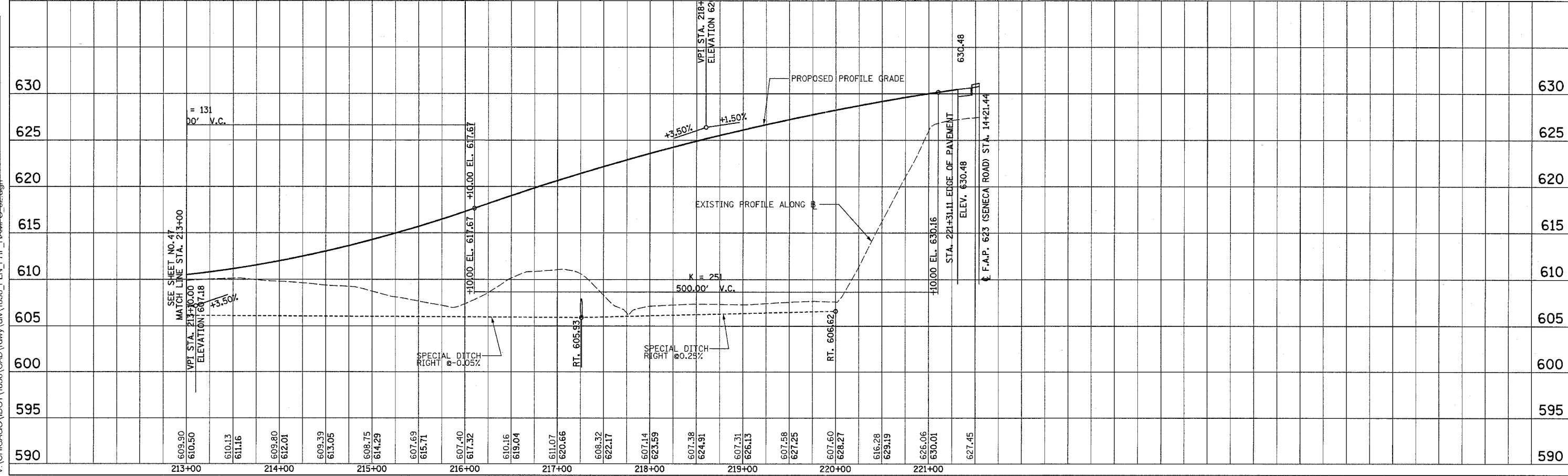
PLAN	DATE	BY
SURVEYED		
ALIGNED		
CHECKED		
DATE		
NO.		



PROP. CURVE C-2
 PI STA. = 217+34.61
 $\Delta = 37^\circ 49' 56''$ (LT)
 $D = 11^\circ 47' 21''$
 $R = 486.00'$
 $T = 166.55'$
 $L = 320.90'$
 $E = 27.75'$
 $e = 6.0\%$
 $T.R. = 53.25'$
 $S.E. RUN = 213'$
 $P.C. STA. = 215+68.06$
 $P.T. STA. = 218+88.96$

SEE "INTERSECTION DETAILS RAMP C AND D" FOR ADDITIONAL DESIGN DETAILS

PROFILE	DATE	BY
SURVEYED		
GRADES CHECKED		
STRUCTURE NOTINGS OK'D		
NO.		



11/4/2005
 V:\CHICAGO\DOT\1836\CAD\rdwy\div\1836_PLN_PRF_RAMP_C-02.dwg

PROPOSED RAMP C