

F.A.I. RTE.	SECTION	COUNTY	TOTAL SHEETS	SHEET NO.
80	32-2HBR	GRUNDY	171	52
STA.		TO STA.		
FED. ROAD DIST. NO.		ILLINOIS FED. AID PROJECT		
CONTRACT NO.		66412		

PROP. CURVE F-2
 PI STA. = 314+13.52
 $\Delta = 52^\circ 16' 54''$ (LT)
 $D = 17^\circ 47' 37''$
 $R = 322.00'$
 $T = 158.03'$
 $L = 293.82'$
 $E = 36.69'$
 $e = 4.0\%$
 $T.R. = 49.21'$
 $S.E. RUN = 98.42'$
 $P.C. STA. = 312+55.49$
 $P.T. STA. = 315+49.31$
 $STA. 824+59.67$
 $745.46' LT$
 $STA. 12+12.76$
 $520.49' LT$

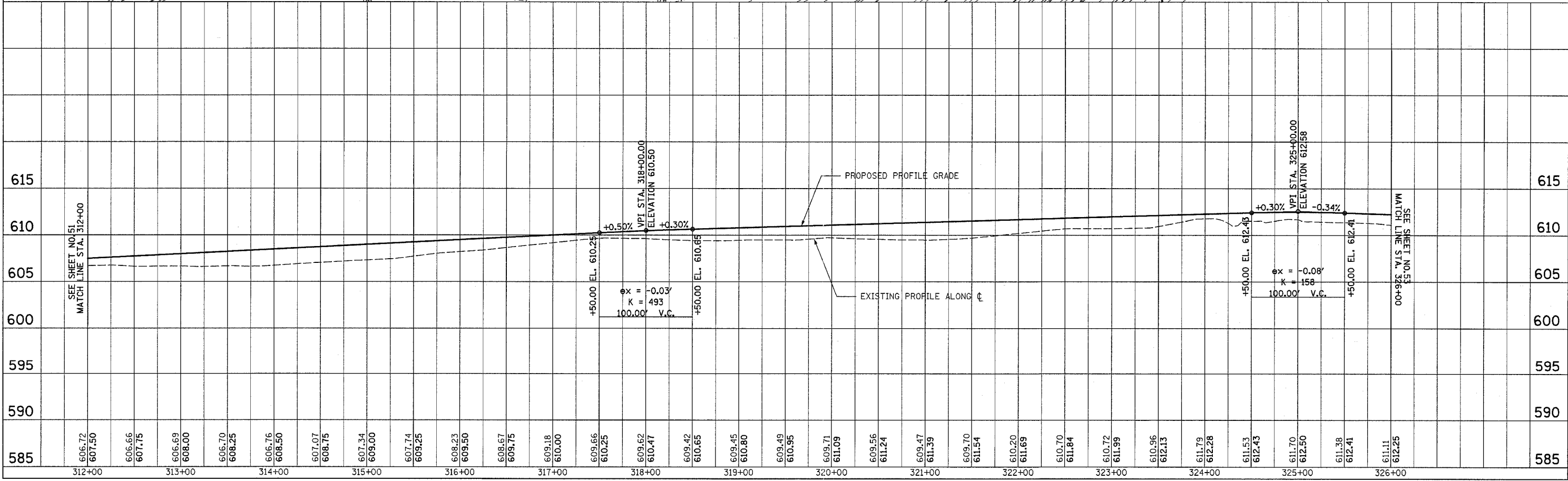
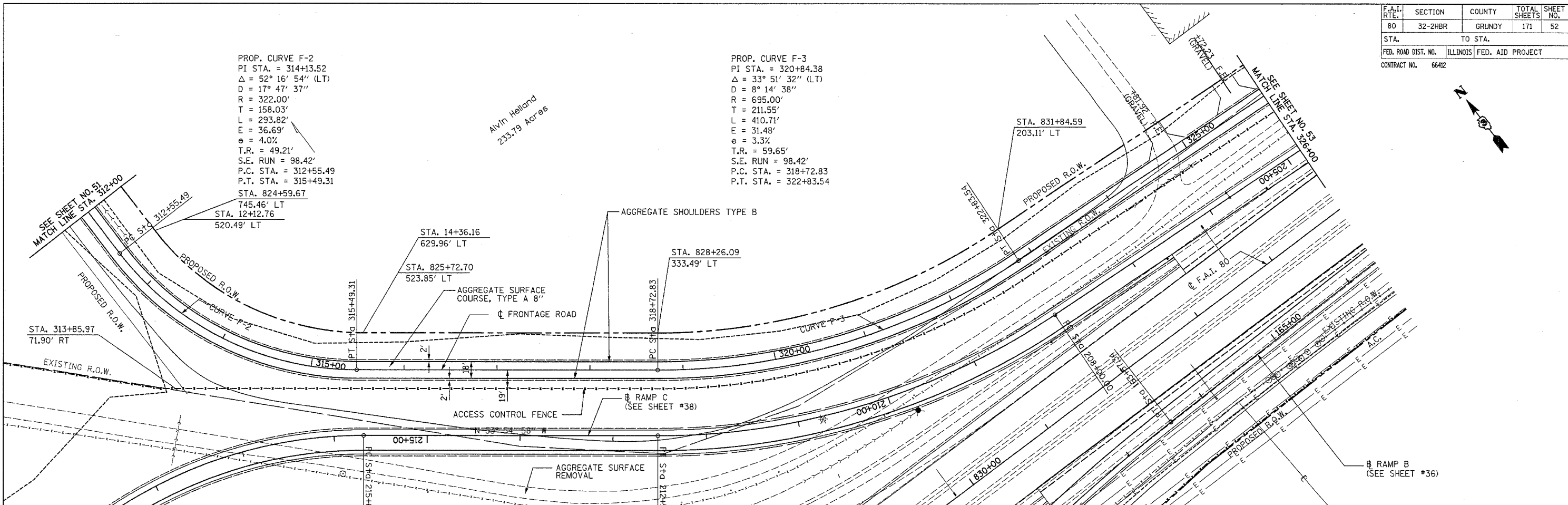
PROP. CURVE F-3
 PI STA. = 320+84.38
 $\Delta = 33^\circ 51' 32''$ (LT)
 $D = 8^\circ 14' 38''$
 $R = 695.00'$
 $T = 211.55'$
 $L = 410.71'$
 $E = 31.48'$
 $e = 3.3\%$
 $T.R. = 59.65'$
 $S.E. RUN = 98.42'$
 $P.C. STA. = 318+72.83$
 $P.T. STA. = 322+83.54$

Alvin Holland
 233.79 Acres

PLAN	DATE	BY
SURVEYED		
DESIGNED		
CHECKED		
APPROVED		
NO. _____		
FILE NAME _____		

PROFILE	DATE	BY
DESIGNED		
CHECKED		
APPROVED		
NO. _____		
FILE NAME _____		

11/14/2005
 V:\CHICAGO\DOT\1836\CAD\dwg\1836_PLN_PRF_FRNTG-02.dwg



PROPOSED FRONTAGE ROAD