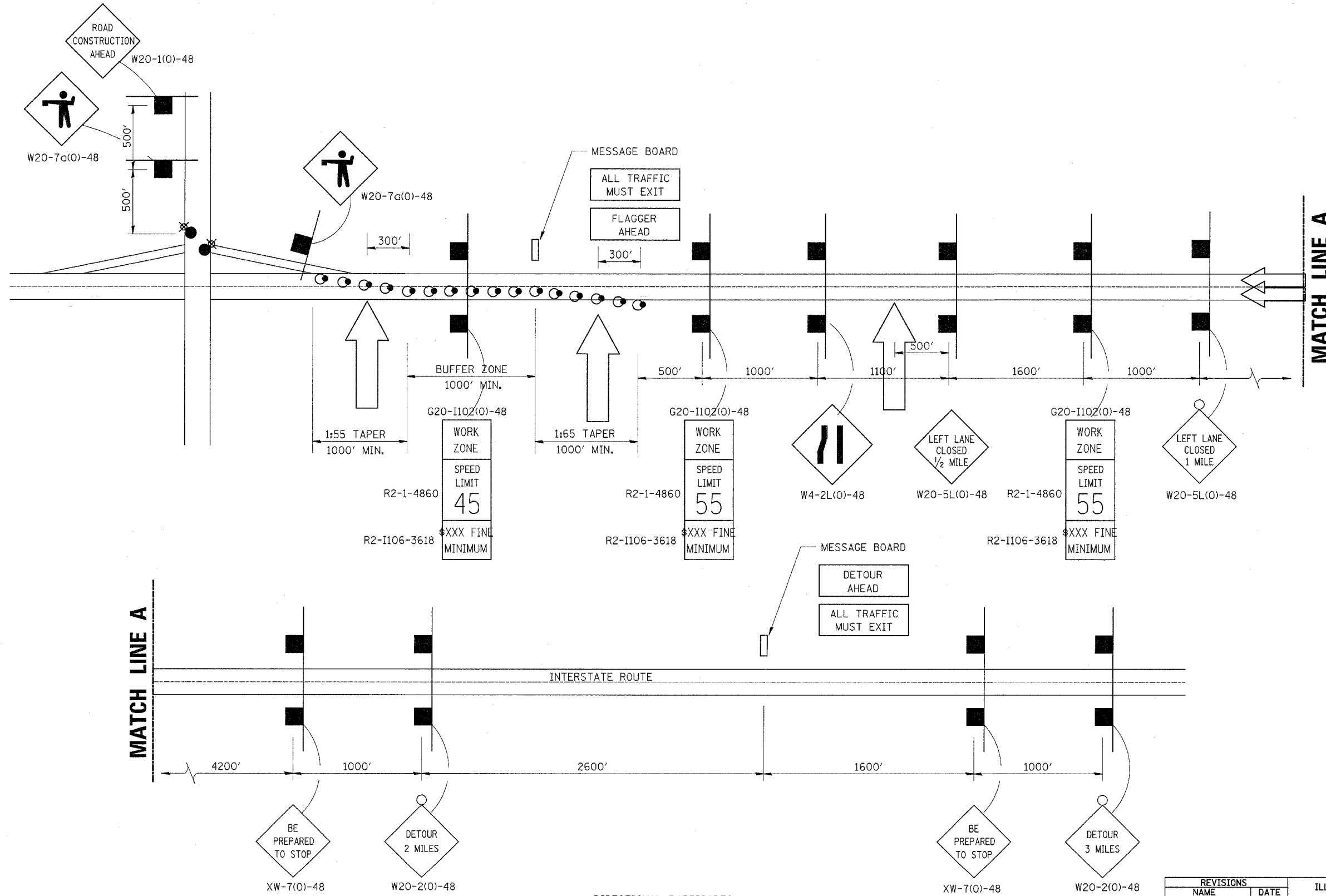


F.A.I. RTE.	SECTION	COUNTY	TOTAL SHEETS	SHEET NO.
80	32-2HBR	GRUNDY	171	65
STA.		TO STA.		
FED. ROAD DIST. NO.		ILLINOIS FED. AID PROJECT		
CONTRACT NO. 66412				



- DIRECTIONAL BARRICADES
50' IN TAPERS AND 100' IN TANGENT ON CENTERS
- LIGHTED FLAGGER STATIONS
- ← ARROWBOARD

REVISIONS	
NAME	DATE

ILLINOIS DEPARTMENT OF TRANSPORTATION
**I-80 (F.A.I. 80) AT
 SENECA ROAD (F.A.P. 623)
 GRUNDY COUNTY**
 TOTAL INTERSTATE CLOSURE
 AT NIGHT
 (ALL TRAFFIC MUST EXIT)
 SCALE: N.T.S. DRAWN BY NMR/BJG
 DATE 10/14/05 CHECKED BY DJL/JPL