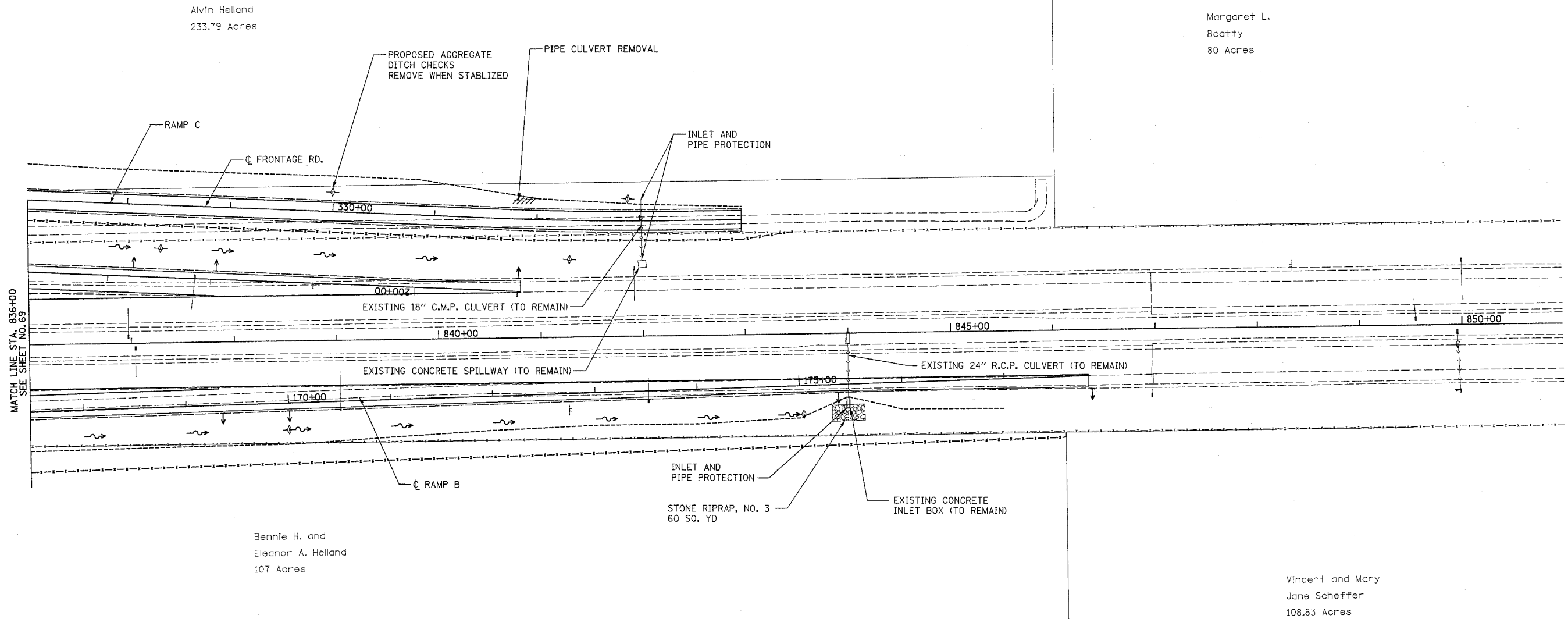


F.A.I. RTE.	SECTION	COUNTY	TOTAL SHEETS	SHEET NO.
80	32-2HBR	GRUNDY	171	70
STA.		TO STA.		
FED. ROAD DIST. NO.		ILLINOIS FED. AID PROJECT		
CONTRACT NO.		66412		



MATCH LINE STA. 836+00
SEE SHEET NO. 69

REVISIONS		ILLINOIS DEPARTMENT OF TRANSPORTATION I-80 (F.A.I. 80) AT SENECA ROAD (F.A.P. 623) GRUNDY COUNTY EROSION CONTROL AND DRAINAGE PLAN RAMP B, RAMP C
NAME	DATE	

SCALE: 1" = 50'
DATE 08/16/04

DRAWN BY NMR/BJG
CHECKED BY DJL/JPL